

4

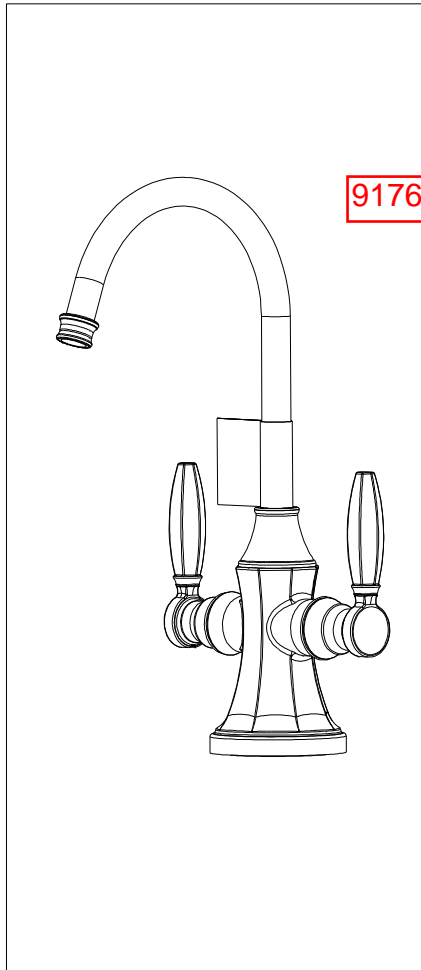
3

2

1

NOTES:

- (N1) 1. FIT / FORM / FUNCTION SHALL FOLLOW PS-E.008.
- 2 APPLY LOCTITE 680.
- 3 CUT O-RING, ITEM 21, TO .20" (SHORTEN BY .13') BEFORE INSTALLING.
- 4 SLIT O-RING, ITEM 19, BEFORE INSTALLING.
- 5 INSTALLATION TORQUE: 8-14 LB-FT.
- (N6) 6. ASSEMBLY SHALL BE WATER TESTED.
- 7 PLACE ITEM 18, 5-035, IN A SEPARATE BAG.
- 8 INSTALLATION TORQUE: 30 LB-FT.
- 9 LUBRICATE SPRING WITH DOW III.
- (N10) 10. REWORK CARTRIDGE ASSY IF THE HANDLE DOES NOT RETURN TO THE "OFF" POSITION AUTOMATICALLY AFTER WATER TESTING.
- 11 APPLY LOCTITE 242.
- 12 APPLY THIN FILM OF DOW CORNING III.



BILL OF MATERIAL (CURRENT LEVEL)

ITEM	PT/ASSY	DESCRIPTION	TYPE	QTY.
1	12282	WATER DISPENSER BODY, HOT & COLD	PART	1
2	11836	RETAINING RING	PART	1
3	12076	WATER DISPENSER BODY CAP	PART	1
4	50713	SPOUT, WATER DISP. (TRAD.)	PART	1
5	12077	ESCUTCHEON	PART	1
6	11733	SHELL, SPOUT, WATER DISP	PART	1
7	50768	RETAINER PLATE	PART	1
8	12949	1-1/8-18 UNEF MOUNTING NIPPLE	PART	1
9	91394	O-RING, #2-132, EPDM, 65-75 DURO	PART	1
10	92016	SCRW, 10-24 X 3/4 SKT HD FLT PT SS	PART	2
11	50068	INSERT, HOSE	PART	3
12	50066	COMPRESSION RING, 1/2	PART	3
13	91100	O-RING, #2-006, EPDM, 65-75 DURO	PART	3
14	91376	TUBE, RED, .250 OD X 4 FT	PART	1
15	91377	TUBE, BLUE, .250 OD X 4 FT	PART	1
16	91378	TUBE, HIGH TEMP, .250 OD X 4 FT	PART	1
17	1-393	1-1/8 18 UNEF MOUNTING KIT	ASSEMBLY	1
18	5-035	COUPLING & INSERT ASM	ASSEMBLY	1
19	91382	O-RING, #2- 012, TEFLON,	PART	1
20	91017	O-RING, #2- 012, EPDM, 65-75 DURO, NSF 61	PART	2
21	91383	O-RING, #2- 014, TEFLON, NSF 61	PART	1
22	98043	TAG LABEL, HOT WATER WARNING	PART	1
23	91023	O-RING, #2- 019, EPDM, 65-75 DURO, NSF 61	PART	1
24	5-061	ADAPTER/CARTRIDGE ASSY	ASSEMBLY	1
25	12151	HANDLE	PART	2
26	92000	SCREW 8 - 32 X 1/8 SS	PART	2
27	1-134	CARTR 3/8 HOT 1/4 TR	PART	1
28	11834	ADAPTER	PART	1
29	92477	SCRW, M4 X 16 SKT FLT HD SS	PART	1

REV D EN-3722 02/08/2019 CG

ZONE	REV	DESCRIPTION	DATE	APPROVED
-	C	EN-3558a	01/01/19	V.V.
-	B	EN-3317	10/16/17	J.A.
-	-	EN-3131	08/29/16	N.S.
-	-	EN-2663	12/18/13	N.S.

COPYRIGHT 2005 BRASSTECH, INC. THESE DRAWINGS AND THE DESIGNS DEPICTED HEREIN ARE THE PROPRIETARY PROPERTY OF BRASSTECH. ANY USE OR REPRODUCTION IS SUBJECT TO THE EXPRESS APPROVAL OF BRASSTECH. UNAUTHORIZED USE IS STRICTLY PROHIBITED. ALL RIGHTS RESERVED.

TESTING	ASSEMBLY	PLATING	POLISHING	MACHINING	TOOLING	FIXTURE #	APPLICATION
-	-	-	-	-	-	-	REMOVE ALL BURRS AND SHARP EDGES

UNITS ARE: INCHES [MM]  
 TOLERANCES ARE:  
 FRACTIONS DECIMALS ANGLES  
 ±1/16" .X ±.1 [2,5] ±1°  
 .XX ±.06 [1,5]  
 (X.XXX) DENOTES CRITICAL DIMS.  
 ALL THREADS ARE CRITICAL  
 DRAWN MANJUNATH 01/01/19  
 CHECKED JINSON 01/01/19  
 APPROVED V.V. 01/01/19

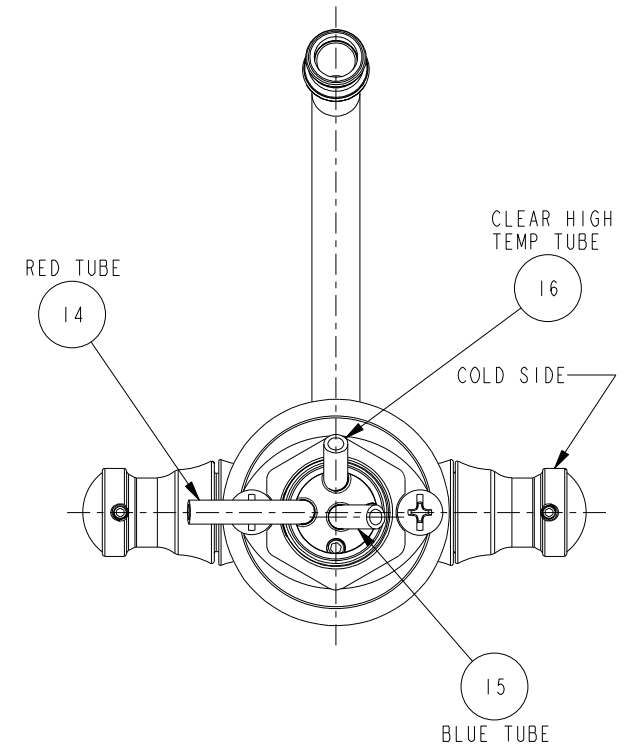
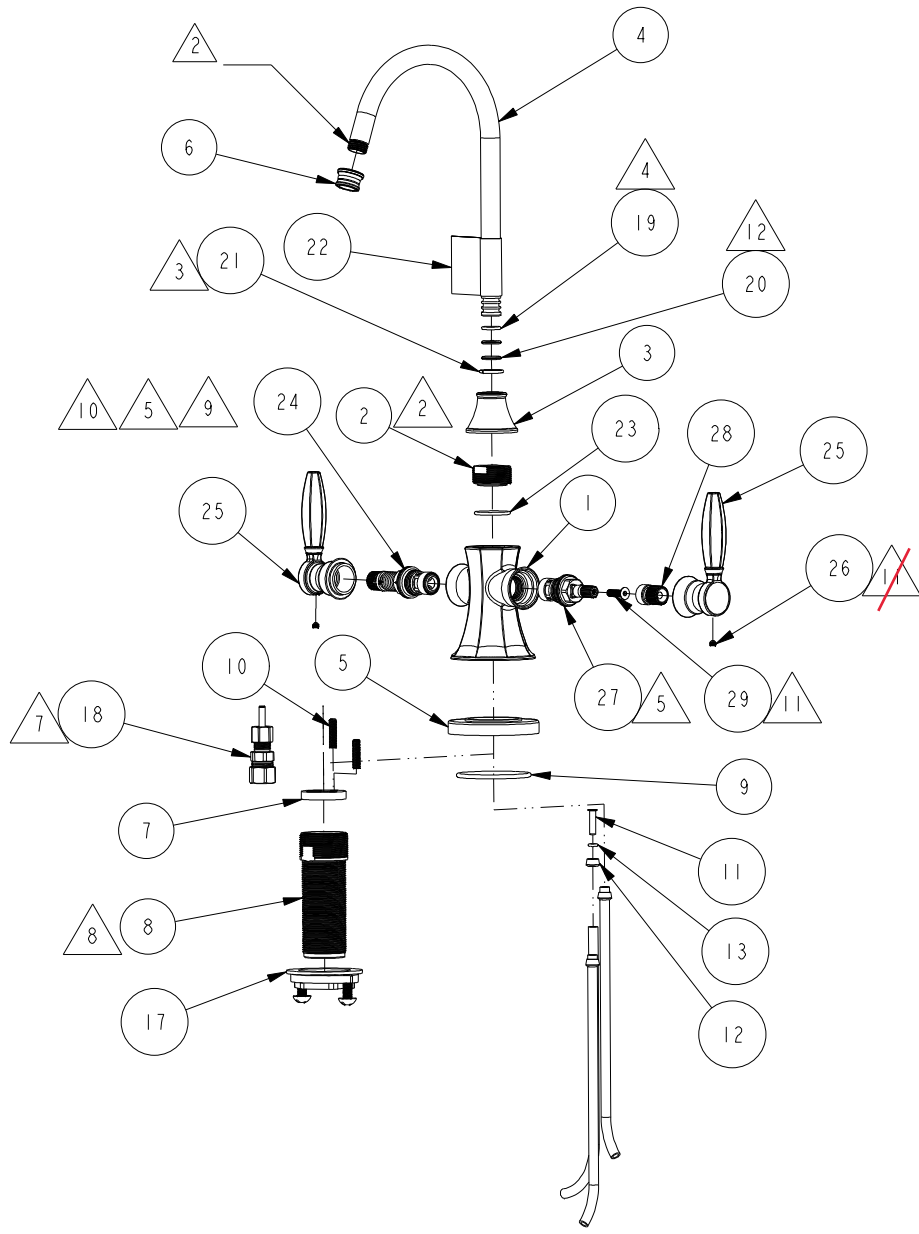
**BRASSTECH** 2001 CARNEGIE AVE. SANTA ANA, CA 92705 (949) 417-5207  
 INCORPORATED  
 METROPOLE HOT & COLD WATER DISPENSER  
 DWG NO. 1200-5603  
 SCALE .300 REF. - SHEET | OF **D**

4

3

2

1



BOTTOM VIEW  
SCALE .500

<b>BRASSTECH</b> INCORPORATED		2001 E. CARNEGIE AVE. SANTA ANA, CA 92705 (949) 417-5207	
DWG NO.	1200-5603	REV	C
SCALE .200	REF. -	SHEET 2	OF 3

