



## MEM Tub spout for wall-mounted installation - Brushed Platinum

13 801 782 Product version from 3/10/2014



- 8-5/8" Projection
- Rectangular aerated stream
- Flange 2-3/8" x 2-3/8"
- 1-1/2" hole diameter
- 1/2" connection
- Water flow rate limited to max. 10.2 gpm

	Brushed Platinum	13 801 782-06
	Chrome	13 801 782-00
	Platinum	13 801 782-08
	Dark Chrome	13 801 782-19
	Brushed Durabrass (23kt Gold)	13 801 782-28
	Brushed Champagne (22kt Gold)	13 801 782-46
	Champagne (22kt Gold)	13 801 782-47
	Brushed Dark Platinum	13 801 782-99

### Required article

Rough-in adapter -

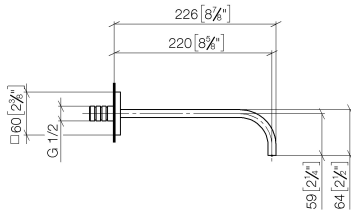
35 080 970-90  
0010



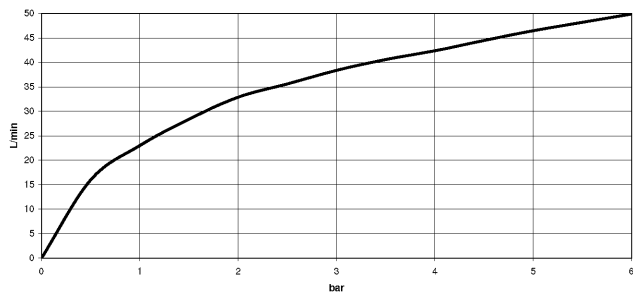
**MEM Tub spout for wall-mounted installation - Brushed Platinum**

13 801 782 Product version from 3/10/2014

mm [inches]



**Flow rate chart**



**Codes & Standards**

ASME A112.18.1

ASME  
A112.18.1/CSA  
B125.1

cUPC

Scottish Water  
Byelaws

UK Water Supply  
Regulations



## MEM Tub spout for wall-mounted installation - Brushed Platinum

---

13 801 782 Product version from 3/10/2014

### Certificates

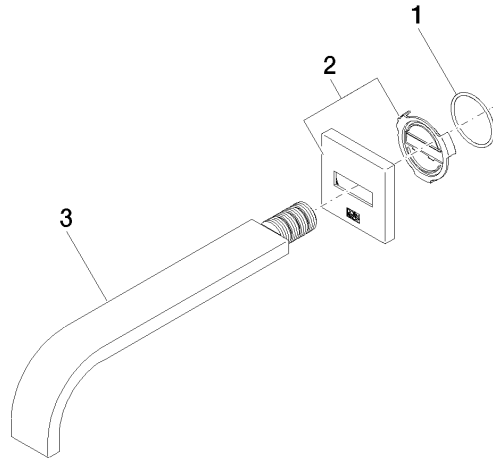
---

WRAS\_2203

IAPMO\_4976

**MEM Tub spout for wall-mounted installation - Brushed Platinum**

13 801 782 Product version from 3/10/2014



**Spare parts list**

Number	Item Number	Designation	Number of units	Lead time
1	09 14 10 111 90	seal	1	2
2	90 27 78 035 00-06	rosette	1	10
3	04 28 22 290 00-06	spout	1	10