

## TARA Tub spout for wall-mounted installation - Chrome

13 801 892 Product version from 4/1/2024



- 7-7/8" Projection
- Round aerator
- Flange diameter 2-1/8"
- 1-1/2" hole diameter
- 1/2" connection
- Water flow rate limited to max. 7.7 gpm

	Chrome	13 801 892-00
	Brushed Platinum	13 801 892-06
	Platinum	13 801 892-08
	Dark Chrome	13 801 892-19
	Brushed Light Gold	13 801 892-27
	Brushed Durabronze (23kt Gold)	13 801 892-28
	Matte Black	13 801 892-33
	Brushed Bronze	13 801 892-42
	Brushed Champagne (22kt Gold)	13 801 892-46
	Champagne (22kt Gold)	13 801 892-47
	Brushed Chrome	13 801 892-93
	Brushed Dark Platinum	13 801 892-99

### Required article

**Rough-in adapter -**

35 080 970-90  
0010

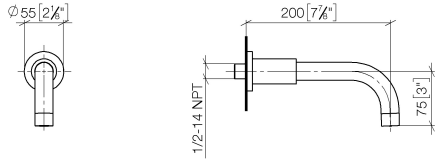




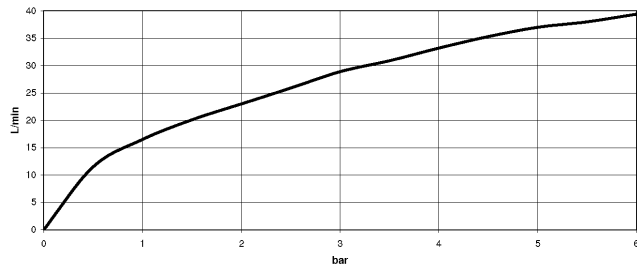
## TARA Tub spout for wall-mounted installation - Chrome

13 801 892 Product version from 4/1/2024

mm [inches]



### Flow rate chart



### Codes & Standards

ASME A112.18.1	ASME A112.18.1/CSA B125.1	cUPC	DIN 4109
ISO 3822	Scottish Water Byelaws	UK Water Supply Regulations	Ü-Zeichen



## TARA Tub spout for wall-mounted installation - Chrome

---

13 801 892 Product version from 4/1/2024

### Certificates

---

LGA\_18

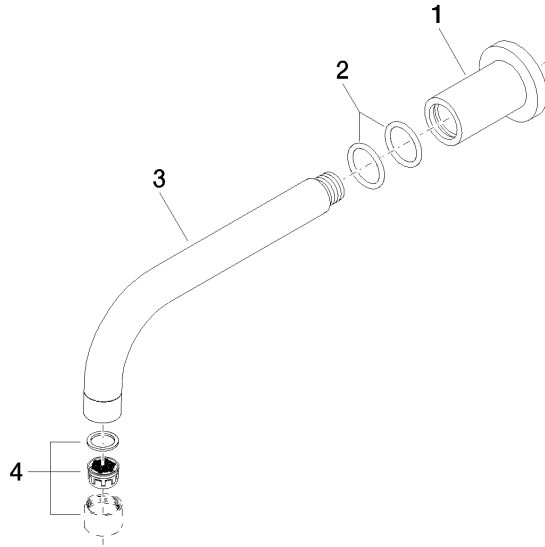
IAPMO\_4976

WRAS\_1811

WRAS\_240602

**TARA Tub spout for wall-mounted installation - Chrome**

13 801 892 Product version from 4/1/2024



**Spare parts list**

Number	Item Number	Designation	Number of units	Lead time
1	09 27 89 009-00	rosette	1	10
2	90 14 10 025 00 90	seal	2	2
3	04 28 22 198 20-00	spout	1	10
4	90 23 01 024 00-00	aerator	1	10