

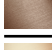



## TARA Bath spout for wall mounting - Brushed Chrome

13 801 892 Product version from 4/1/2024



- 200mm projection
- circular normal flow
- rosette Ø 55 mm
- hole diameter 37 mm
- 1/2" connection
- max. flow 29 l/min at 3 bar flow pressure
- WRAS

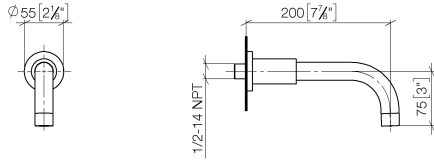
	Brushed Chrome	13 801 892-93
	Chrome	13 801 892-00
	Brushed Platinum	13 801 892-06
	Platinum	13 801 892-08
	Dark Chrome	13 801 892-19
	Brushed Light Gold	13 801 892-27
	Brushed Durabronze (23kt Gold)	13 801 892-28
	Matte Black	13 801 892-33
	Brushed Bronze	13 801 892-42
	Brushed Champagne (22kt Gold)	13 801 892-46
	Champagne (22kt Gold)	13 801 892-47
	Brushed Dark Platinum	13 801 892-99



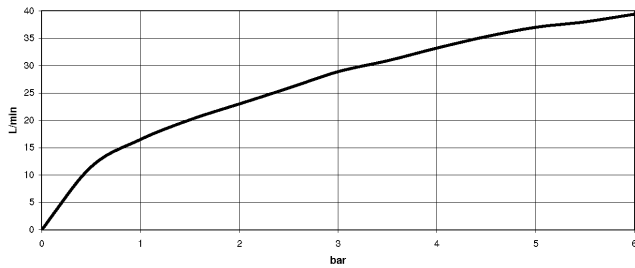
## TARA Bath spout for wall mounting - Brushed Chrome

13 801 892 Product version from 4/1/2024

mm [inches]



### Flow rate chart



### Codes & Standards

ASME A112.18.1

cUPC

DIN 4109

ISO 3822

Scottish Water  
Byelaws

UK Water Supply  
Regulations

Ü-Zeichen



## TARA Bath spout for wall mounting - Brushed Chrome

---

13 801 892 Product version from 4/1/2024

### Certificates

---

LGA\_18

IAPMO\_4976

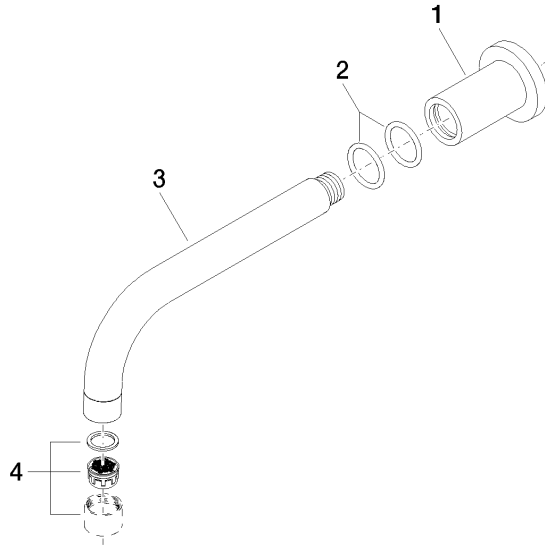
WRAS\_1811

WRAS\_240602

## TARA Bath spout for wall mounting - Brushed Chrome

13 801 892 Product version from 4/1/2024

Parts for other finishes can be found here: [Chrome](#)



### Spare parts list

No.	Item Number	Name	Quantity used	Delivery time
1	09 27 89 009-93	rosette	1	20
2	90 14 10 025 00 90	seal	2	2
3	04 28 22 198 20-93	spout	1	20
4	90 23 01 024 00-93	aerator	1	20