

# 1623BFSTDMA – ACCESSIBLE SHOWERS

inches (mm)

Interior: 60 x 30 x 74 7/8 (1525 x 760 x 1900)

Exterior: 62 x 32 1/4 x 76 7/8 (1575 x 820 x 1955)

Fax on Demand #6042

The 1623BFSTDMA transfer shower features innovative installation design, including an engineered leveled base and improved front threshold. A true time and money saver, our pre-leveled base lets you install directly on a **level** floor. And its front threshold is engineered to keep a constant level without the use of brackets during installation.



## FEATURES

- Massachusetts only
- Pre-leveled base
- Gelcoat surface
- 3/4" (20 mm) skirt
- 1/2" (15 mm) threshold
- 4" simulated smooth tile
- Barrier free design
- Back fixture wall
- Center drain location
- Slip-resistant, textured bottom
- 3-year limited warranty

## OPTIONS

- Grab bars
- Fold-up seat
- Hand-held shower assembly with slide bar
- Pressure balancing mixing valve
- Soap dish
- Curtain rod and/or shower curtain
- Brass drain

## CODE COMPLIANCE

- 521 CMR

\*\*Code compliant when fully equipped and installed according to guidelines.

## AQUATIC ADVANTAGE

- 5 manufacturing facilities
- Private fleet
- Centralized customer service
- Field support
- 24-hour fax-on-demand

## COLOR & TRIM OPTIONS

Stock	Premium
Almond	Black
Biscuit	Mexican Sand
Bone	Sandbar
Linen	
Sterling Silver	
White	

\*\*Additional custom colors available.  
(Contact Customer Service)

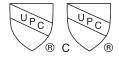


Aquatic products may be specified as Lasco Bathware.

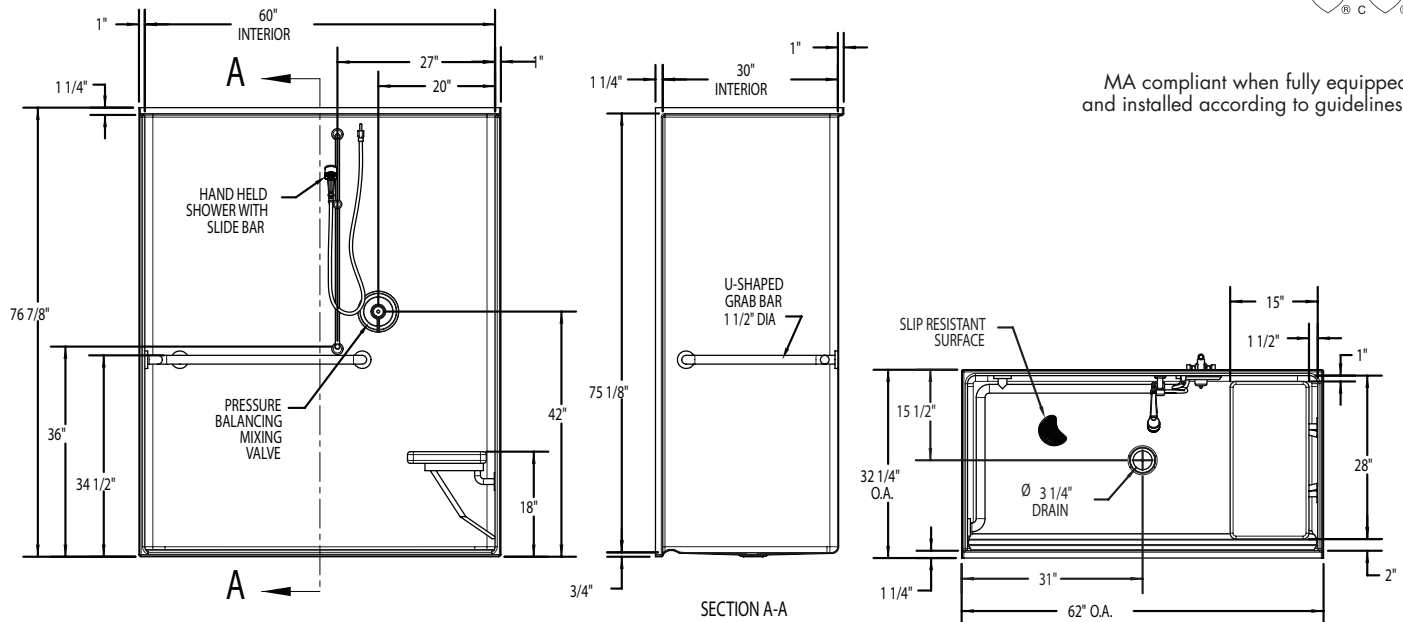


# 1623BFSTDMA

Interior: 60 x 30 x 74 7/8 (1525 x 760 x 1900)  
 Exterior: 62 x 32 1/4 x 76 7/8 (1575 x 820 x 1955)  
 inches (mm)



MA compliant when fully equipped and installed according to guidelines.



**FEATURES** lbs (kg) Dimensional Tolerance ± 3/8". Dimensions needed for site preparation should be measured from the unit. Aquatic assumes no responsibility for preparatory work.

Type and Model #	Material	Wall Finish	Pieces	Drain	Dam/Skirt Height	Net Wt.	Pkg. Wt.
Shower #1623BFSTDMA	Gelcoat	Smooth tile	1	Center	3/4" (20mm) skirt, 1/2" (15mm) threshold	180 (80)	190 (85)

## DIMENSIONS

Specifications	inches (mm)
Width: Overall / Net	62 (1575) / 60 (1525)
Depth: Overall / Net	32 1/4 (820) / 30 (760)
Height: Overall / Net	76 7/8 (1955) / 74 7/8 (1900)
Enclosure Opening:	60 (1525)
Skirt Height:	3/4 (20)
Drain Rough-In (from Back Wall)	15 1/2 (395)
Drain Rough-In (from Side Wall)	31 (785)

## FRAMING DIMENSIONS inches (mm)

Type	D Depth	W Width	H Height	A	B	C
Alcove	32 1/4 (820)	62 1/8 (1580)	-	Box Out	31 (785)	15 1/2 (395)

