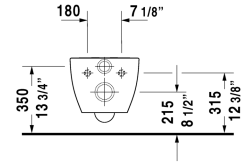
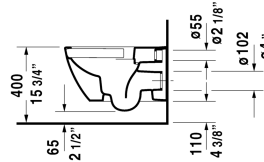
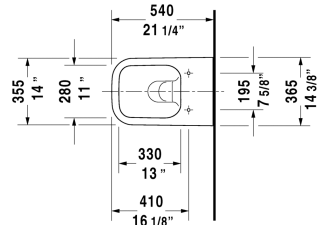


**Happy D.2 Toilet wall-mounted Duravit Rimless®** & #  
 222209..92 / 222209..92 / 222209..92

< 14 3/8" Inch >



Toilet wall-mounted Duravit Rimless®	Dimension	Weight	Order number
rimless, washdown model, Durafix included, cUPC® listed*			
<b>Colors</b>			
00 White 20 HygieneGlaze (an antibacterial ceramic glaze that provides almost indefinite effectiveness) 89 Anthracite/Anthracite Matte			
<b>Variant</b>			
♣ inside color White, outside color White, 1.6/0.8 gpf	14 3/8" x 21 1/4" Inch	59.1 lb	222209..92
♣ inside color White with HygieneGlaze, outside color White, 1.6/0.8 gpf	14 3/8" x 21 1/4" Inch	59.1 lb	222209..92
♣ inside color Anthracite, outside color Anthracite Matte, 1.6/0.8 gpf	14 3/8" x 21 1/4" Inch	59.1 lb	222209..92
<b>Infobox</b>			
* Complies with following standards: ASME A112.19.2/CSA B45.1 and ASME A112.19.14, Durafix for concealed installation is included, In-wall tank & carrier and actuator plate required for installation / Refer to page XXX, Wall-mounted toilet is ADA compliant, when installed with a seat height of 17" - 19" from the finished floor			
Sanitary ceramics with the special WonderGliss surface finish will remain clean and attractive-looking for a long time to come. When ordering WonderGliss please add a "1" as eleventh digit to the model number.			
<b>Accessory for ceramics</b>			
Toilet seat and cover removable, hinges stainless steel, with slow close		6 lb	006459
Toilet seat and cover removable, hinges stainless steel, without slow close		6 lb	006451
Sigma 01 flush plate, dual flush for toilets, White	9 5/8" x 6 1/2" Inch		115770
Geberit in-wall tank and carrier for toilets	19 3/4" x 3 1/8" Inch	37.5 lb	111798
Geberit in-wall tank and carrier for toilets	19 3/4" x 5 1/2" Inch	40.8 lb	111335
Noise reduction gasket for wall-mounted toilet		0.7 lb	005064

**Happy D.2 Toilet wall-mounted Duravit Rimless® ♂ #**  
222209..92 / 222209..92 / 222209..92

---

|< 14 3/8" Inch >|

*All drawings contain the necessary measurements which are subject to standard tolerances. They are stated in inch & mm and are non-binding. Exact measurements, in particular for customized installation scenarios, can only be taken from the finished ceramic piece.*