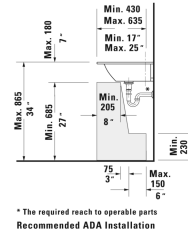
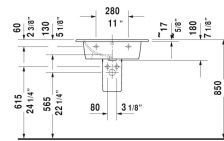
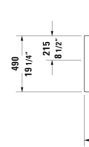
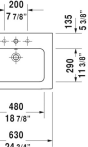
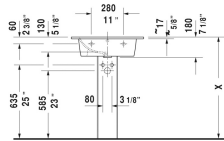
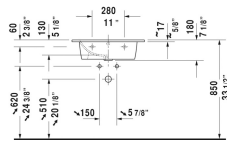


ME by Starck Furniture washbasin ♂ # 233663..00 / 233663..30 / 233663..58 / 233663..60 / 233663..00 / 233663..30 / 233663..58 / 233663..60

< 24 3/4" Inch >



\* The required reach to operable parts  
Recommended ADA Installation

Furniture washbasin	Dimension	Weight	Order number
with overflow, with faucet deck, hardware included, wall-mounted, cUPC® listed*, 24 3/4" Inch			
<b>Colors</b>			
00 White 32 White Satin Matte			
<b>Variant</b>			
●	24 3/4" x 19 1/4" Inch	38.8 lb	233663..00
● ● ●	24 3/4" x 19 1/4" Inch	38.8 lb	233663..30
● ●	24 3/4" x 19 1/4" Inch	38.8 lb	233663..58
⊗	24 3/4" x 19 1/4" Inch	38.8 lb	233663..60
●	24 3/4" x 19 1/4" Inch	38.8 lb	233663..00
● ● ●	24 3/4" x 19 1/4" Inch	38.8 lb	233663..30
● ●	24 3/4" x 19 1/4" Inch	38.8 lb	233663..58
⊗	24 3/4" x 19 1/4" Inch	38.8 lb	233663..60
<b>Infobox</b>			
* Complies with following standards: ASME A112.19.2/CSA B45.1, Washbasin is not ADA compliant in combination with pedestal, siphon cover or metal console			
Sanitary ceramics with the special WonderGliss surface finish will remain clean and attractive-looking for a long time to come. When ordering WonderGliss please add a "1" as eleventh digit to the model number.			
Space-saving siphon	1 1/4" Inch	0.9 lb	005076
<b>Suitable products</b>			

**ME by Starck Furniture washbasin** # 233663..00 / 233663..30  
 / 233663..58 / 233663..60 / 233663..00 / 233663..30 /  
 233663..58 / 233663..60

| < 24 3/4" Inch > |

Vanity unit wall-mounted 1 pull-out compartment, for ME by Starck # 233663, 24 3/8" x 19" Inch	24 3/8" x 19" Inch	LC6140
Vanity unit wall-mounted 2 drawers, upper drawer including cut-out for siphon and siphon cover, for ME by Starck # 233663, 24 3/8" x 19" Inch	24 3/8" x 19" Inch	LC6240
Vanity unit floorstanding 2 pull-out compartments, upper drawer including cut-out for siphon and siphon cover, for ME by Starck # 233663, 24 3/8" x 19" Inch	24 3/8" x 19" Inch	LC6625
Pedestal for # 233565, 233560, 233555, 233613, 233612, 233610, 233683, 233663, 236112, 233653, 6 7/8" x 8 1/4" Inch	6 7/8" x 8 1/4" Inch	085839
Siphon cover for # 233565, 233560, 233555, 233613, 233612, 233610, 233683, 233663, 236112, 233653, 6 3/4" x 11 3/4" Inch	6 3/4" x 11 3/4" Inch	085840
Vanity unit wall-mounted 1 pull-out compartment, for ME by Starck # 233663, 23 5/8" x 18 3/4" Inch	23 5/8" x 18 3/4" Inch	KT6418
Vanity unit wall-mounted 2 drawers, upper drawer including cut-out for siphon and siphon cover, for ME by Starck # 233663, 23 5/8" x 18 3/4" Inch	23 5/8" x 18 3/4" Inch	KT6428
Vanity unit wall-mounted 1 pull-out compartment, for ME by Starck # 233663, 24 3/8" x 18 7/8" Inch	24 3/8" x 18 7/8" Inch	BR4001
Vanity unit wall-mounted 2 drawers, upper drawer including cut-out for siphon and siphon cover, for ME by Starck # 233663, 24 3/8" x 18 7/8" Inch	24 3/8" x 18 7/8" Inch	BR4101
Vanity unit floorstanding 2 pull-out compartments, upper drawer including cut-out for siphon and siphon cover, for ME by Starck # 233663, 24 3/8" x 18 7/8" Inch	24 3/8" x 18 7/8" Inch	BR4401
Vanity unit wall-mounted 1 pull-out compartment, for ME by Starck # 233663, 24" x 18 7/8" Inch	24" x 18 7/8" Inch	XS4071
Vanity unit wall-mounted 2 drawers, upper drawer including cut-out for siphon and siphon cover, for ME by Starck # 233663, 24" x 18 7/8" Inch	24" x 18 7/8" Inch	XS4171
Vanity unit floorstanding 2 pull-out compartments, upper drawer including cut-out for siphon and siphon cover, integrated legs with height adjustment, for ME by Starck # 233663, 24" x 18 7/8" Inch	24" x 18 7/8" Inch	XS4445
Vanity unit wall-mounted 1 pull-out compartment, for ME by Starck # 233663, 24" x 18 7/8" Inch	24" x 18 7/8" Inch	XV4025
Vanity unit wall-mounted 2 drawers, upper drawer including cut-out for siphon and siphon cover, for ME by Starck # 233663, 24" x 18 7/8" Inch	24" x 18 7/8" Inch	XV4125
Vanity unit floorstanding 2 pull-out compartments, upper drawer including cut-out for siphon and siphon cover, for ME by Starck # 233663, 24" x 18 7/8" Inch	24" x 18 7/8" Inch	XV4481

*All drawings contain the necessary measurements which are subject to standard tolerances. They are stated in inch & mm and are non-binding. Exact measurements, in particular for customized installation scenarios, can only be taken from the finished ceramic piece.*