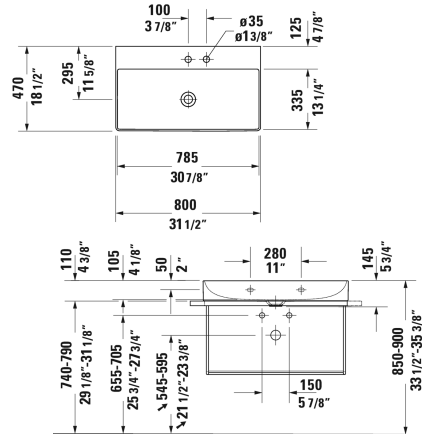
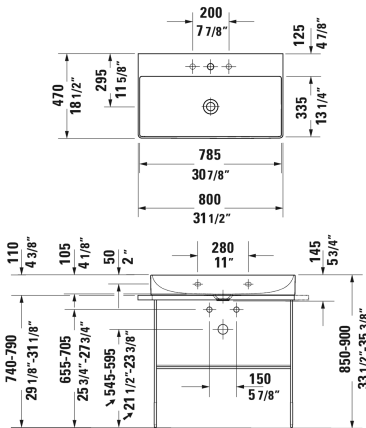
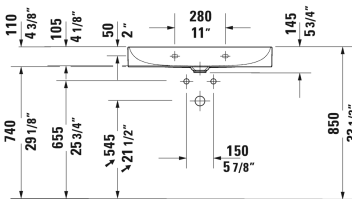


DuraSquare Furniture washbasin # 2353800040 / 2353800041 / 2353800044 / 2353800070

< 31 1/2" Inch >



Furniture washbasin	Dimension	Weight	Order number
without overflow, with faucet deck, ceramic covered slotted waste included, underside fully glazed, 31 1/2" Inch			
<b>Colors</b>			
00 White			
<b>Variant</b>			
● ●	31 1/2" x 18 1/2" Inch	41 lb	2353800040
●	31 1/2" x 18 1/2" Inch	41 lb	2353800041
● ● ●	31 1/2" x 18 1/2" Inch	41 lb	2353800044
☒	31 1/2" x 18 1/2" Inch	41 lb	2353800070
<b>Infobox</b>			
Made of DuraCeram, For glass inserts matching to furniture lacquer finishes, please see page XXX, Metal console: Towel rail can be mounted right or left			
Sanitary ceramics with the special WonderGliss surface finish will remain clean and attractive-looking for a long time to come. When ordering WonderGliss please add a "1" as eleventh digit to the model number.			
Towel rail square tube 1/2", Chrome, for washbasin # 235380, 234880, 234980	29 3/8" Inch	1.3 lb	003121
Design Siphon		3.3 lb	005036
<b>Suitable products</b>			

**DuraSquare Furniture washbasin # 2353800040 / 2353800041 / 2353800044 / 2353800070**

|< 31 1/2" Inch >|

Metal console floorstanding ** height adjustable +2", hardware included, for washbasin # 235380, 234880, 234980, towel rail right or left, reversible, 34" x 17 3/4" Inch	34" x 17 3/4" Inch	003111
Metal console wall-mounted ** hardware included, for washbasin # 235380, 234880, 234980, towel rail right or left, reversible, 34" x 17 3/4" Inch	34" x 17 3/4" Inch	003112
Glass inserts safety glass, for metal console # 003111, 003112, 30 3/8" x 15" Inch	30 3/8" x 15" Inch	009967
Vanity unit wall-mounted 1 pull-out compartment, for DuraSquare # 235380, 234880, 234980, 30 7/8" x 18 1/8" Inch	30 7/8" x 18 1/8" Inch	XS4062
Vanity unit wall-mounted 2 drawers, upper drawer including cut-out for siphon and siphon cover, 30 7/8" x 18 1/8" Inch	30 7/8" x 18 1/8" Inch	XS4162
Vanity unit floorstanding 2 pull-out compartments, integrated legs with height adjustment, 30 7/8" x 18 1/8" Inch	30 7/8" x 18 1/8" Inch	XS4443

*All drawings contain the necessary measurements which are subject to standard tolerances. They are stated in inch & mm and are non-binding. Exact measurements, in particular for customized installation scenarios, can only be taken from the finished ceramic piece.*