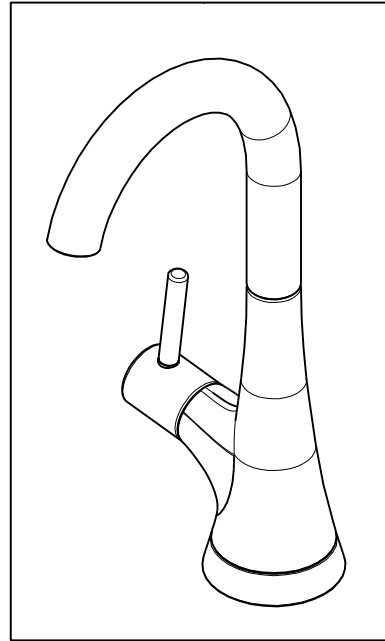


NOTES:

- (N1) 1. FIT / FORM / FUNCTION SHALL FOLLOW PS-E.008.
- 2 APPLY LOCTITE 680.
- 3 CUT AND SHORTEN O-RING BY .13" TO .20" IN LENGTH BEFORE INSTALLING.
- 4 SLIT O-RING BEFORE INSTALLING.
- 5 APPLY LOCTITE 242.
- (N6) 6 CONNECT WHITE AND RED TUBINGS TOGETHER AND WATER TEST WHOLE UNIT.
- 7 BAG 5-035 IN A SEPARATE BAG.
- (N8) 8 REWORK CARTRIDGE ASSY IF THE HANDLE DOES NOT RETURN TO THE 'OFF' POSITION AUTOMATICALLY AFTER WATER TESTING.
- 9 INSTALLATION TORQUE: 8-14 LB-FT.
- 10 INSTALLATION TORQUE: 30 LB-FT.
- 11 LUBRICATE SPRING WITH DOW CORNING III SILICONE COMPOUND.
- 12 PRE-CRIMPED THESE PARTS TOGETHER. SEE INSTALLATION INSTRUCTION.
- 13 APPLY LIGHT FILM OF DOW CORNING III SILICONE COMPOUND.



BILL OF MATERIAL (CURRENT LEVEL)

ITEM	PT/ASSY	DESCRIPTION	TYPE	QTY.
1	1-393	1-1/8 18 UNEF MOUNTING KIT	ASSEMBLY	1
2	5-035	COUPLING & INSERT ASM	ASSEMBLY	1
3	5-061	ADAPTER/CARTRIDGE ASSY	ASSEMBLY	1
4	11821	BODY, WATER DISP, VESSA (HOT)	PART	1
5	11822	SPOUT	PART	1
6	11823	HANDLE	PART	1
7	11824	LEVER, HANDLE	PART	1
8	11825	ADAPTER - VESSA WATER DISPENSER	PART	1
9	11832	RETAINER PLATE	PART	1
10	12949	1-1/8-18 UNEF MOUNTING NIPPLE	PART	1
11	50066	COMPRESSION RING, 1/2	PART	3
12	50068	INSERT, HOSE	PART	3
13	91018	O-RING, #2- 013, EPDM, 65-75 DURO, NSF-61	PART	4
14	91100	O-RING, #2-006, EPDM, 65-75 DURO	PART	3
15	91376	TUBE, RED, .250 OD X 4 FT	PART	1
16	91377	TUBE, BLUE, .250 OD X 4 FT	PART	1
17	91378	TUBE, HIGH TEMP, .250 OD X 4 FT	PART	1
18	91383	O-RING, #2- 014, TEFLON, NSF 61	PART	1
19	91554	RED IDENTIFIER	PART	1
20	91767	O-RING, #2-128, 50 DURO	PART	1
21	92016	SCRW, 10-24 X 3/4 SKT HD FLT PT SS	PART	2
22	92486	SCRW, 8-32 X 1/2 SKT HD CUP PT SS	PART	1

ZONE	REV	DESCRIPTION	DATE	APPROVED
-	H	EN-3722	02/08/19	C.G.
-	G	EN-3558a	01/02/19	V.V.
-	F	EN-3312	05/12/17	J.A.
-	E	EN-2601	9/16/13	-
-	D	EN-2528	5/08/13	-
-	C	EN-2157	06/28/12	-
-	B	EN-2128	04/05/12	-
-	A	EN-1941	01/31/12	-
-	-	EN-1552-4	02/01/11	-

COPYRIGHT 2005 BRASSTECH, INC. THESE DRAWINGS AND THE DESIGNS DEPICTED HEREIN ARE THE PROPRIETARY PROPERTY OF BRASSTECH. ANY USE OR REPRODUCTION IS SUBJECT TO THE EXPRESS APPROVAL OF BRASSTECH. UNAUTHORIZED USE IS STRICTLY PROHIBITED. ALL RIGHTS RESERVED.

TESTING	-	-	-
ASSEMBLY	-	-	-
PLATING	-	-	-
POLISHING	-	NEXT ASSY	USED ON
MACHINING	-	APPLICATION	
TOOLING FIXTURE #	REMOVE ALL BURRS AND SHARP EDGES		

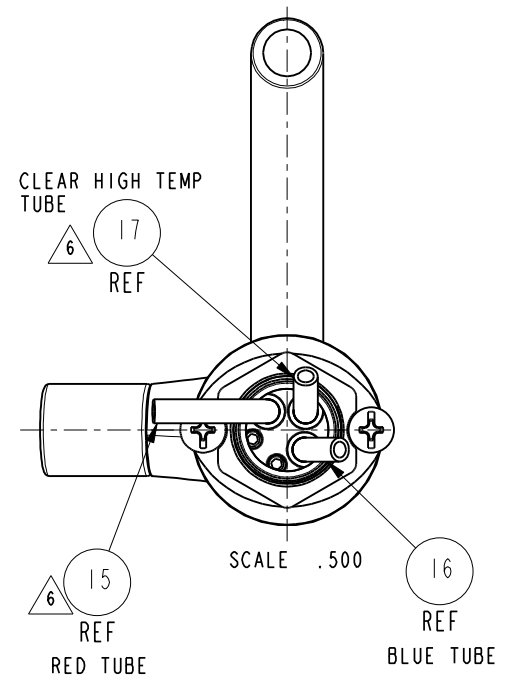
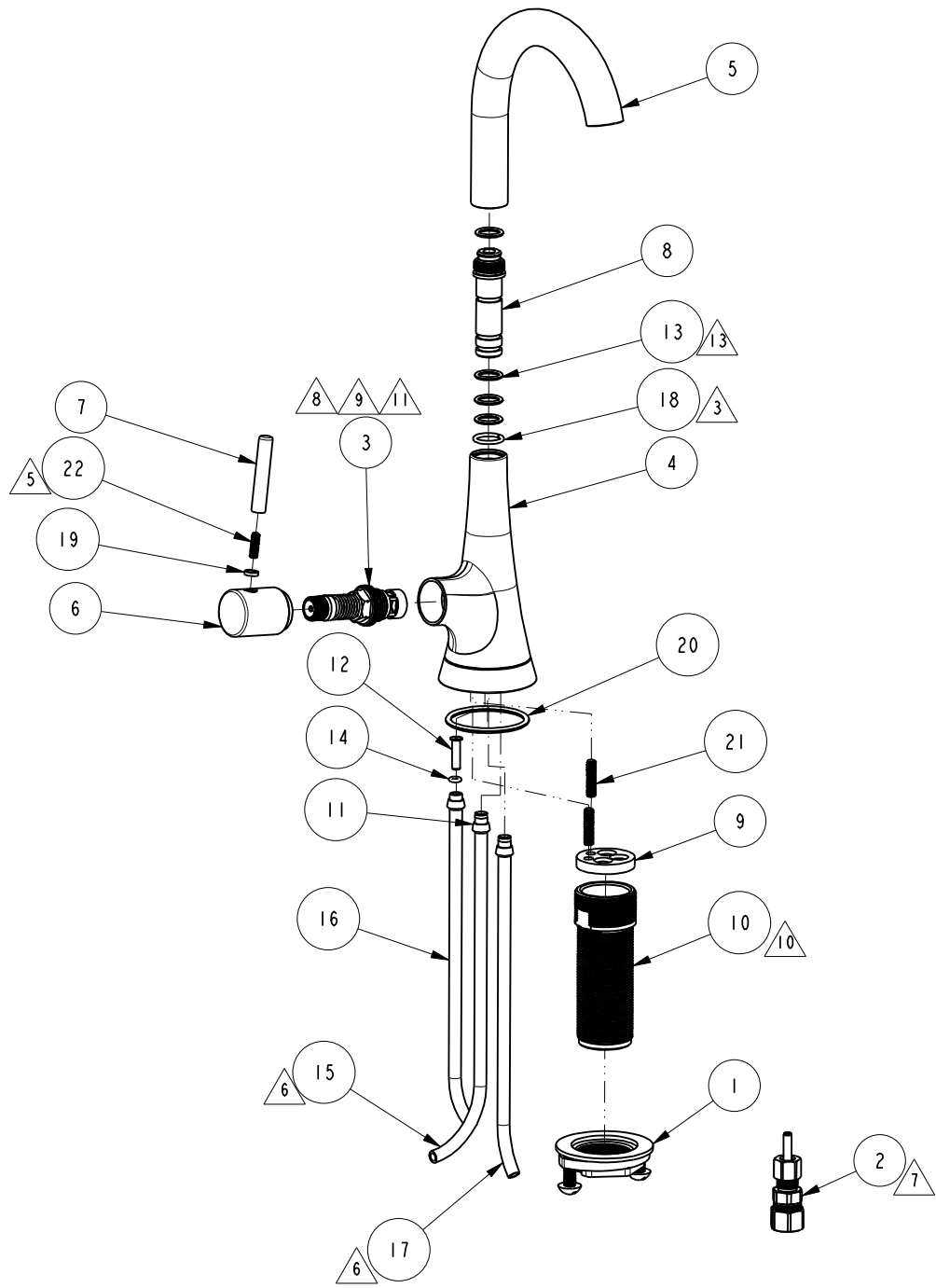
UNITS ARE: INCHES [MM]		
TOLERANCES ARE:		
FRACTIONS DECIMALS	ANGLES	
±1/16"	.X ±.1 [2,5]	±1°
	.XX ±.06 [1,5]	
(X.XXX) DENOTES CRITICAL DIMS. ALL THREADS ARE CRITICAL		
DRAWN	JINSON	02/08/19
CHECKED	C.G.	02/08/19
APPROVED	C.G.	02/08/19

BRASSTECH 2001 CARNEGIE AVE. SANTA ANA, CA 92705 (949) 417-5207
INCORPORATED

VESPERA HOT WATER DISPENSER

DWG NO. **2500-5613** REV **H**

SCALE .375 REF. - SHEET 1 OF 3



BRASSTECH		2001 E. CARNEGIE AVE. SANTA ANA, CA 92705 (949) 417-5207	
DWG NO.	2500-5613	REV	H
SCALE .275	REF. -	SHEET 2	OF 3

