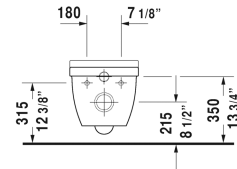
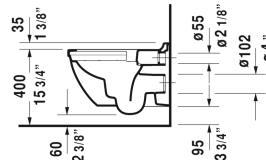
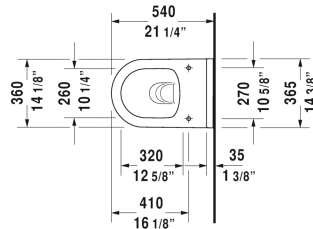


Starck 3 Toilet wall-mounted Duravit Rimless® ♿ # 252709..92 / 252709..92

< 14 1/8" Inch >



Toilet wall-mounted Duravit Rimless®	Dimension	Weight	Order number
rimless, washdown model, Durafix included, cUPC® listed*			
Colors			
00 White 20 HygieneGlaze (an antibacterial ceramic glaze that provides almost indefinite effectiveness)			
Variant			
● 1.6/0.8 gpf	14 1/8" x 21 1/4" Inch	59.5 lb	252709..92
● 1.6/0.8 gpf	14 1/8" x 21 1/4" Inch	59.5 lb	252709..92
Infobox			
Durafix for concealed installation is included, * Complies with following standards: ASME A112.19.2/CSA B45.1 and ASME A112.19.14, In-wall tank & carrier and actuator plate required for installation / Refer to page XXX, Wall-mounted toilet is ADA compliant, when installed with a seat height of 17" - 19" from the finished floor, Not available with WonderGliss			
Noise reduction gasket for wall-mounted toilet		0.7 lb	005020
Suitable products			
Toilet seat and cover hinges stainless steel, without slow close,			006381
Toilet seat and cover hinges stainless steel, removable, with slow close,			006389

All drawings contain the necessary measurements which are subject to standard tolerances. They are stated in inch & mm and are non-binding. Exact measurements, in particular for customized installation scenarios, can only be taken from the finished ceramic piece.