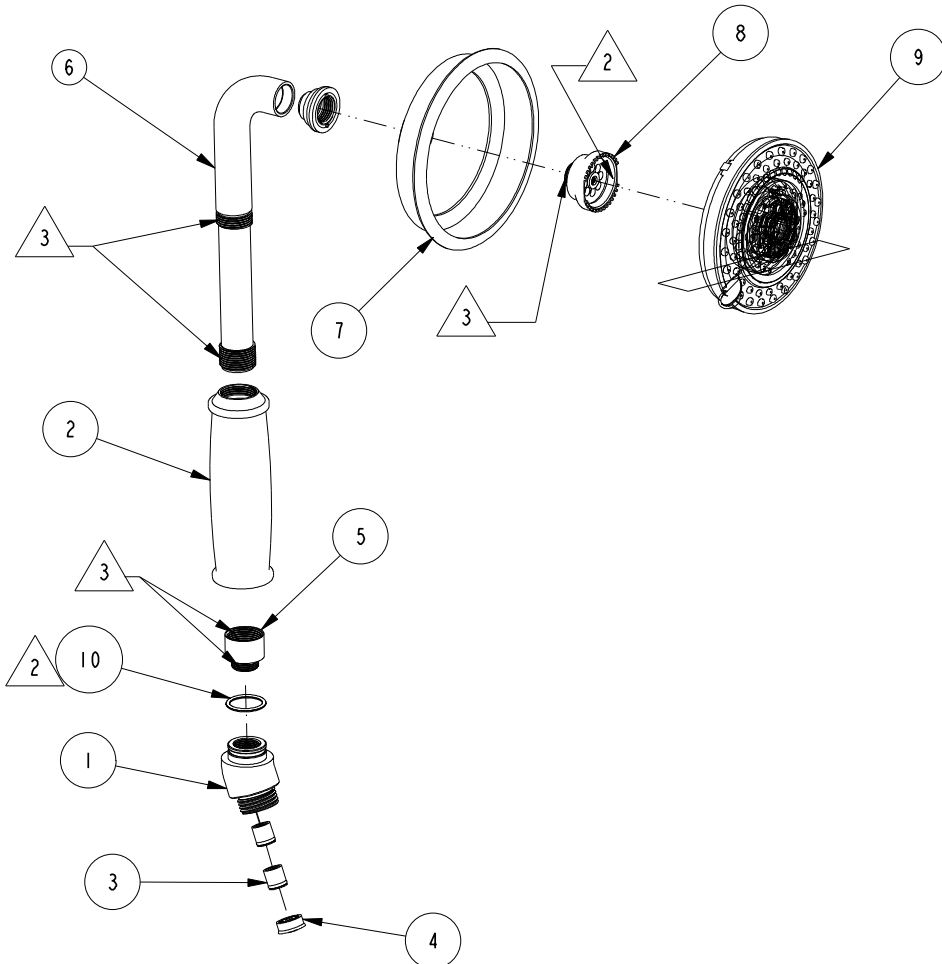


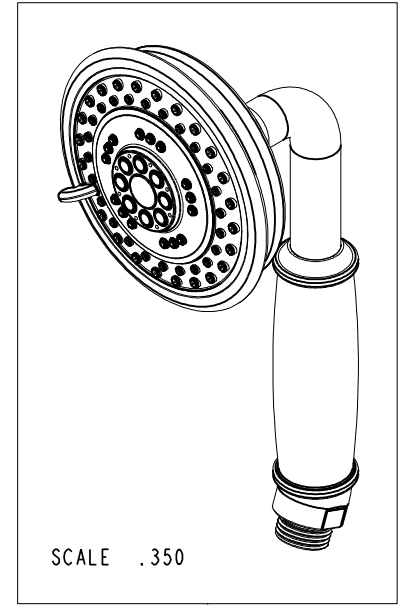
NOTES:

- (NI) 1. FIT / FORM / FUNCTION SHALL FOLLOW PS-E.008.
- 2. APPLY LIGHT FILM OF DOW CORNING III.
- 3. APPLY ADHESIVE LOCTITE 680.



BILL OF MATERIAL (CURRENT LEVEL)

ITEM	PT/ASSY	DESCRIPTION	TYPE	QTY.
1	11562	HAND SPRAY ELBOW END NUT	PART	1
2	11373	SLEEVE	PART	1
3	5-050	CHECK VALVE, NEOPERL DW10, WHITE	PART	2
4	12832	FLOW REGULATOR, 1.8 GPM MAX	PART	1
5	92268	HAND SHOWER ADAPTER	PART	1
6	2-597	TUBE ASSY	ASSEMBLY	1
7	80096	SHOWER HEAD SHELL	PART	1
8	50784	SHOWER HEAD ADAPTER	PART	1
9	8-083	SHOWER ENGINE	PART	1
10	91021	O-RING, #2- 017, EPDM, 65-75 DURO, NSF 61	PART	1



-	E	EN-3553	03/22/18	V. V.
-	D	EN-3410	01/01/18	C. G.
-	C	EN-2768	06/19/14	-
-	B	EN-1668	04/05/11	-
-	A	EN-1265	10/22/09	-
-	-	ECN-0940	02/11/08	-
ZONE	REV	DESCRIPTION	DATE	APPROVED

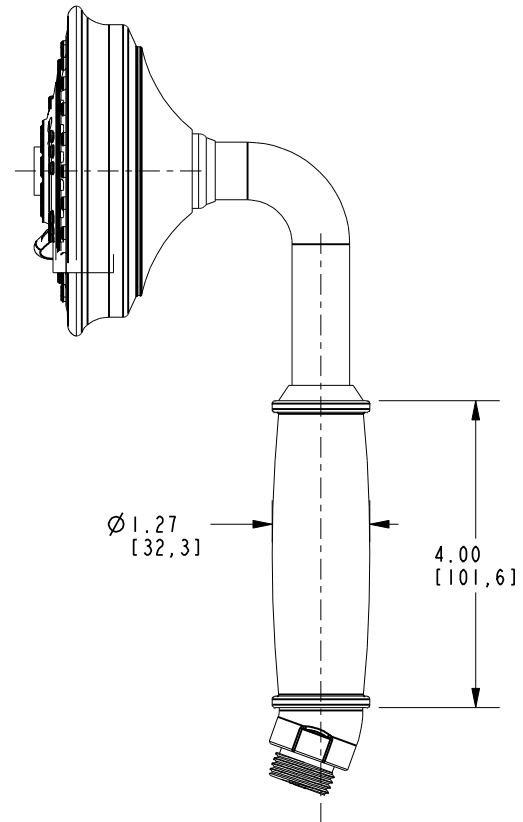
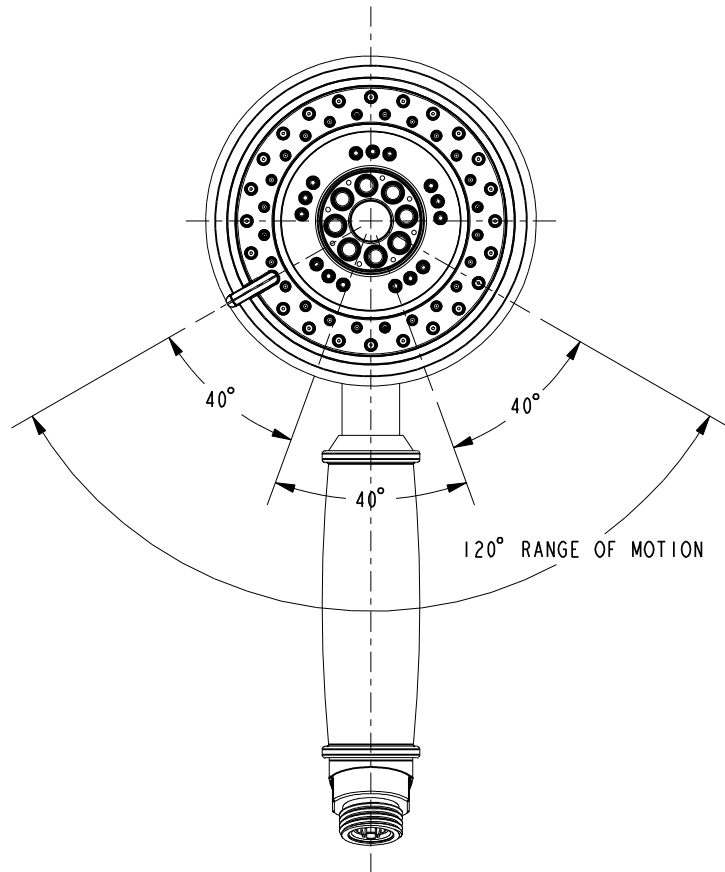
COPYRIGHT 2005 BRASSTECH, INC. THESE DRAWINGS AND THE DESIGNS DEPICTED HEREIN ARE THE PROPRIETARY PROPERTY OF BRASSTECH. ANY USE OR REPRODUCTION IS SUBJECT TO THE EXPRESS APPROVAL OF BRASSTECH. UNAUTHORIZED USE IS STRICTLY PROHIBITED. ALL RIGHTS RESERVED.

TESTING	-	-	-
ASSEMBLY	-	-	-
PLATING	-	-	-
POLISHING	-	NEXT ASSY	USED ON
MACHINING	-	APPLICATION	
TOOLING FIXTURE #	REMOVE ALL BURRS AND SHARP EDGES		

UNITS ARE: INCHES [MM]			
TOLERANCES ARE:			
FRACTIONS	DECIMALS	ANGLES	
±1/16"	.X ±.1 [2.5]	±1°	
	.XX ±.06 [1.5]		
(X.XXX) DENOTES CRITICAL DIMS. ALL THREADS ARE CRITICAL			
DRAWN	JINSON	01/01/18	
CHECKED	C. G.	01/01/18	
APPROVED	C. G.	01/01/18	

BRASSTECH		2001 CARNEGIE AVE. SANTA ANA, CA 92705 (949) 417-5207	
INCORPORATED			
HAND SHOWER - TRADITIONAL			
DWG NO. 281-1			REV E
SCALE .250	REF. -	SHEET 1 OF 2	

NOTE:
ASSEMBLE ENGINE IN THIS POSITION.



BRASSTECH INCORPORATED		2001 E. CARNEGIE AVE. SANTA ANA, CA 92705 (949) 417-5207
DWG NO.	281-1	REV E
SCALE .400	REF. -	SHEET 2 OF 2