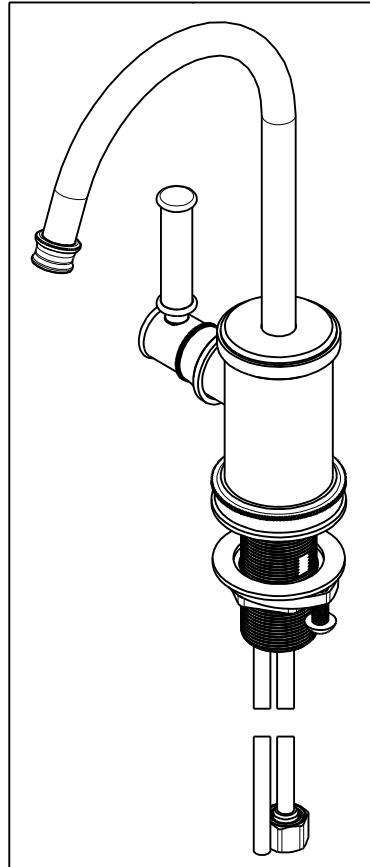


NOTES:

- (N1) 1. FIT / FORM / FUNCTION SHALL FOLLOW PS-E.008.
- 2. CUT AND SHORTEN O-RING BY .13" TO .20" IN LENGTH BEFORE INSTALLING.
- 3. SLIT O-RING BEFORE INSTALLING.
- 4. APPLY LOCTITE 242.
- (N5) 5. CONNECT WHITE AND RED TUBINGS TOGETHER AND WATER TEST WHOLE UNIT.
- 6. BAG 5-035 IN A SEPARATE BAG.
- (N7) 7. REWORK CARTRIDGE ASSY IF THE HANDLE DOES NOT RETURN TO THE "OFF" POSITION AUTOMATICALLY AFTER WATER TESTING.
- 8. INSTALLATION TORQUE: 8-14 LB-FT.
- 9. INSTALLATION TORQUE: 78 LB-IN +/- 6 LB-IN.
- 10. LUBRICATE SPRING WITH DOW CORNING III.
- 11. INSTALLATION TORQUE: 10-14 LB-IN.
- 12. APPLY THIN FILM OF DOW CORNING III.
- 13. APPLY LOCTITE 680.



BILL OF MATERIAL (CURRENT LEVEL)

ITEM	PT/ASSY	DESCRIPTION	TYPE	QTY.
1	13286	BODY	PART	1
2	12513	BODY CAP	PART	1
3	91023	O-RING, #2- 019, EPDM, 65-75 DURO, NSF 61	PART	1
4	50713	SPOUT, WATER DISP. (TRAD.)	PART	1
5	11733	SHELL, SPOUT, WATER DISP	PART	1
6	91383	O-RING, #2- 014, TEFLON, NSF 61	PART	1
7	91382	O-RING, #2- 012, TEFLON,	PART	1
8	91017	O-RING, #2- 012, EPDM, 65-75 DURO, NSF 61	PART	2
9	50714	WATER DISP. CAR.T HOLDER	PART	1
10	5-061	ADAPTER/CARTRIDGE ASSY	ASSEMBLY	1
11	12512	BONNET	PART	1
12	12515	HANDLE HUB	PART	1
13	92192	SCRW, 10-32 X 5/8 SKT HD CUP PT SS	PART	1
14	91553	RED IDENTIFIER	PART	1
15	12514	LEVER HANDLE	PART	1
16	12511	ESCUTCHEON	PART	1
17	91768	O-RING, #2-130, EP, 50 DURO - GREY	PART	1
18	1-431	RED SUPPLY LINE	ASSEMBLY	1
19	1-433	GREY SUPPLY LINE	ASSEMBLY	1
20	1-432	BLUE SUPPLY LINE	ASSEMBLY	1
21	13070	RETAINER PLATE	PART	1
22	92016	SCRW, 10-24 X 3/4 SKT HD FLT PT SS	PART	1
23	13289	NIPPLE	PART	1
24	1-393	1-1/8 18 UNEF MOUNTING KIT	ASSEMBLY	1
25	5-035	COUPLING & INSERT ASM	ASSEMBLY	1
26	98043	TAG LABEL, HOT WATER WARNING	PART	1
27	91424	WSHR, .81 ID X .93 OD X .045 THK, FLT, PLST	PART	1

ZONE	REV	DESCRIPTION	DATE	APPROVED
-	F	EN-3634A	11/26/19	C.G.
-	E	EN-3941	08/28/19	C.G.
-	D	EN-3862	05/07/19	C.G.
-	C	EN-3722	02/08/19	C.G.
-	B	EN-3558a	01/02/19	V.V.
-	A	EN-3293	3/31/17	J.A.
-	-	EN-2980	09/29/16	J.A.

COPYRIGHT 2005 BRASSTECH, INC. THESE DRAWINGS AND THE DESIGNS DEPICTED HEREIN ARE THE PROPRIETARY PROPERTY OF BRASSTECH. ANY USE OR REPRODUCTION IS SUBJECT TO THE EXPRESS APPROVAL OF BRASSTECH. UNAUTHORIZED USE IS STRICTLY PROHIBITED. ALL RIGHTS RESERVED.

TESTING	-	-	-
ASSEMBLY	-	-	-
PLATING	-	-	-
POLISHING	-	NEXT ASSY	USED ON
MACHINING	-	APPLICATION	
TOOLING FIXTURE #	REMOVE ALL BURRS AND SHARP EDGES		

UNITS ARE: INCHES [MM]
TOLERANCES ARE:
FRACTIONS DECIMALS ANGLES
±1/16" .X ±.1 [2,5] ±1°
.XX ±.06 [1,5]

(X.XXX) DENOTES CRITICAL DIMS.
ALL THREADS ARE CRITICAL

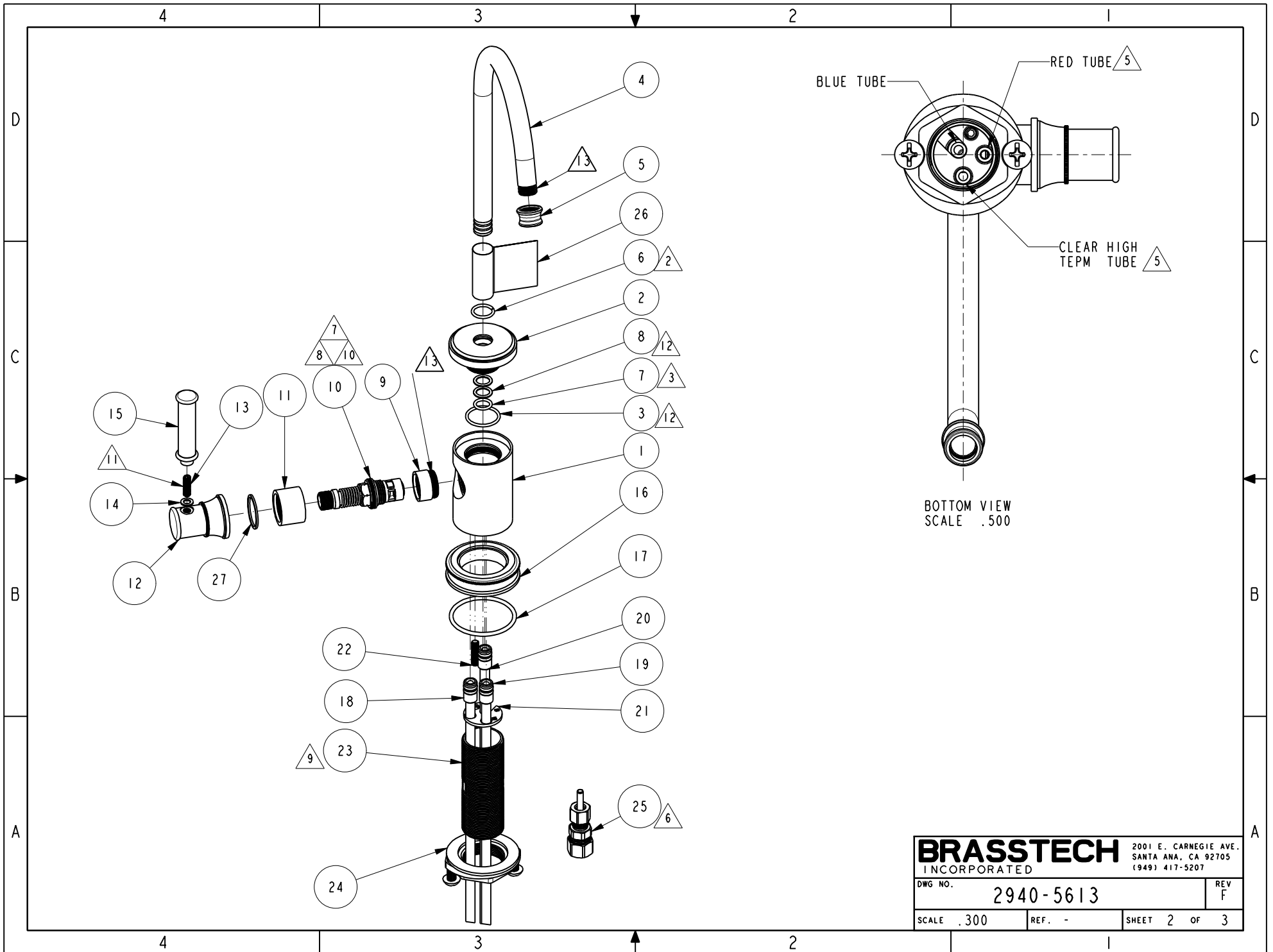
DRAWN	JINSON	11/26/19
CHECKED	C.G.	11/26/19
APPROVED	C.G.	11/26/19

BRASSTECH 2001 CARNEGIE AVE, SANTA ANA, CA 92705 (949) 417-5207
INCORPORATED

HOT WATER DISP, CONTEMP

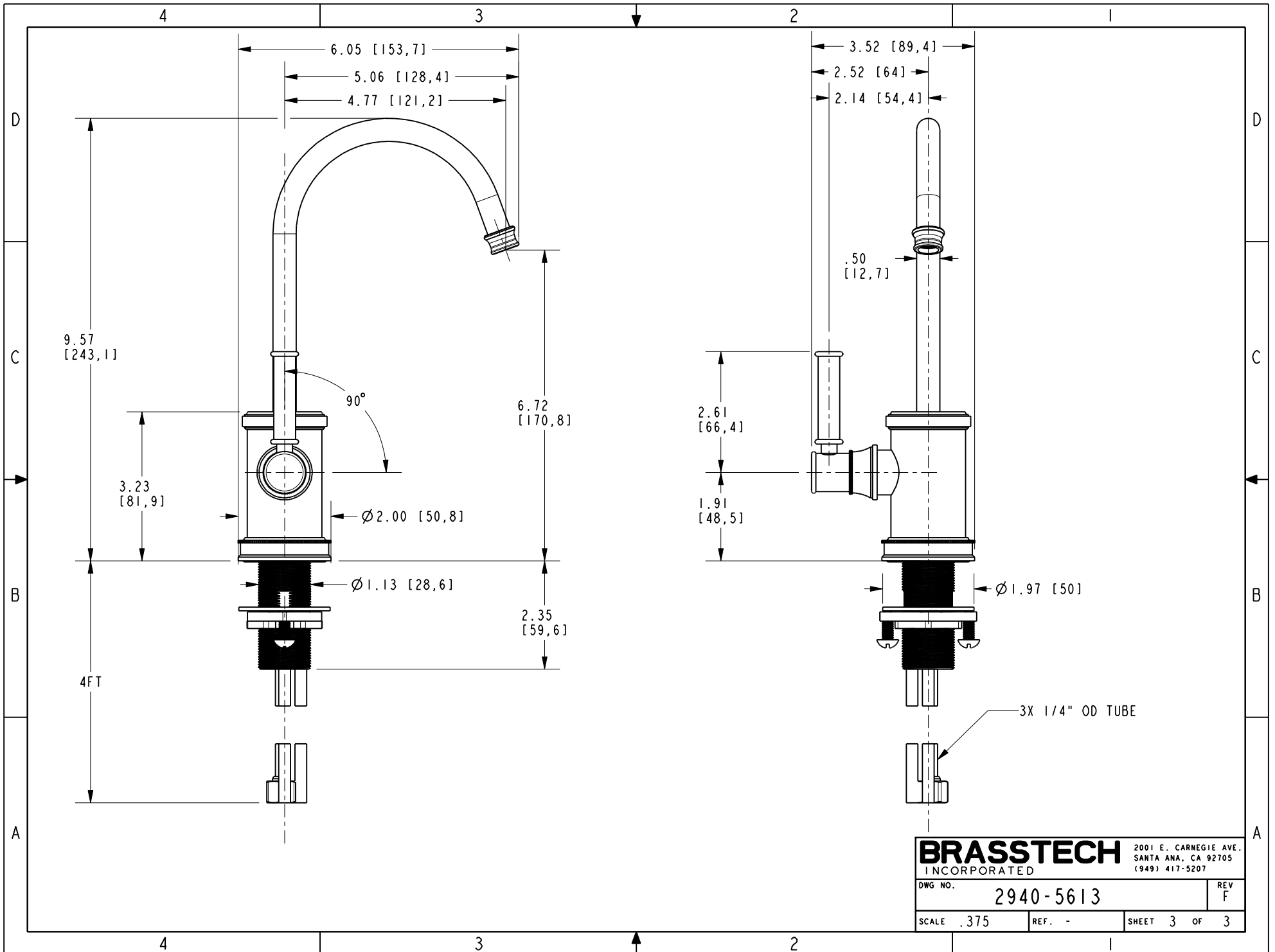
DWG NO. **2940-5613** REV **F**

SCALE .350 REF. - SHEET 1 OF 3



BOTTOM VIEW
SCALE .500

BRASSTECH		2001 E. CARNEGIE AVE. SANTA ANA, CA 92705 (949) 417-5207	
DWG NO.	2940-5613	REV	F
SCALE .300	REF. -	SHEET 2	OF 3



BRASSTECH		2001 E. CARNEGIE AVE.
INCORPORATED		SANTA ANA, CA 92705
		(949) 417-5207
DWG NO.	2940-5613	REV F
SCALE .375	REF. -	SHEET 3 OF 3