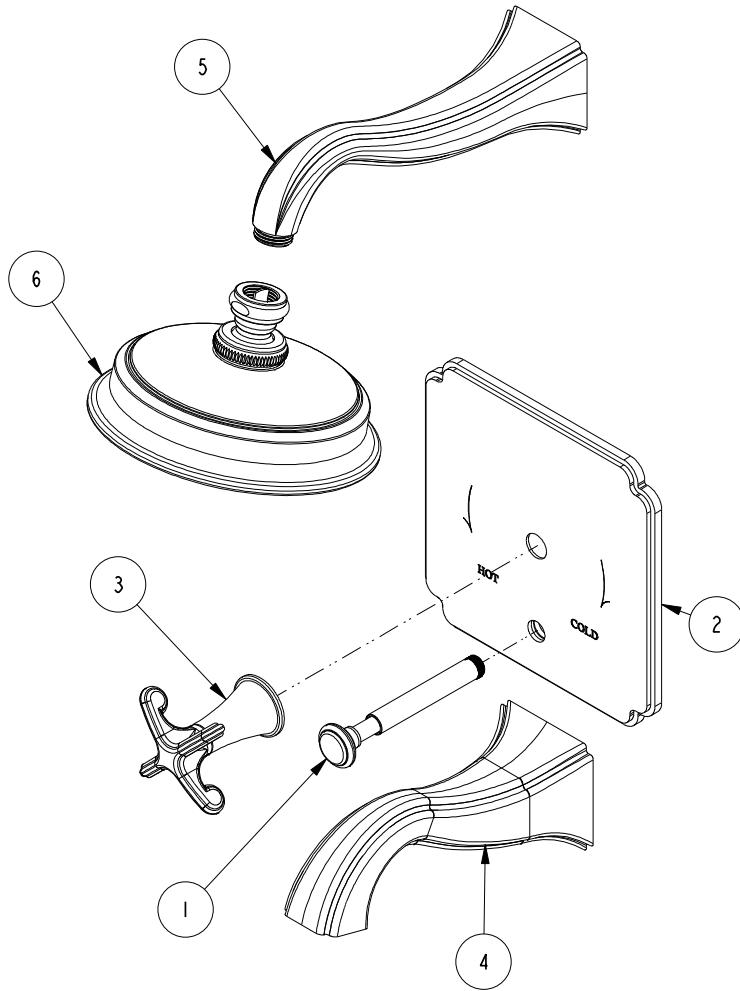


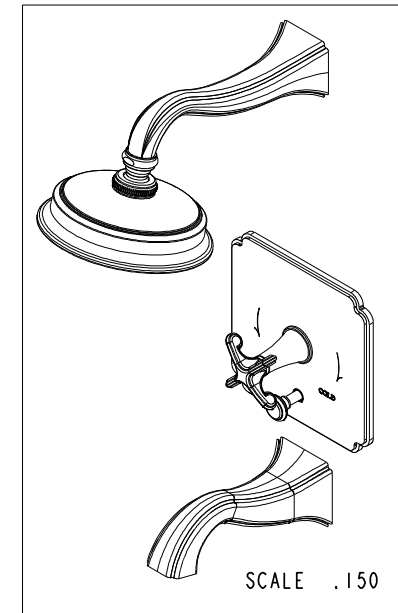
NOTES:

(N1) 1. FIT / FORM / FUNCTION SHALL FOLLOW PS-E.008.



BILL OF MATERIAL (CURRENT LEVEL)

ITEM	PT/ASSY	DESCRIPTION	TYPE	QTY.
1	8-007	DIVERTER TRIM ASM	ASSEMBLY	1
2	8-006	SHOWER PLATE ASM	ASSEMBLY	1
3	20-299	BP LEVER HANDLE ASM	ASSEMBLY	1
4	8-009	TUB WALL SPOUT ASM	ASSEMBLY	1
5	13039	SHOWER ARM	PART	1
6	2142	TRAD. SHOWER HEAD - SINGLE JET	ASSEMBLY	1



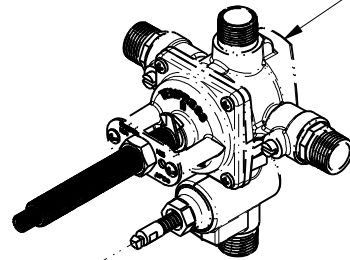
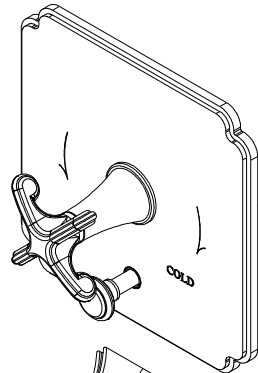
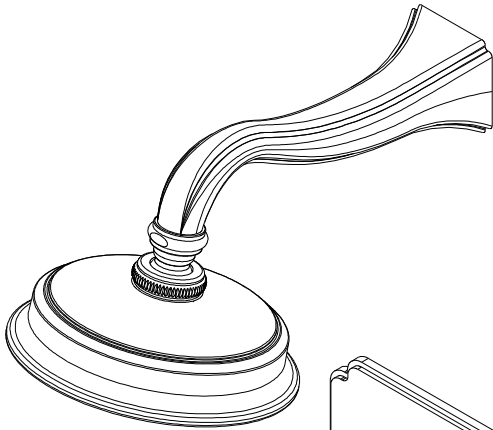
-	F	EN-3552f	04/25/19	J.M.
-	E	EN-3435	01/18/18	J.A.
-	D	EN-2027b	07/07/15	AN
-	C	EN-2068	02/09/12	AN
-	B	EN-2027	02/22/12	AN
-	A	EN-1805	06/29/11	JM
-	-	EN-1735	06/10/11	JM
ZONE	REV	DESCRIPTION	DATE	APPROVED

COPYRIGHT 2005 BRASSTECH, INC. THESE DRAWINGS AND THE DESIGNS DEPICTED HEREIN ARE THE PROPRIETARY PROPERTY OF BRASSTECH. ANY USE OR REPRODUCTION IS SUBJECT TO THE EXPRESS APPROVAL OF BRASSTECH. UNAUTHORIZED USE IS STRICTLY PROHIBITED. ALL RIGHTS RESERVED.

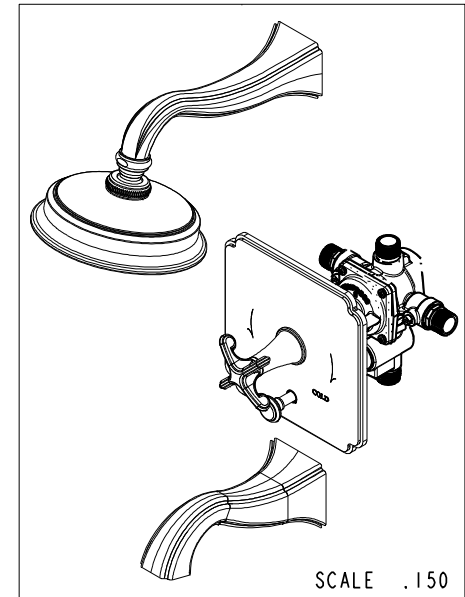
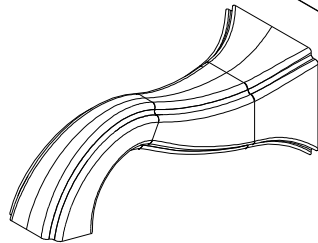
TESTING	-	-	-
ASSEMBLY	-	-	-
PLATING	-	-	-
POLISHING	-	NEXT ASSY	USED ON
MACHINING	-	APPLICATION	
TOOLING FIXTURE #	REMOVE ALL BURRS AND SHARP EDGES		

UNITS ARE: INCHES [MM]		
TOLERANCES ARE:		
FRACTIONS	DECIMALS	ANGLES
±1/16"	.X ±.1 [2.5]	±1°
	.XX ±.06 [1.5]	
(X.XXX) DENOTES CRITICAL DIMS.		
ALL THREADS ARE CRITICAL		
DRAWN	JINSON	01/18/18
CHECKED	J.A.	01/18/18
APPROVED	J.A.	01/18/18

BRASSTECH		2001 CARNEGIE AVE. SANTA ANA, CA 92705 (949) 417-5207	
INCORPORATED			
BP TUB & SHOWER TRIM SET W/ CROSS HANDLE			
DWG NO.	3-2522BP		REV F
SCALE	.250	REF.	-
SHEET	1	OF	3



PN: 1-595
SOLD SEPARATELY



SCALE .150

BRASSTECH 2001 E. CARNEGIE AVE.
INCORPORATED SANTA ANA, CA 92705
(949) 417-5207

DWG NO.	3-2522BP	REV	F
SCALE	.250	REF.	-
SHEET 2		OF 3	

