

TARA ULTRA POT FILLER Cold-water valve - Brushed Platinum

30 805 875 Product version from 10/1/2024



- 500mm projection
- pivoting spout
- laminar flow
- cold water only
- max. flow 5.7 l/min at 3 bar flow pressure
- min. recess depth 125 mm
- max. recess depth 80 mm
- lead-free
- This product can help a building meet the requirements of Green Building Rating Systems, e.g. LEED®, BREEAM®, DGNB
- WRAS

| | | |
|--|--------------------------------|---------------|
|  | Brushed Platinum | 30 805 875-06 |
|  | Chrome | 30 805 875-00 |
|  | Platinum | 30 805 875-08 |
|  | Durabronze (23kt Gold) | 30 805 875-09 |
|  | Dark Chrome | 30 805 875-19 |
|  | Brushed Durabronze (23kt Gold) | 30 805 875-28 |
|  | Brushed Champagne (22kt Gold) | 30 805 875-46 |
|  | Champagne (22kt Gold) | 30 805 875-47 |
|  | Brushed Chrome | 30 805 875-93 |
|  | Brushed Dark Platinum | 30 805 875-99 |

Required miscellaneous

POT FILLER Concealed wall elbow 35 087 970 90

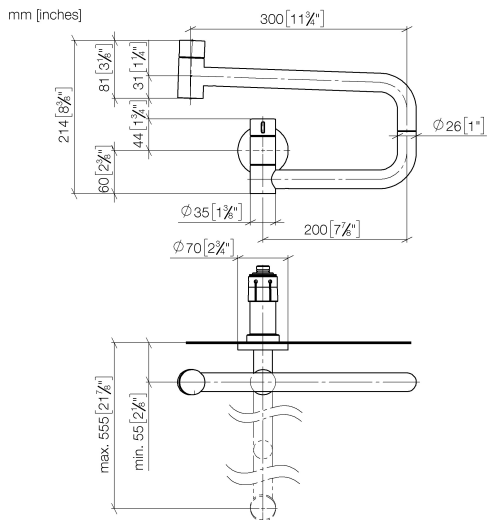


- max. recess depth mm
- min. recess depth mm

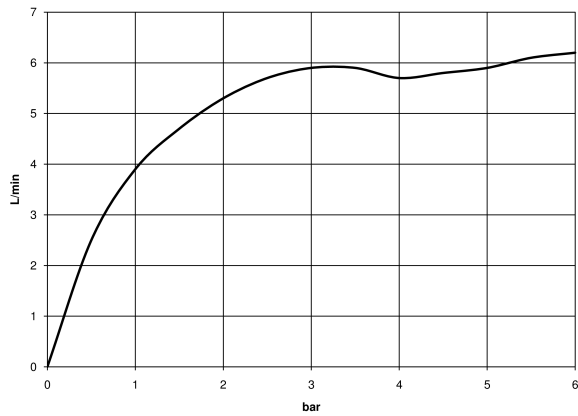


TARA ULTRA POT FILLER Cold-water valve - Brushed Platinum

30 805 875 Product version from 10/1/2024



Flow rate chart



Codes & Standards

| | | | |
|----------------|-------|------------------------|-----------------------------|
| ASME A112.18.1 | cUPC | DIN 4109 | ISO 3822 |
| NSF372 | NSF61 | Scottish Water Byelaws | UK Water Supply Regulations |

Ü-Zeichen



TARA ULTRA POT FILLER Cold-water valve - Brushed Platinum

30 805 875 Product version from 10/1/2024

Certificates

LGA_29

IAPMO_N-4

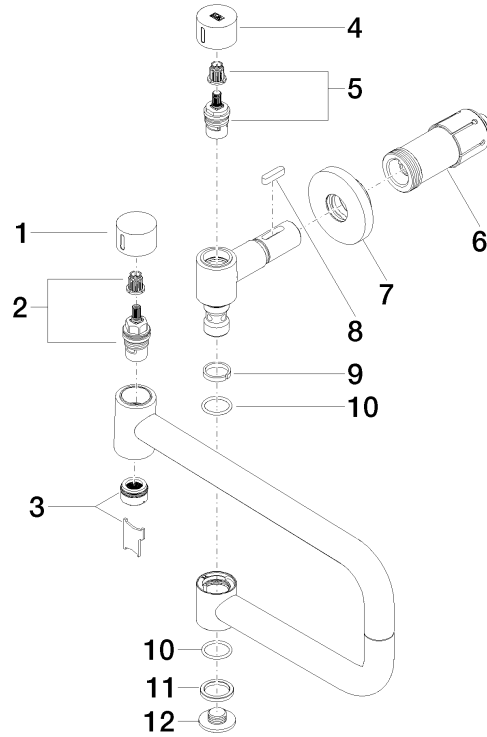
IAPMO_6

WRAS_240702

IAPMO_4976 (

TARA ULTRA POT FILLER Cold-water valve - Brushed Platinum

30 805 875 Product version from 10/1/2024



Spare parts list

| No. | Item Number | Name | Quantity used | Delivery time |
|-----|--------------------|------------|---------------|---------------|
| 1 | 09 20 62 025-06 | handle | 1 | 10 |
| 2 | 90 90 03 146 00 90 | top | 1 | 2 |
| 3 | 90 23 01 026 11-06 | aerator | 1 | 10 |
| 4 | 09 20 62 027-06 | handle | 1 | 10 |
| 5 | 90 90 03 171 00 90 | top | 1 | 2 |
| 6 | 90 30 01 213 00 90 | connection | 1 | 2 |
| 7 | 90 27 87 039 00-06 | rosette | 1 | 10 |
| 8 | 90 16 04 001 00 90 | spring | 1 | 2 |
| 9 | 09 28 10 136 90 | ring | 1 | 2 |
| 10 | 09 14 10 015 90 | seal | 2 | 2 |
| 11 | 09 28 10 139 90 | ring | 1 | 2 |
| 12 | 09 21 02 028-06 | lid | 1 | 10 |