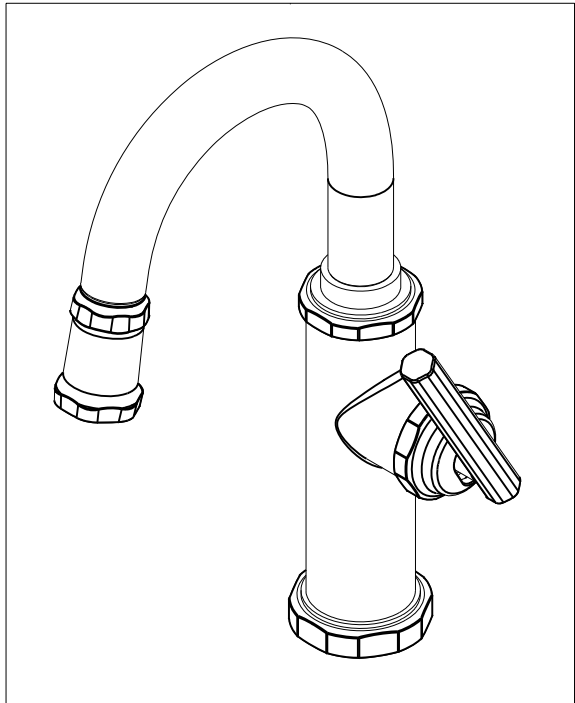


NOTES:

- (NI) 1. FIT / FORM / FUNCTION SHALL FOLLOW PS-E.008.
- 2. PUT THESE ITEMS IN SEPARATE PLASTIC BAGS.
- 3. TORQUE TO 7.5-8.5 LB-FT.
- 4. APPLY THIN COAT OF SILICON GREASE FOR ALL O-RINGS BEFORE INSTALLATION.
- 5. APPLY LOCTITE 242, IF SCREW DOES NOT HAVE NYLON PATCH.
- 6. APPLY LOCTITE 680.
- 7. APPLY SILICONE GREASE 10" FROM OUTLET OF PN 11877.**



J.R. 01/21/2020

BILL OF MATERIAL (CURRENT LEVEL)

| ITEM | PT/ASSY | DESCRIPTION | TYPE | QTY. |
|------|---------|---|----------|------|
| 1 | 20-208 | BASE RING ASM | ASSEMBLY | 1 |
| 2 | 20-224 | MAIN BODY ASM, TAFT | ASSEMBLY | 1 |
| 3 | 12617 | COLLAR | PART | 1 |
| 4 | 12637 | SPOUT ADAPTER | PART | 1 |
| 5 | 1-064 | SINGLE LEVER CARTRIDGE | PART | 1 |
| 6 | 1-266 | CART. RETAINER ASM | ASSEMBLY | 1 |
| 7 | 11874 | HANDLE ADAPTER SCREW | PART | 1 |
| 8 | 91534 | CARTRIDGE STEM INSERT | PART | 1 |
| 9 | 12844 | HANDLE HUB | PART | 1 |
| 10 | 20-321 | HANDLE LEVER ASM | ASSEMBLY | 1 |
| 11 | 91030 | O-RING, #2- 115, EPDM, 65-75 DURO, NSF 61 | PART | 4 |
| 12 | 91712 | SLEEVE | PART | 1 |
| 13 | 12494 | SPOUT | PART | 1 |
| 14 | 91544 | MAGNET DOCKING | ASSEMBLY | 1 |
| 15 | 3-588 | SPRAY HEAD, TAFT | ASSEMBLY | 1 |
| 16 | 11877 | HOSE, PULLDOWN, GREY | ASSEMBLY | 1 |
| 17 | 91255 | O-RING, #2- 011, EPDM, 65-75 DURO, NSF 61 | PART | 2 |
| 18 | 91568 | RETAINER CLIP | PART | 1 |
| 19 | 1-256 | MOUNTING KIT | ASSEMBLY | 1 |
| 20 | 91341 | ZIP TIE | PART | 1 |
| 21 | 98044 | LABEL - HOT | PART | 1 |
| 22 | 1-286 | WEIGHT | ASSEMBLY | 1 |

| | | | |
|-------------------|---|----------------------------------|---------|
| TESTING | - | - | - |
| ASSEMBLY | - | - | - |
| PLATING | - | - | - |
| POLISHING | - | NEXT ASSY | USED ON |
| MACHINING | - | APPLICATION | |
| TOOLING FIXTURE # | | REMOVE ALL BURRS AND SHARP EDGES | |

BRASSTECH 2001 CARNEGIE AVE. SANTA ANA, CA 92705 (949) 417-5207
INCORPORATED

PREP/BAR PULL DOWN

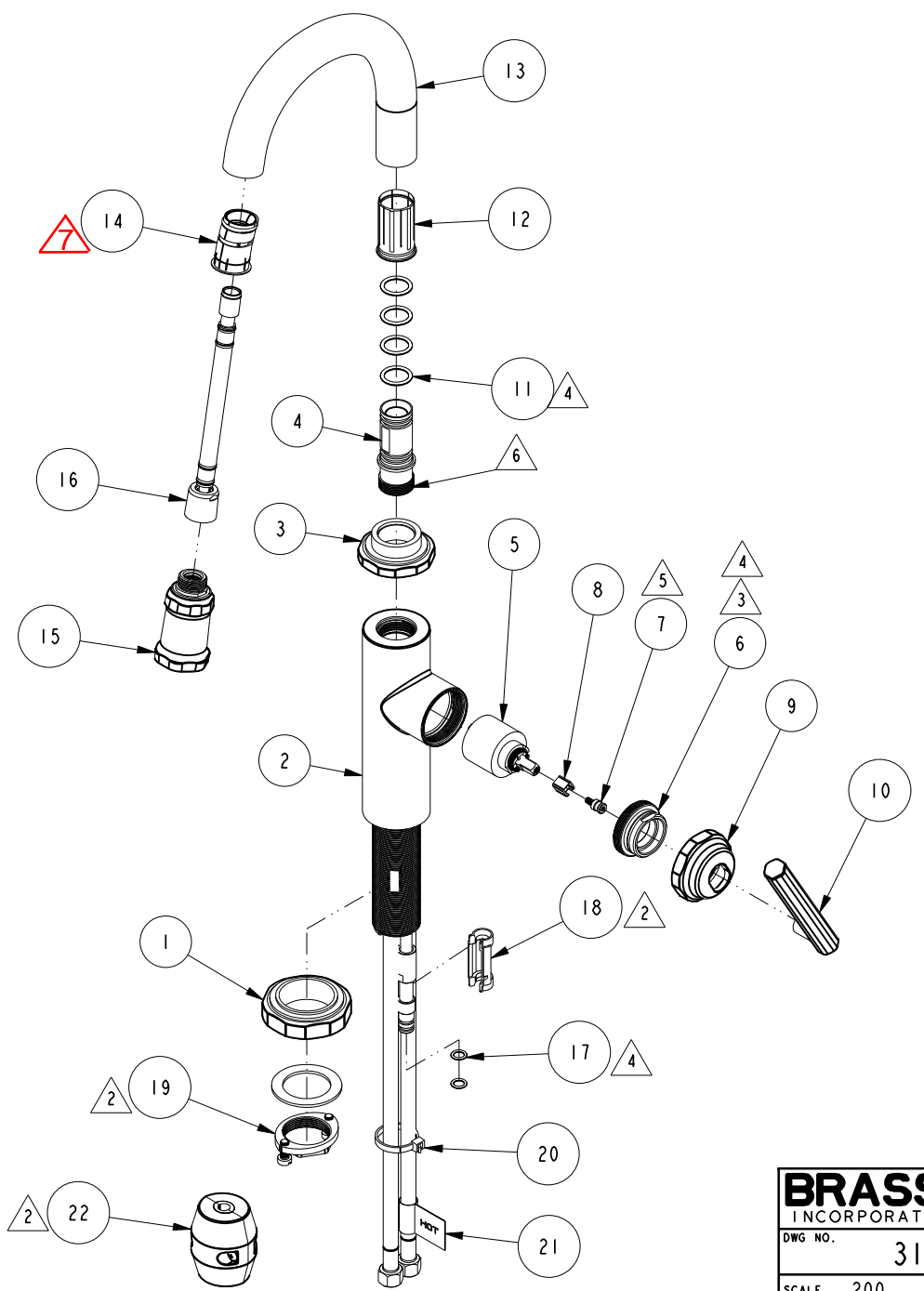
DWG NO. 3190-5223

SCALE .300 REF. - SHEET 1 OF 3

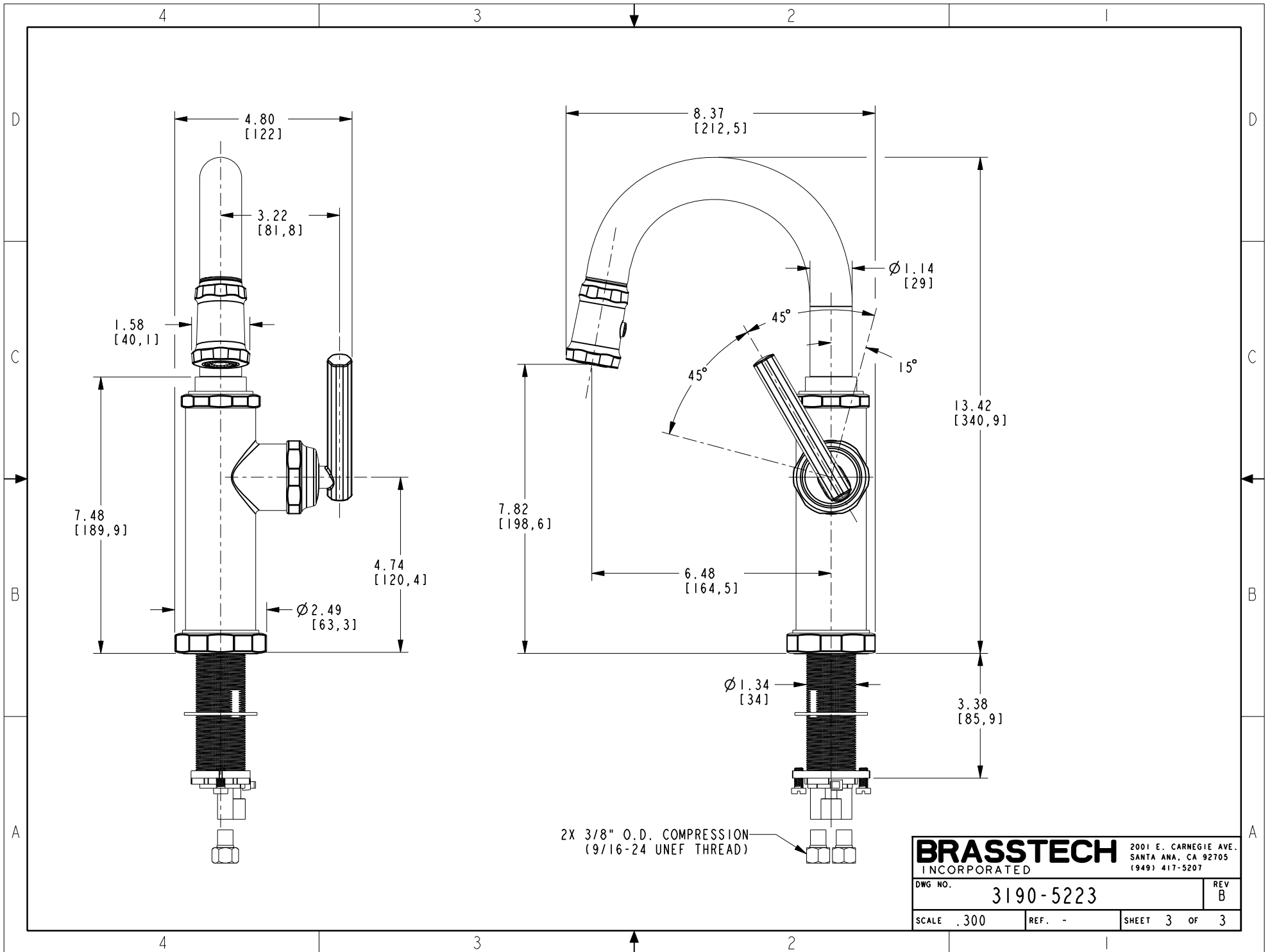
| ZONE | REV | DESCRIPTION | DATE | APPROVED |
|------|-----|-------------|----------|----------|
| - | B | EN-3931b | 09/23/19 | J.M. |
| - | A | EN-3413b | 11/14/17 | JM |
| - | - | EN-3229 | 06/19/17 | JM |

COPYRIGHT 2005 BRASSTECH, INC. THESE DRAWINGS AND THE DESIGNS DEPICTED HEREIN ARE THE PROPRIETARY PROPERTY OF BRASSTECH. ANY USE OR REPRODUCTION IS SUBJECT TO THE EXPRESS APPROVAL OF BRASSTECH. UNAUTHORIZED USE IS STRICTLY PROHIBITED. ALL RIGHTS RESERVED.

| | |
|---|--|
| UNITS ARE: INCHES [MM] | |
| TOLERANCES ARE: | |
| FRACTIONS DECIMALS ANGLES | |
| ±1/16" .X ±.1 (2.5) ±1° | |
| .XX ±.06 (1.5) | |
| (X.XXX) DENOTES CRITICAL DIMS. ALL THREADS ARE CRITICAL | |
| DRAWN JINSON 09/23/19 | |
| CHECKED J.M. 09/23/19 | |
| APPROVED J.M. 09/23/19 | |



| | | | |
|-------------------|--------|-----------------------|--|
| BRASSTECH | | 2001 E. CARNEGIE AVE. | |
| INCORPORATED | | SANTA ANA, CA 92705 | |
| DWG NO. 3190-5223 | | REV B | |
| SCALE .200 | REF. - | SHEET 2 OF 3 | |



2X 3/8" O.D. COMPRESSION
(9/16-24 UNEF THREAD)

| | | | |
|------------------|--------|-----------------------|------|
| BRASSTECH | | 2001 E. CARNEGIE AVE. | |
| INCORPORATED | | SANTA ANA, CA 92705 | |
| DWG NO. | | REV | |
| 3190-5223 | | B | |
| SCALE .300 | REF. - | SHEET 3 | OF 3 |