

TARA ULTRA PIVOT Single-lever mixer - Brushed Durabronze (23kt Gold)

33 845 875 Product version from 10/27/2020



- 21-3/4" Projection
- Swiveling spout 360°
- Aerated stream
- Total height 14-5/8"
- Height to aerator/spout outlet 11-3/8"
- Flange 2-1/8"
- 1-1/8" hole diameter
- 2 x pressure hose with 3/8" compression fitting
- Water flow rate limited to max. 1.5 gpm
- lead-free
- This product can help a building meet the requirements of Green Building Rating Systems, e.g. LEED®, BREEAM®, DGNB

(ADA)

Combination with side spray set or profi side spray set not possible.

	Brushed Durabronze (23kt Gold)	33 845 875-28 0010
	Chrome	33 845 875-00 0010
	Brushed Platinum	33 845 875-06 0010
	Platinum	33 845 875-08 0010
	Durabronze (23kt Gold)	33 845 875-09 0010
	Dark Chrome	33 845 875-19 0010
	Brushed Bronze	33 845 875-42 0010
	Brushed Champagne (22kt Gold)	33 845 875-46 0010
	Champagne (22kt Gold)	33 845 875-47 0010
	Brushed Chrome	33 845 875-93 0010
	Brushed Dark Platinum	33 845 875-99 0010

Recommended article



AIR SWITCH operating button, trim parts only - Brushed Durabronze (23kt Gold)

10 713 970-28

Recommended article



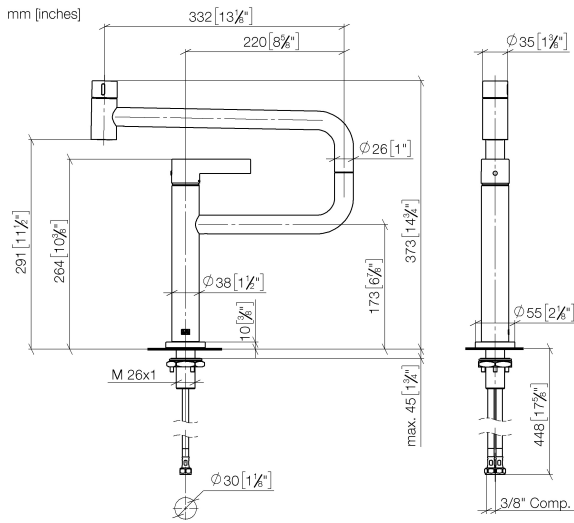
Soap dispenser with flange - Brushed Durabronze (23kt Gold)

82 444 970-28

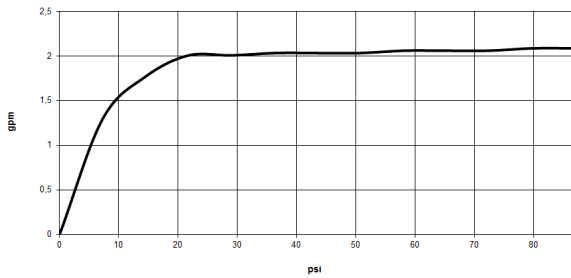


TARA ULTRA PIVOT Single-lever mixer - Brushed Durabronz (23kt Gold)

33 845 875 Product version from 10/27/2020



Flow rate chart



Codes & Standards

ADA

ASME
A112.18.1/CSA
B125.1

California Energy
Commission
(CEC)

NSF/ANSI 372

NSF/ANSI/CAN
61

NSF372

NSF61



TARA ULTRA PIVOT Single-lever mixer - Brushed Durabronz (23kt Gold)

33 845 875 Product version from 10/27/2020

Certificates

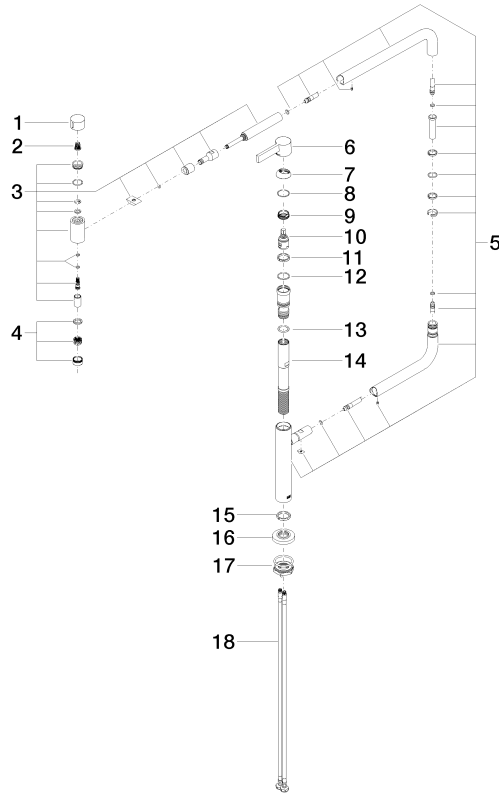
IAPMO_N-4976

IAPMO_6397

TARA ULTRA PIVOT Single-lever mixer - Brushed Durabronz (23kt Gold)

33 845 875 Product version from 10/27/2020

Parts for other finishes can be found here: [Chrome](#)



Spare parts list

Number	Item Number	Designation	Number of units	Lead time
1	09 20 62 025-28	handle	1	20
2	90 12 12 002 00 90	fixing cap	1	2
3	90 19 87 001 00-28	spout	1	20
4	90 23 01 026 08-28	aerator	1	20
5	90 28 22 257 00-28	joint	1	20
6	90 20 87 004 00-28	handle	1	20
7	09 28 30 013-28	cover	1	20
8	09 14 10 091 90	seal	1	2
9	09 24 04 266 90	nut	1	2
10	90 15 05 042 00 90	cartridge	1	2
11	09 28 10 156 90	ring	1	2
12	90 14 10 063 00 90	seal	1	2
13	09 14 10 081 90	seal	1	2
14	09 30 01 126 90	connection	1	2
15	09 28 10 159 90	ring	1	2
16	09 27 87 033-28	rosette	1	20
17	04 30 11 085 87 90	fixing set	1	2
18	04 30 04 103 00 90	hose	2	2