

TARA Wall mounted two-way diverter - Brushed Durabross (23kt Gold)

36 200 882 Product version from 4/1/2022



- Manual diverter
- Flange 2-3/8"
- with integrated shut-off

(ADA)

Does not allow for simultaneous use of functions

(ADA)

Does not allow for simultaneous use of functions

	Brushed Durabross (23kt Gold)	36 200 882-28 0010
	Chrome	36 200 882-00 0010
	Brushed Platinum	36 200 882-06 0010
	Platinum	36 200 882-08 0010
	Dark Chrome	36 200 882-19 0010
	Matte Black	36 200 882-33 0010
	Brushed Bronze	36 200 882-42 0010
	Brushed Champagne (22kt Gold)	36 200 882-46 0010
	Champagne (22kt Gold)	36 200 882-47 0010
	Brushed Chrome	36 200 882-93 0010
	Brushed Dark Platinum	36 200 882-99 0010

Required article



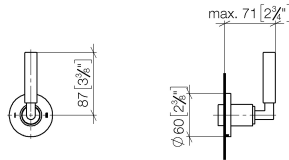
- | | |
|--|---------------|
| Wall mounted two-way diverter - | 35 202 970-90 |
| •Max. rough in depth " | 0010 |
| •Min. rough in depth " | |



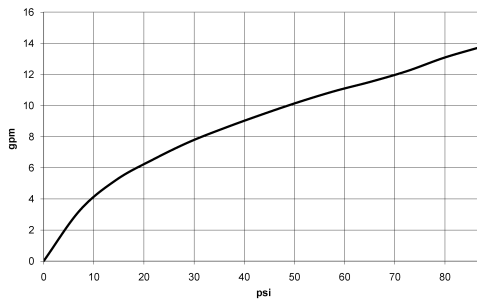
TARA Wall mounted two-way diverter - Brushed Durabron (23kt Gold)

36 200 882 Product version from 4/1/2022

mm [inches]



Flow rate chart

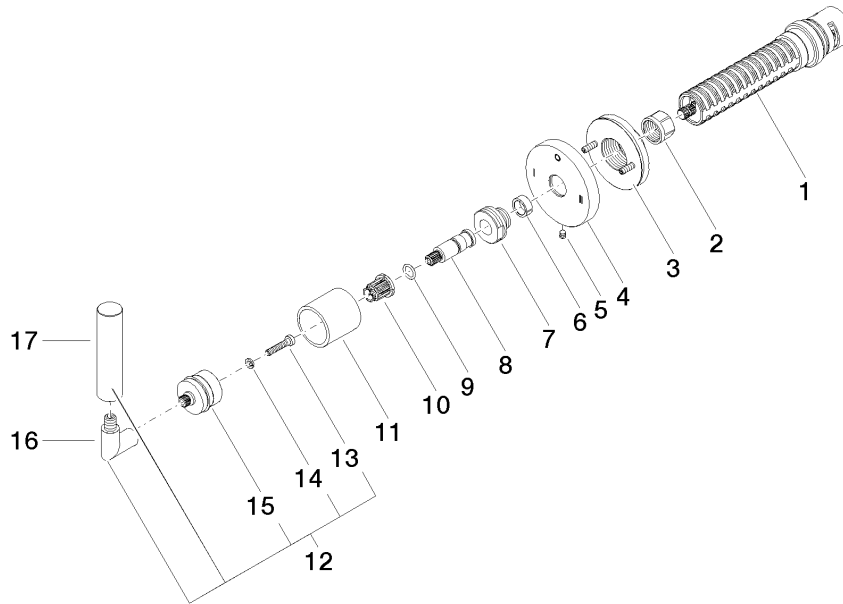


Codes & Standards

California Energy
Commission
(CEC)

TARA Wall mounted two-way diverter - Brushed Durabronz (23kt Gold)

36 200 882 Product version from 4/1/2022



Spare parts list

Number	Item Number	Designation	Number of units	Lead time
	1 90 90 03 306 10 90	diverter	1	2
	2 90 23 30 023 00 90	nut	1	2
	3 90 21 02 181 00 90	disc	1	2
	4 09 27 89 120-28	rosette	1	60
	5 09 31 11 294 90	pin	1	2
	6 90 14 15 020 03 90	ring	1	2
	7 09 24 05 002 90	nipple	1	2
	8 09 29 06 022 90	spindle	1	2
	9 90 14 10 060 00 90	seal	1	2
	10 90 12 12 002 00 90	fixing cap	1	2
	11 09 21 02 144-28	sleeve	1	20
	12 04 20 88 052 10-28	handle	1	20
	13 90 30 30 075 00 90	screw	1	2
	14 90 30 11 029 00 90	disc	1	2
	15 90 12 12 219 00-28	base	1	20
	16 04 18 20 022 00-28	angle	1	-
Spare part can no longer be ordered, please order the replacement item				
	17 09 20 88 052-28	handle	1	20