

TARA Wall mounted two-way diverter - Brushed Durabross (23kt Gold)

36 200 892 Product version from 4/1/2022



- Manual diverter
- Flange 2-3/8"
- with integrated shut-off

(ADA)

Does not allow for simultaneous use of functions

(ADA)

Does not allow for simultaneous use of functions

| | | |
|---|-------------------------------|--------------------|
|  | Brushed Durabross (23kt Gold) | 36 200 892-28 0010 |
|  | Chrome | 36 200 892-00 0010 |
|  | Brushed Platinum | 36 200 892-06 0010 |
|  | Platinum | 36 200 892-08 0010 |
|  | Matte Black | 36 200 892-33 0010 |
|  | Brushed Bronze | 36 200 892-42 0010 |
|  | Brushed Champagne (22kt Gold) | 36 200 892-46 0010 |
|  | Champagne (22kt Gold) | 36 200 892-47 0010 |
|  | Brushed Chrome | 36 200 892-93 0010 |
|  | Brushed Dark Platinum | 36 200 892-99 0010 |

Required article



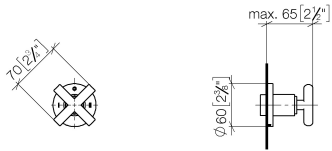
- | | |
|--|---------------|
| Wall mounted two-way diverter - | 35 202 970-90 |
| •Max. rough in depth " | 0010 |
| •Min. rough in depth " | |



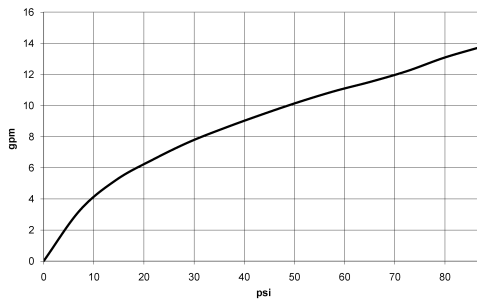
TARA Wall mounted two-way diverter - Brushed Durabron (23kt Gold)

36 200 892 Product version from 4/1/2022

mm [inches]



Flow rate chart

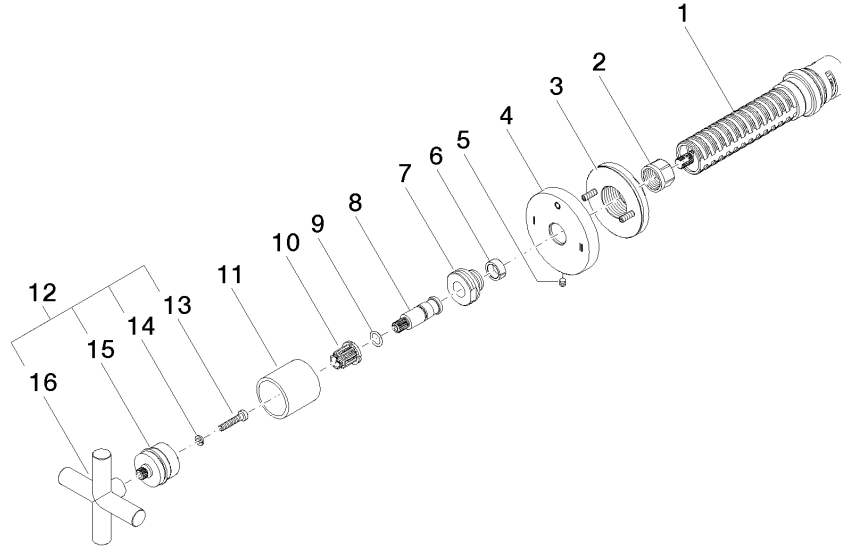


Codes & Standards

California Energy
Commission
(CEC)

TARA Wall mounted two-way diverter - Brushed Durabronz (23kt Gold)

36 200 892 Product version from 4/1/2022



Spare parts list

| Number | Item Number | Designation | Number of units | Lead time |
|--------|--------------------|-------------|-----------------|-----------|
| 1 | 90 90 03 306 10 90 | diverter | 1 | 2 |
| 2 | 90 23 30 023 00 90 | nut | 1 | 2 |
| 3 | 90 21 02 181 00 90 | disc | 1 | 2 |
| 4 | 09 27 89 120-28 | rosette | 1 | 60 |
| 5 | 09 31 11 294 90 | pin | 1 | 2 |
| 6 | 90 14 15 020 03 90 | ring | 1 | 2 |
| 7 | 09 24 05 002 90 | nipple | 1 | 2 |
| 8 | 09 29 06 022 90 | spindle | 1 | 2 |
| 9 | 90 14 10 060 00 90 | seal | 1 | 2 |
| 10 | 90 12 12 002 00 90 | fixing cap | 1 | 2 |
| 11 | 09 21 02 144-28 | sleeve | 1 | 20 |
| 12 | 90 20 89 010 10-28 | handle | 1 | 20 |
| 13 | 90 30 30 075 00 90 | screw | 1 | 2 |
| 14 | 90 30 11 029 00 90 | disc | 1 | 2 |
| 15 | 90 12 12 219 00-28 | base | 1 | 20 |
| 16 | 09 20 89 010-28 | handle | 1 | 60 |