



## TARA Wall mounted two-way diverter - Brushed Champagne (22kt Gold)







36 200 892 Product version from 4/1/2022



- Manual diverter
- Flange 2-3/8"
- with integrated shut-off

(ADA)

Does not allow for simultaneous use of functions

	Brushed Champagne (22kt Gold)	36 200 892-46 0010
	Chrome	36 200 892-00 0010
	Brushed Platinum	36 200 892-06 0010
	Platinum	36 200 892-08 0010
	Brushed Durabronze (23kt Gold)	36 200 892-28 0010
	Matte Black	36 200 892-33 0010
	Brushed Bronze	36 200 892-42 0010
	Champagne (22kt Gold)	36 200 892-47 0010
	Brushed Chrome	36 200 892-93 0010
	Brushed Dark Platinum	36 200 892-99 0010

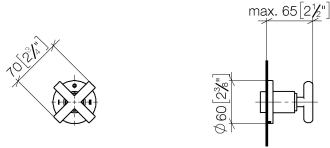


## TARA Wall mounted two-way diverter - Brushed Champagne (22kt Gold)

---

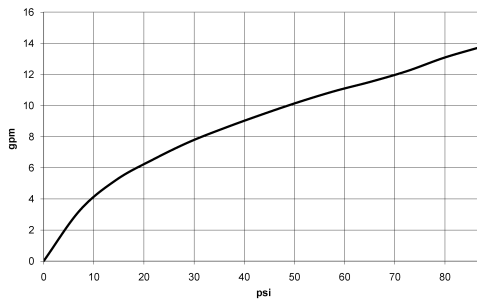
36 200 892 Product version from 4/1/2022

mm [inches]



### Flow rate chart

---



### Codes & Standards

---

ASME A112.18.1

California Energy  
Commission  
(CEC)

cUPC



## TARA Wall mounted two-way diverter - Brushed Champagne (22kt Gold)

---

36 200 892 Product version from 4/1/2022

### Certificates

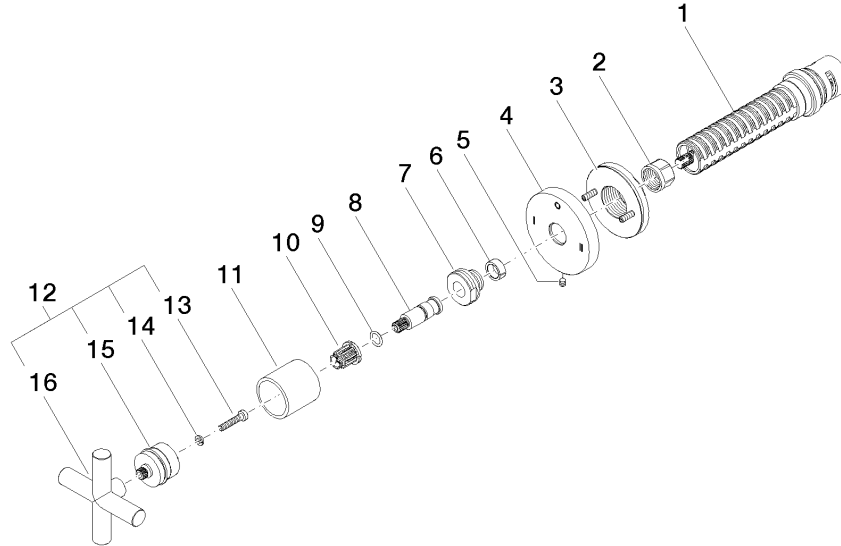
---

IAPMO\_4976 (

**TARA Wall mounted two-way diverter - Brushed Champagne (22kt Gold)**

36 200 892 Product version from 4/1/2022

Parts for other finishes can be found here: [Chrome](#)



**Spare parts list**

Number	Item Number	Designation	Number of units	Lead time
1	90 90 03 306 10 90	diverter	1	2
2	90 23 30 023 00 90	nut	1	2
3	90 21 02 181 00 90	disc	1	2
4	09 27 89 120-46	rosette	1	60
5	09 31 11 294 90	pin	1	2
6	90 14 15 020 03 90	ring	1	2
7	09 24 05 002 90	nipple	1	2
8	09 29 06 022 90	spindle	1	2
9	90 14 10 060 00 90	seal	1	2
10	90 12 12 002 00 90	fixing cap	1	2
11	09 21 02 144-46	sleeve	1	60
12	90 20 89 010 10-46	handle	1	30
13	90 30 30 075 00 90	screw	1	2
14	90 30 11 029 00 90	disc	1	2
15	90 12 12 219 00-46	base	1	30
16	09 20 89 010-46	handle	1	60