



## TARA Wall mounted three-way diverter - Brushed Platinum

36 210 882 Product version from 4/1/2022



- Manual diverter
  - Flange 2-3/8"
  - with integrated shut-off  
**(ADA)**
- Does not allow for simultaneous use of functions**

(ADA)

Does not allow for simultaneous use of functions

	Brushed Platinum	36 210 882-06 0010
	Chrome	36 210 882-00 0010
	Platinum	36 210 882-08 0010
	Brushed Durabrass (23kt Gold)	36 210 882-28 0010
	Matte Black	36 210 882-33 0010
	Brushed Bronze	36 210 882-42 0010
	Brushed Champagne (22kt Gold)	36 210 882-46 0010
	Champagne (22kt Gold)	36 210 882-47 0010
	Brushed Chrome	36 210 882-93 0010
	Brushed Dark Platinum	36 210 882-99 0010

### Required article



- Wall mounted three-way diverter - 35 203 970-90**  
•Max. rough in depth " 0010  
•Min. rough in depth "

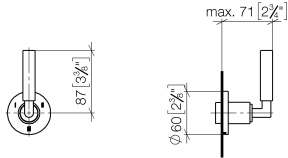


## TARA Wall mounted three-way diverter - Brushed Platinum

---

36 210 882 Product version from 4/1/2022

mm [inches]



### Flow rate chart

---



### Codes & Standards

---

ASME A112.18.1

California Energy  
Commission  
(CEC)

cUPC



## TARA Wall mounted three-way diverter - Brushed Platinum

---

36 210 882 Product version from 4/1/2022

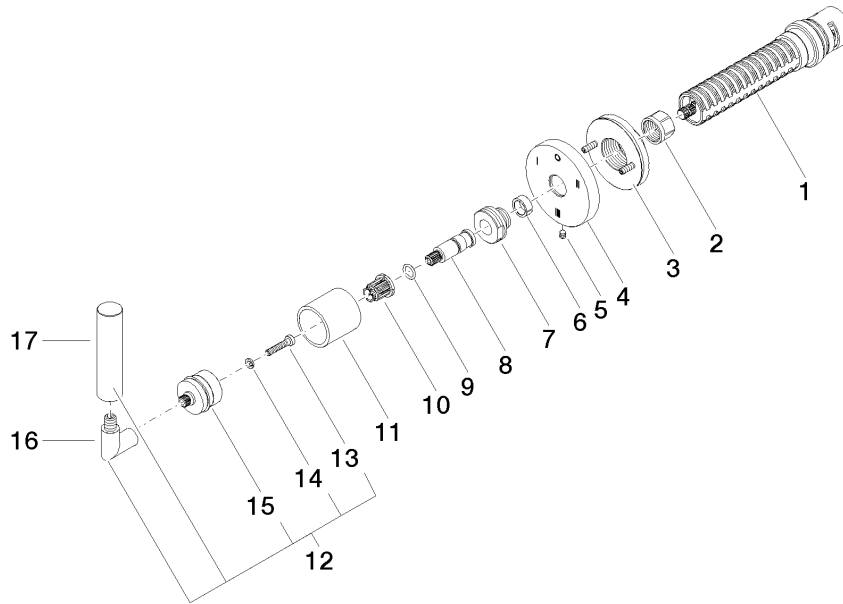
### Certificates

---

IAPMO\_4976 (

**TARA Wall mounted three-way diverter - Brushed Platinum**

36 210 882 Product version from 4/1/2022



**Spare parts list**

Number	Item Number	Designation	Number of units	Lead time
1	90 90 03 305 10 90	diverter	1	2
2	90 23 30 023 00 90	nut	1	2
3	90 21 02 181 00 90	disc	1	2
4	09 27 89 119-06	rosette	1	60
5	09 31 11 294 90	pin	1	2
6	90 14 15 020 03 90	ring	1	2
7	09 24 05 002 90	nipple	1	2
8	09 29 06 022 90	spindle	1	2
9	90 14 10 060 00 90	seal	1	2
10	90 12 12 002 00 90	fixing cap	1	2
11	09 21 02 144-06	sleeve	1	10
12	04 20 88 052 10-06	handle	1	10
13	90 30 30 075 00 90	screw	1	2
14	90 30 11 029 00 90	disc	1	2
15	90 12 12 219 00-06	base	1	10
16	04 18 20 022 00-06	angle	1	10
17	09 20 88 052-06	handle	1	10