



## TARA Wall mounted three-way diverter - Platinum

36 210 882 Product version from 4/1/2022



- Manual diverter
  - Flange 2-3/8"
  - with integrated shut-off  
**(ADA)**
- Does not allow for simultaneous use of functions**

(ADA)

Does not allow for simultaneous use of functions

	Platinum	36 210 882-08 0010
	Chrome	36 210 882-00 0010
	Brushed Platinum	36 210 882-06 0010
	Brushed Durabronze (23kt Gold)	36 210 882-28 0010
	Matte Black	36 210 882-33 0010
	Brushed Bronze	36 210 882-42 0010
	Brushed Champagne (22kt Gold)	36 210 882-46 0010
	Champagne (22kt Gold)	36 210 882-47 0010
	Brushed Chrome	36 210 882-93 0010
	Brushed Dark Platinum	36 210 882-99 0010

### Required article



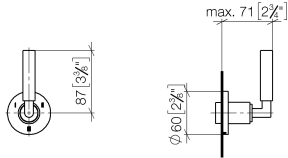
- Wall mounted three-way diverter - 35 203 970-90 0010**
- Max. rough in depth "
  - Min. rough in depth "



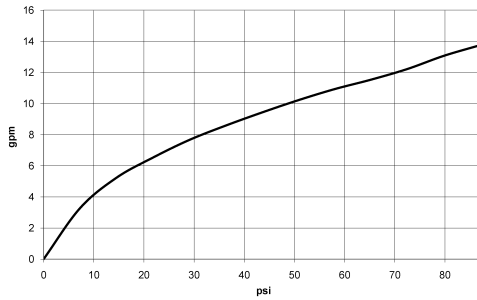
## TARA Wall mounted three-way diverter - Platinum

36 210 882 Product version from 4/1/2022

mm [inches]



### Flow rate chart



### Codes & Standards

ASME A112.18.1

California Energy  
Commission  
(CEC)

cUPC



## TARA Wall mounted three-way diverter - Platinum

---

36 210 882 Product version from 4/1/2022

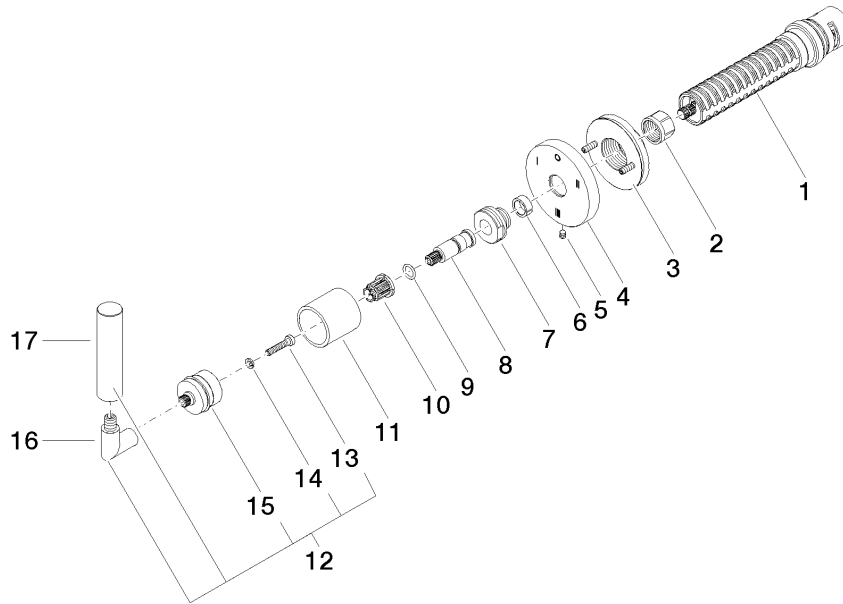
### Certificates

---

IAPMO\_4976 (

**TARA Wall mounted three-way diverter - Platinum**

36 210 882 Product version from 4/1/2022



**Spare parts list**

Number	Item Number	Designation	Number of units	Lead time
	1 90 90 03 305 10 90	diverter	1	2
	2 90 23 30 023 00 90	nut	1	2
	3 90 21 02 181 00 90	disc	1	2
	4 09 27 89 119-08	rosette	1	60
	5 09 31 11 294 90	pin	1	2
	6 90 14 15 020 03 90	ring	1	2
	7 09 24 05 002 90	nipple	1	2
	8 09 29 06 022 90	spindle	1	2
	9 90 14 10 060 00 90	seal	1	2
	10 90 12 12 002 00 90	fixing cap	1	2
	11 09 21 02 144-08	sleeve	1	40
	12 04 20 88 052 10-08	handle	1	40
	13 90 30 30 075 00 90	screw	1	2
	14 90 30 11 029 00 90	disc	1	2
	15 90 12 12 219 00-08	base	1	40
	16 04 18 20 022 00-08	angle	1	-
Spare part can no longer be ordered, please order the replacement item				
	17 09 20 88 052-08	handle	1	40