




TARA Volume Control - Chrome

36 310 892

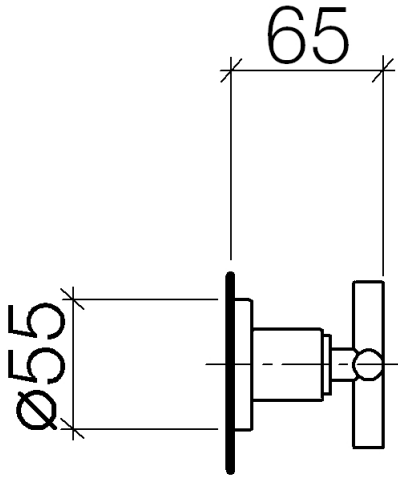
- Flange diameter 2-1/8"



	Chrome	36 310 892-00
<hr/>		
	Durabronz (23kt Gold)	36 310 892-09
<hr/>		

TARA Volume Control - Chrome

36 310 892



Codes & Standards

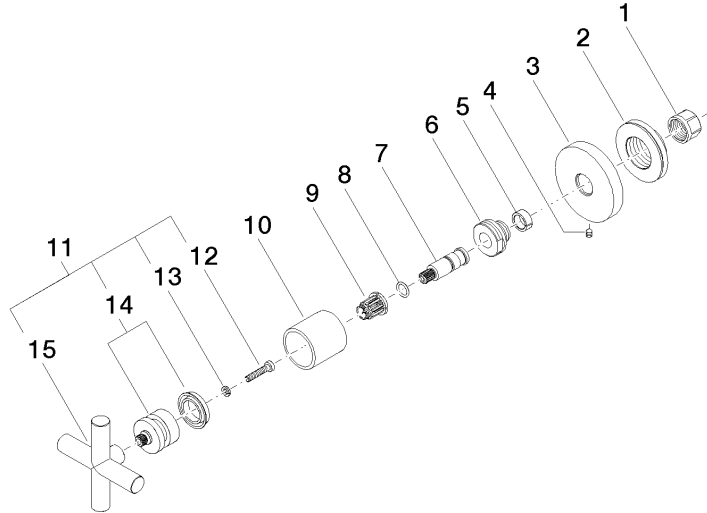
ASME A112.18.1 cUPC

Certificates

IAPMO_4976 (

TARA Volume Control - Chrome

36 310 892



Spare parts list

Number	Item Number	Designation	Number of units	Lead time
1	90 23 30 023 00 90	Nut -	1	2
2	09 21 02 108 90	Sleeve Ø 43,1 x 13 mm -	1	60
3	09 27 89 108-00	Escutcheon Ø 55 x Ø 15,1 x 9 mm - Chrome	1	10
4	90 31 11 007 00 90	Mounting bracket Threaded pin With hex socket M4 x 6 mm -	1	2
5	90 14 15 020 03 90	Support ring -	1	2
6	09 24 05 002 90	Nipple Ø 24 x 16 mm -	1	2
7	09 29 06 022 90	Connection Ø 11 x 38,5 mm -	1	2
8	90 14 10 060 00 90	O-Ring 8,0 x 1,5 mm -	1	2
9	90 12 12 002 00 90	Fixing cap white Ø 15 x 12 mm -	1	2
10	09 21 02 144-00	Hood Ø 30 x 30 mm - Chrome	1	10
11	90 20 89 010 10-00	Handle - Chrome	1	10
12	90 30 30 075 00 90	Mounting bracket Cylinder screw With hex socket Low head M4 x 20 mm -	1	2
13	90 30 11 029 00 90	Connection Spring washer Ø 4 -	1	2
14	90 12 12 007 00-00	Handle Snap-in socket mount Ø 29 x 26 mm - Chrome	1	10
15	09 20 89 010-00	Handle 70 x 70 x 22,5 mm - Chrome	1	-
Spare part can no longer be ordered, please order the replacement item				
	90208901010-00	Handle - Chrome		