




**TARA Volume Control - Brushed Champagne (22kt Gold)**

36 310 892 Product version from 10/14/2020

- Flange diameter 2-1/8"  
(ADA)

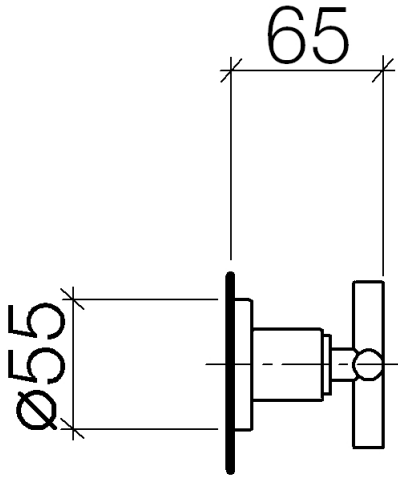


	Brushed Champagne (22kt Gold)	36 310 892-46
	Chrome	36 310 892-00
	Brushed Platinum	36 310 892-06
	Platinum	36 310 892-08
	Durabronz (23kt Gold)	36 310 892-09
	Brushed Light Gold	36 310 892-27
	Brushed Durabronz (23kt Gold)	36 310 892-28
	Matte Black	36 310 892-33
	Brushed Bronze	36 310 892-42
	Champagne (22kt Gold)	36 310 892-47
	Brushed Chrome	36 310 892-93
	Brushed Dark Platinum	36 310 892-99

## TARA Volume Control - Brushed Champagne (22kt Gold)

---

36 310 892 Product version from 10/14/2020



### Codes & Standards

---

ASME A112.18.1 cUPC

### Certificates

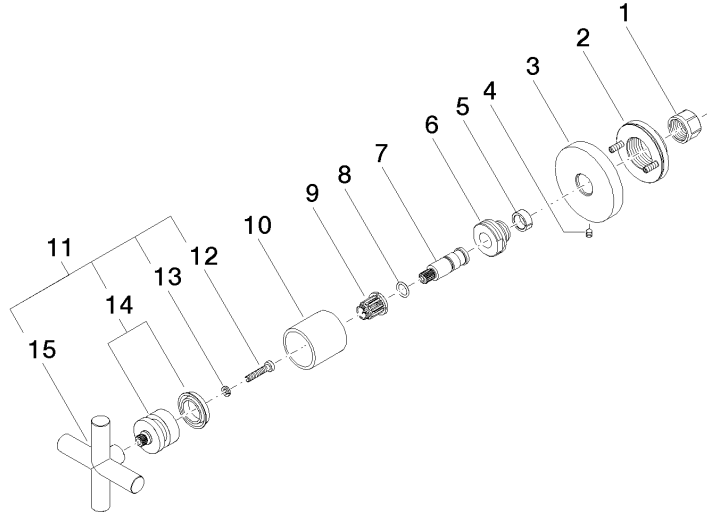
---

IAPMO\_4976 (

**TARA Volume Control - Brushed Champagne (22kt Gold)**

36 310 892 Product version from 10/14/2020

Parts for other finishes can be found here: [Chrome](#)



**Spare parts list**

Number	Item Number	Designation	Number of units	Lead time
1	90 23 30 023 00 90	nut	1	2
2	90 21 02 108 00 90	disc	1	2
3	09 27 89 108-46	rosette	1	30
4	90 31 11 007 00 90	pin	1	2
5	90 14 15 020 03 90	ring	1	2
6	09 24 05 002 90	nipple	1	2
7	09 29 06 022 90	spindle	1	2
8	90 14 10 060 00 90	seal	1	2
9	90 12 12 002 00 90	fixing cap	1	2
10	09 21 02 144-46	sleeve	1	60
11	90 20 89 010 10-46	handle	1	30
12	90 30 30 075 00 90	screw	1	2
13	90 30 11 029 00 90	disc	1	2
14	90 12 12 007 00-46	base	1	30
15	09 20 89 010-46	handle	1	60