




TARA Volume Control - Brushed Dark Platinum

36 310 892

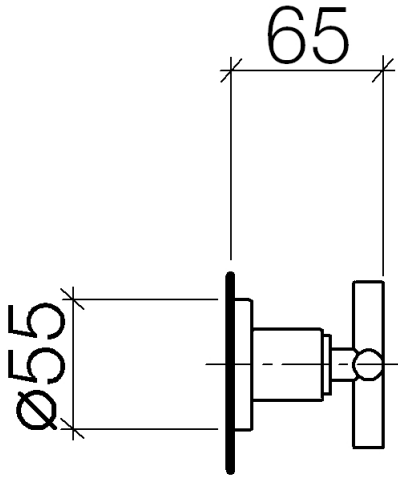
- Flange diameter 2-1/8"



 Brushed Dark Platinum	36 310 892-99
Durabronz (23kt Gold)	36 310 892-09

TARA Volume Control - Brushed Dark Platinum

36 310 892



Codes & Standards

ASME A112.18.1 cUPC

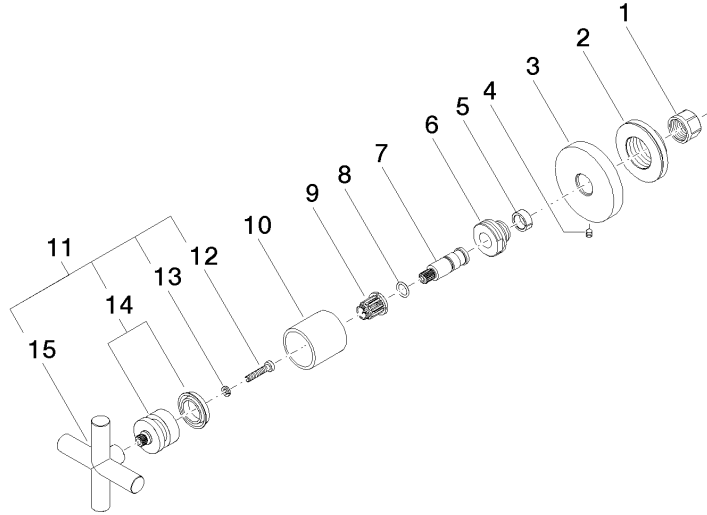
Certificates

IAPMO_4976 (

TARA Volume Control - Brushed Dark Platinum

36 310 892

Parts for other finishes can be found here: Durabronz (23kt Gold)



Spare parts list

Number	Item Number	Designation	Number of units	Lead time
1	90 23 30 023 00 90	Nut -	1	2
2	09 21 02 108 90	Sleeve Ø 43,1 x 13 mm -	1	60
3	09 27 89 108-99	Escutcheon Ø 55 x Ø 15,1 x 9 mm - Brushed Dark Platinum	1	20
4	90 31 11 007 00 90	Mounting bracket Threaded pin With hex socket M4 x 6 mm -	1	2
5	90 14 15 020 03 90	Support ring -	1	2
6	09 24 05 002 90	Nipple Ø 24 x 16 mm -	1	2
7	09 29 06 022 90	Connection Ø 11 x 38,5 mm -	1	2
8	90 14 10 060 00 90	O-Ring 8,0 x 1,5 mm -	1	2
9	90 12 12 002 00 90	Fixing cap white Ø 15 x 12 mm -	1	2
10	09 21 02 144-99	Hood Ø 30 x 30 mm - Brushed Dark Platinum	1	20
11	90 20 89 010 10-99	Handle - Brushed Dark Platinum	1	20
12	90 30 30 075 00 90	Mounting bracket Cylinder screw With hex socket Low head M4 x 20 mm -	1	2
13	90 30 11 029 00 90	Connection Spring washer Ø 4 -	1	2
14	90 12 12 007 00-99	Handle Snap-in socket mount Ø 29 x 26 mm - Brushed Dark Platinum	1	20
15	09 20 89 010-99	Handle 70 x 70 x 22,5 mm - Brushed Dark Platinum	1	-

Spare part can no longer be ordered, please order the replacement item

90208901010-99

Handle - Brushed Dark Platinum