

**AXOR One**  
**Single-Hole Faucet Select 260, 1.2 GPM**  
 Finishes : Part no. : **48030671**



### Features

- Spray modes: Aerated spray
- Flow: 1.2 GPM (4.5 L/Min)
- Select cartridge for easy, intuitive operation: Push handle to turn water on and off, and turn to adjust temperature
- Does not include: Pop-up assembly

### Item details

List Price

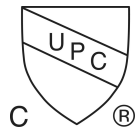
### Technology



### Design awards



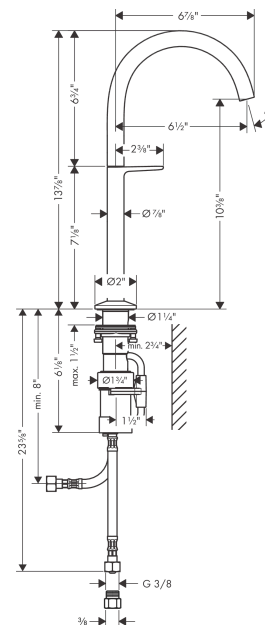
### Compliance



### Product image



### Scale drawing

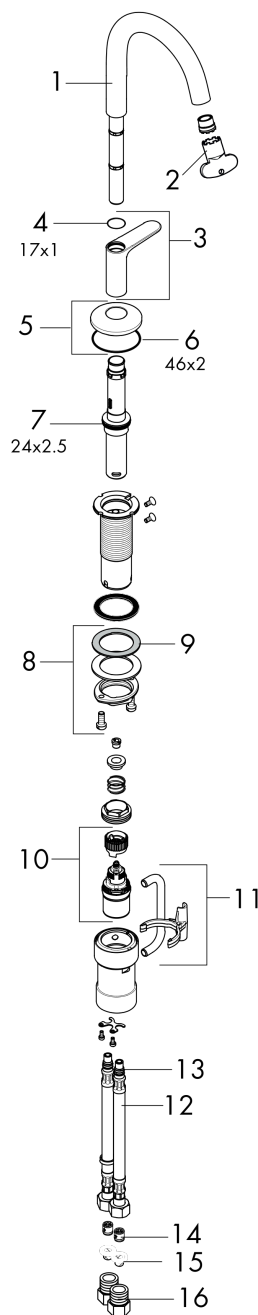


**AXOR One**  
**Single-Hole Faucet Select 260, 1.2 GPM**  
Finishes : Part no. : **48030671**



## Exploded drawing

Year of production: >08/21



**AXOR One**  
**Single-Hole Faucet Select 260, 1.2 GPM**  
 Finishes : Part no. : **48030671**



## Spare parts list

Year of production: >08/21

Pos.		Part no.	Price	PU
1	spout cpl.	94237670	-	1
2	special tool	98987000	-	1
3	handle	94239670	-	1
4	-	94259000	-	1
5	escutcheon	93998670	-	1
6	O-Ring 46x2	98195000	-	1
7	O-ring 24x2,5	98145000	-	1
8	fixing set (Ø 32)	13961000	-	1
9	lever collar	97548000	-	1
10	cartridge, assy	92529000	-	1
11	connection angel	94262000	-	1
12	connection hose 450 mm M8x0,75 G3/8	93405000	-	1
13	O-ring 7x1,5	98422000	-	1
14	non return valve DW 10	96456000	-	1
15	filter packing	95291000	-	1
16	adapter for connection hose	88802000	-	1