

AXOR One
Showerhead 280 2-Jet with Showerarm Trim, 1.75 GPM
 Finishes : Part no. : **48482001**



Features

- Consists of: Showerhead, Showerarm
- Shower head size: 280 mm
- Spray modes: PowderRain, Rain
- Flow: 1.75 GPM (6.6 L/Min)
- Connection of overhead shower: bayonet fixation
- Showerhead removable for cleaning
- Connection type: basic set
- Does not include: Rough

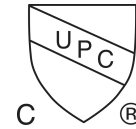
Item details

List Price

Technology



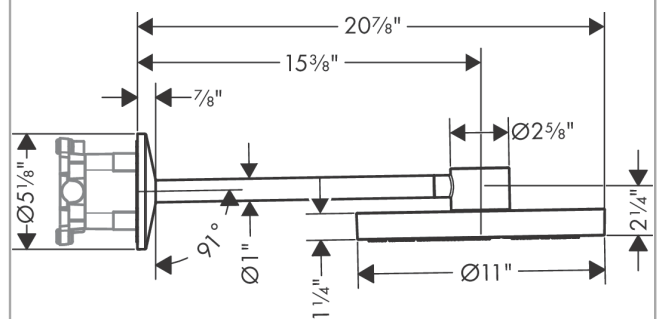
Compliance



Product image



Scale drawing

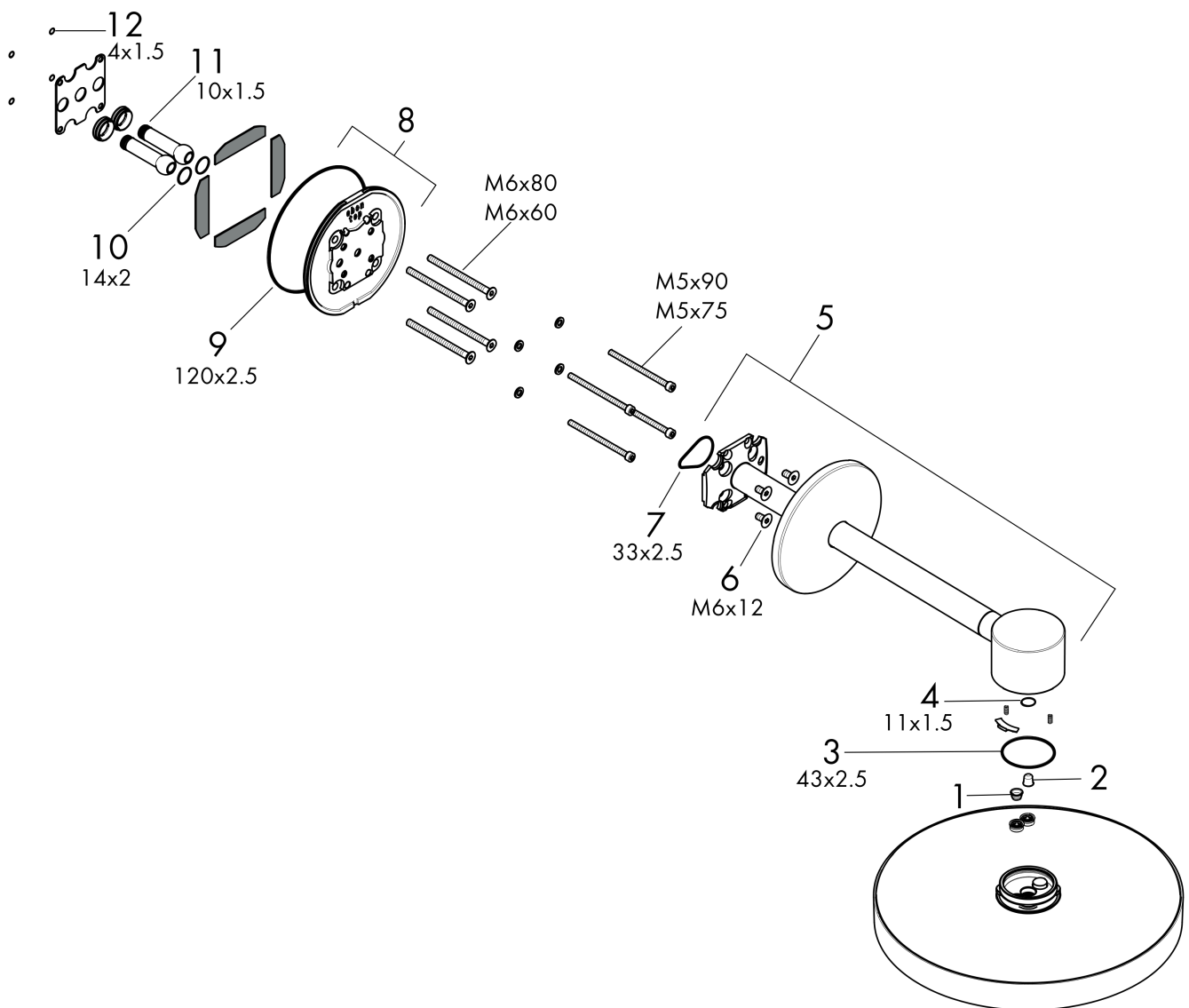


AXOR One
Showerhead 280 2-Jet with Showerarm Trim, 1.75 GPM
Finishes : Part no. : **48482001**



Exploded drawing

Year of production: >08/21



AXOR One
Showerhead 280 2-Jet with Showerarm Trim, 1.75 GPM
 Finishes : Part no. : **48482001**



Spare parts list

Year of production: >08/21

Pos.		Part no.	Price	PU
1	filter	97735000	-	1
2	filter	93967000	-	1
3	O-ring 45x2,5	98432000	-	1
4	O-ring 11x1,5	98385000	-	1
5	shower arm	93966000	-	1
6	screw	92137000	-	1
7	null	92907000	-	1
8	wall flange	93462000	-	1
9	O-ring 120x2,5	93399000	-	1
10	O-ring 14x2	98129000	-	1
11	O-ring 10x1,5	98123000	-	1
12	O-ring 4x1,5	93463000	-	1