

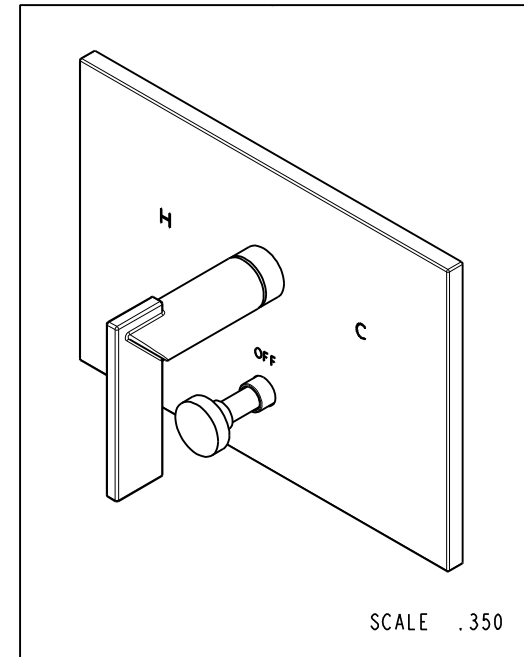
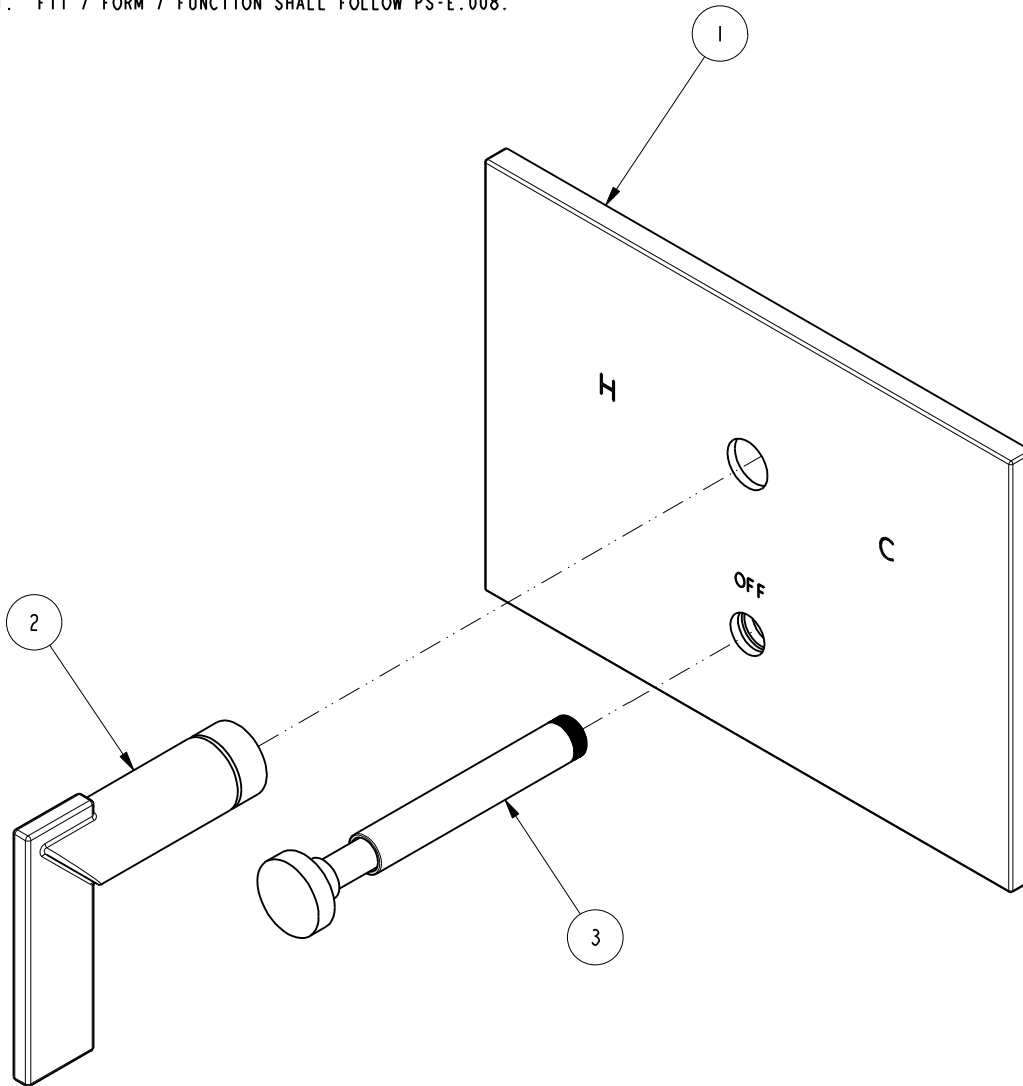
NOTES:

(N1) 1. FIT / FORM / FUNCTION SHALL FOLLOW PS-E.008.

**BILL OF MATERIAL (CURRENT LEVEL)**

| ITEM | PT/ASSY | DESCRIPTION            | TYPE     | QTY. |
|------|---------|------------------------|----------|------|
| 1    | 8-032   | TUB & SHOWER PLATE ASM | ASSEMBLY | 1    |
| 2    | 20-300  | LEVER ASM              | ASSEMBLY | 1    |
| 3    | 8-031   | DIVERTER TRIM          | ASSEMBLY | 1    |
| 4    | 2-894   | SHORT DIVERTER         | ASSY     | 1    |

C.GAYOSSO  
01/18/19



| ZONE | REV | DESCRIPTION | DATE     | APPROVED |
|------|-----|-------------|----------|----------|
| -    | C   | EN-3334     | 01/09/18 | J.A.     |
| -    | B   | EN-3178     | 11/01/16 | J.M.     |
| -    | A   | EN-2997     | 08/25/16 | J.A.     |
| -    | -   | EN-2735     | 04/30/14 | J.M.     |

COPYRIGHT 2005 BRASSTECH, INC. THESE DRAWINGS AND THE DESIGNS DEPICTED HEREIN ARE THE PROPRIETARY PROPERTY OF BRASSTECH. ANY USE OR REPRODUCTION IS SUBJECT TO THE EXPRESS APPROVAL OF BRASSTECH. UNAUTHORIZED USE IS STRICTLY PROHIBITED. ALL RIGHTS RESERVED.

| TESTING | ASSEMBLY | PLATING | POLISHING | MACHINING | TOOLING FIXTURE # | APPLICATION                      |
|---------|----------|---------|-----------|-----------|-------------------|----------------------------------|
| -       | -        | -       | -         | -         | -                 | REMOVE ALL BURRS AND SHARP EDGES |

UNITS ARE: INCHES [MM]  
TOLERANCES ARE:  
FRACTIONS DECIMALS ANGLES  
 $\pm 1/16"$  .X  $\pm .1$  [2,5]  $\pm 1^\circ$   
.XX  $\pm .06$  [1,5]

(X.XXX) DENOTES CRITICAL DIMS.  
ALL THREADS ARE CRITICAL

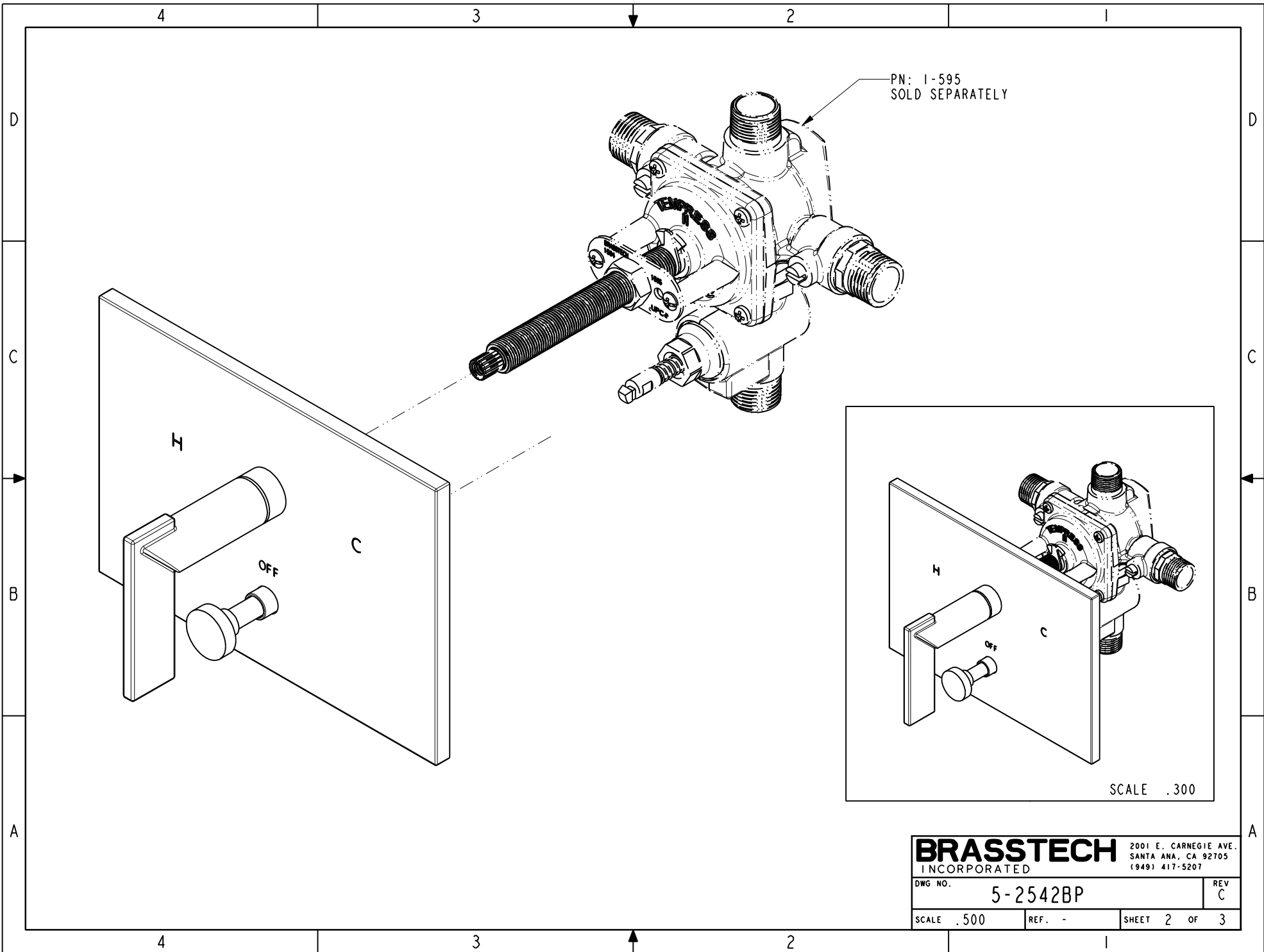
|          |        |          |
|----------|--------|----------|
| DRAWN    | JINSON | 01/09/18 |
| CHECKED  | J.A.   | 01/09/18 |
| APPROVED | J.A.   | 01/09/18 |

**BRASSTECH** INCORPORATED  
2001 CARNEGIE AVE.  
SANTA ANA, CA 92705  
(949) 417-5207

**BP TRIM PLATE WITH DIVERTER, LEVER HANDLE**

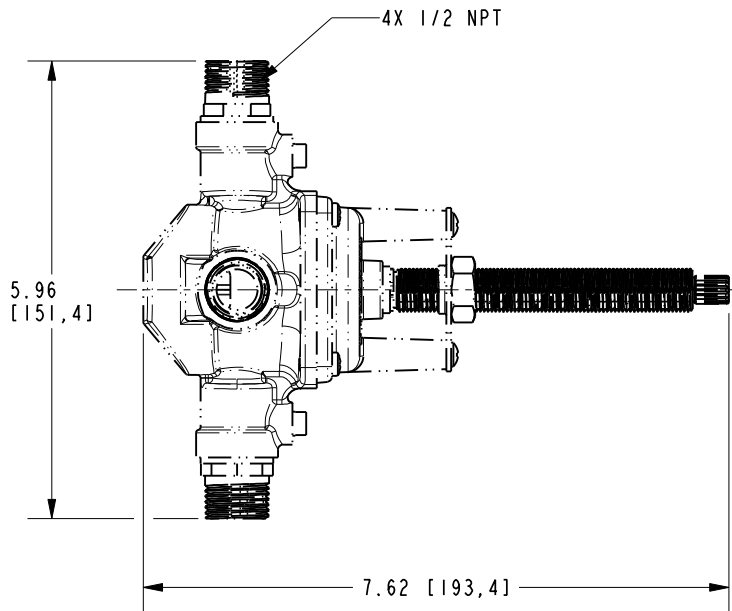
DWG NO. **5-2542BP** REV **C**

SCALE .500 REF. - SHEET | OF 3

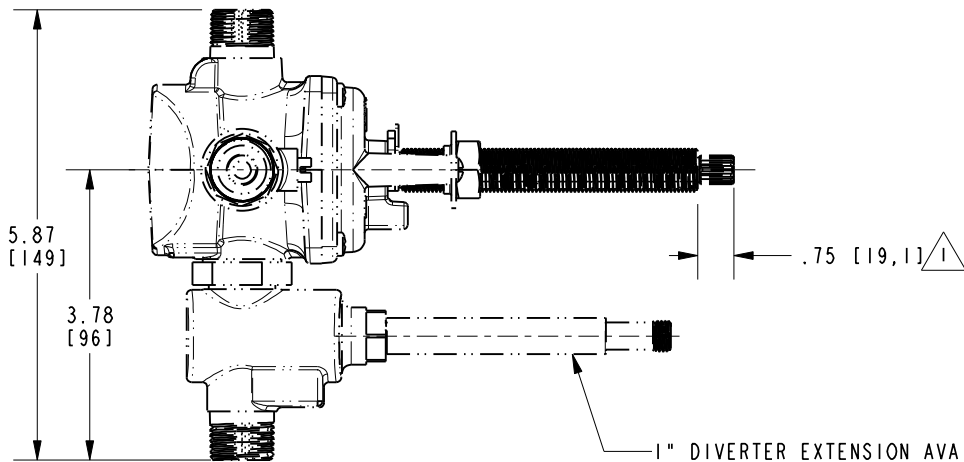
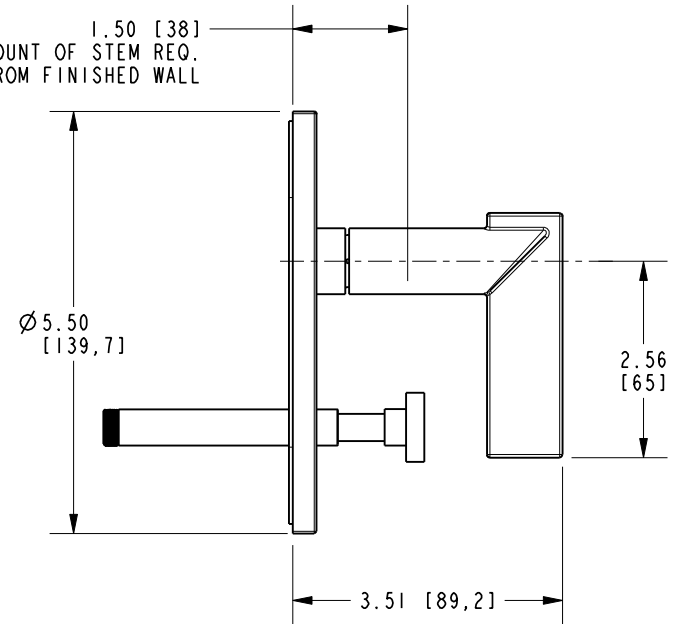


NOTES:

1. CUT ALL THREADS 0.75 SHORTER THAN STEM.



1.50 [38]  
AMOUNT OF STEM REQ.  
FROM FINISHED WALL



1" DIVERTER EXTENSION AVAILABLE

|                  |          |  |  |
|------------------|----------|--|--|
| <b>BRASSTECH</b> |          | 2001 E. CARNEGIE AVE.<br>SANTA ANA, CA 92705<br>(949) 417-5207 |  |
| DWG NO.          | 5-2542BP | REV C  |  |
| SCALE .400       | REF. -   | SHEET 3 OF 3   |  |