







5592TRM
Tub/Shower Trim
Specification Submittal

Location:

<p>Model Numbers</p> <p><input type="checkbox"/> 5592TRM Tub/Shower Trim</p> <p>Valve Options: -262 Series Temptrol® Shower Valve with TRM modifiers -162 Series Temptrol Shower Valve requires TC modifier</p>	<p>Options/Modifications</p> <p><input type="checkbox"/> 15 GG 1.5 gpm (5.7 L/min) flow restrictor</p> <p><input type="checkbox"/> L1 Less showerhead</p> <p><input type="checkbox"/> L4 Less head, arm, and flange</p> <p><input type="checkbox"/> L7 Less handle</p> <p><input type="checkbox"/> TC Test Cap Trim (includes TA-10™ & T-12A) <i>used with 162 Series Temptrol Shower Valve</i></p> <p><input type="checkbox"/> BBZ Brushed Bronze finish</p> <p><input type="checkbox"/> MB Matte Black finish</p> <p><input type="checkbox"/> STN Satin Nickel finish</p>
<p>Feature Highlights</p> <ul style="list-style-type: none"> • Elm Tub/Shower Trim. • Requires Temptrol® Pressure-Balancing Shower Valve. • Metal lever handle. • 5-5/8" square diverter tub spout. • 7-mode HydroMersion showerhead with Non-Positive Shutoff (NPSO). • Standard 2.0 gpm (7.6 L/min) flow restrictor. • Components shall be metal and nonmetal construction, plated in standard Polished Chrome finish. 	<p>Warranty</p> <p>Limited Lifetime - for residential installations.</p> <p>10 Years - for commercial/industrial installations.</p> <p>Refer to www.symmons.com/warranty for complete warranty information.</p> 
<p>Compliance</p> <ul style="list-style-type: none"> • ASME® A112.18.1/CSA® B125.1 • WaterSense® 1.5 gpm (5.7 L/min) 2.0 gpm (7.6 L/min) • Lever handle meets ADA requirements for operation   	

SKU Builder

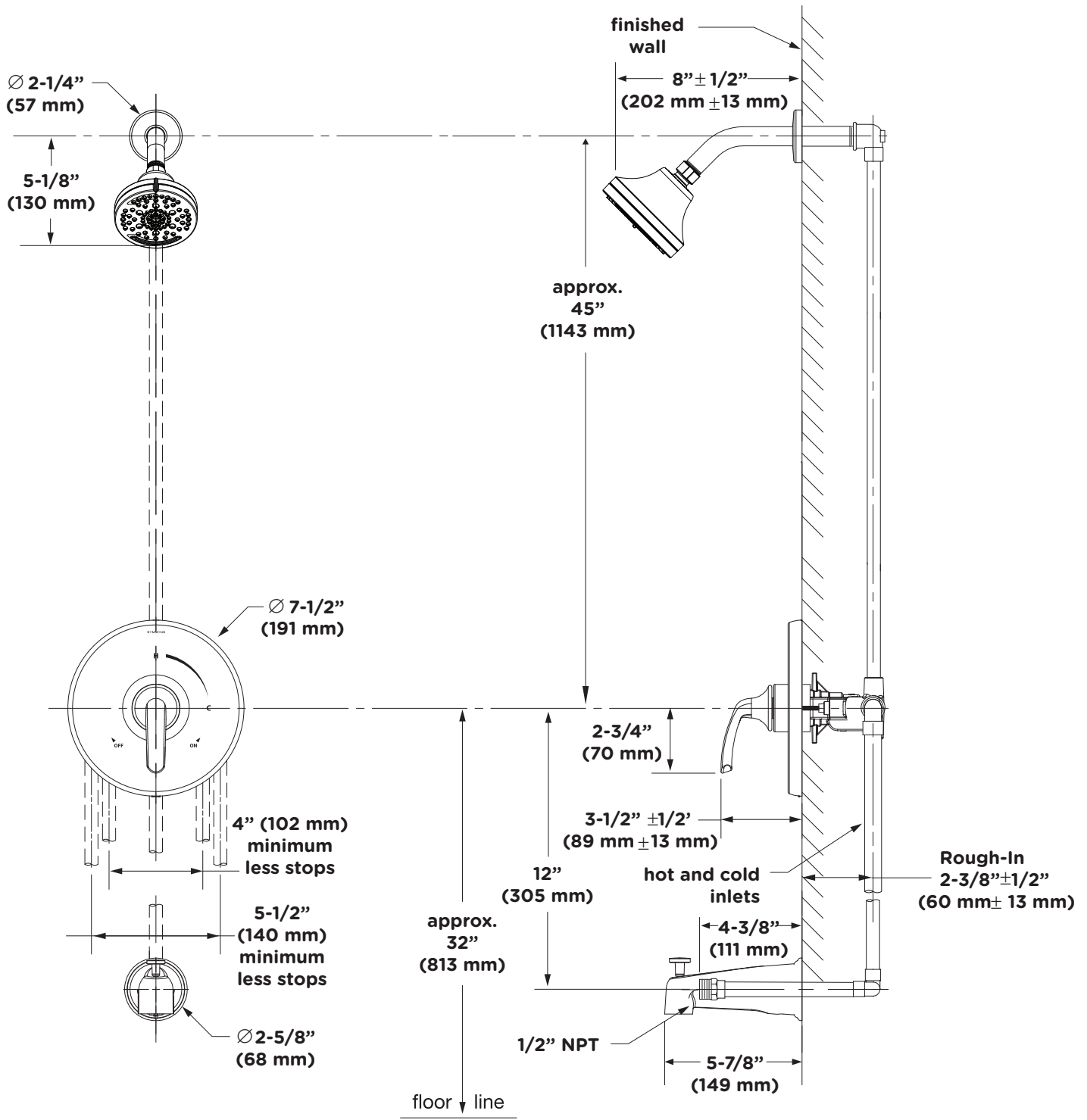
Series	Finish	Modifier	Flow Rate	TRM (required)	TC	Final SKU
5592	STN		15	TRM		5592STN15TRM
5592	MB	L1		TRM	TC	5592MBL1TRMTC

Notes: No more than two modifiers (L1-L7) permitted when ordering. Modifiers will list in numerical order.

Architectural/Engineering Specification

Symmons Elm Tub and Shower Trim _____ Includes Elm Tub/Shower Trim for Temptrol Pressure-Balancing Shower Valve. Features metal lever handle, 5-5/8" square diverter tub spout, 7-mode HydroMersion showerhead with NPSO, and standard 2.0 gpm (7.6 L/min) flow rate. Components shall be metal and nonmetal construction, plated in standard Polished Chrome finish. 10-Year Commercial Warranty. ASME A112.18.1/CSA B125.1, WaterSense 1.5 gpm (5.7 L/min) and 2.0 gpm (7.6 L/min) compliant. Lever handle meets ADA requirements for operation. Available options: 15 = 1.5 gpm (5.7 L/min) flow restrictor, L1 = Less showerhead, L4 = Less head, arm, and flange, L7 = Less handle, TC = Test Cap Trim, BBZ = Brushed Bronze finish, MB = Matte Black finish, and STN = Satin Nickel finish.

Dimensions



Notes:

- 1) Valve body and piping not included and shown as reference only.
- 2) Plaster shield (p/n T-176) for drywall, plaster, or other type walls $1/2\text{''}$ or greater.
- 3) All dimensions measured from nominal rough-in.
- 4) Dimensions subject to change without notice.