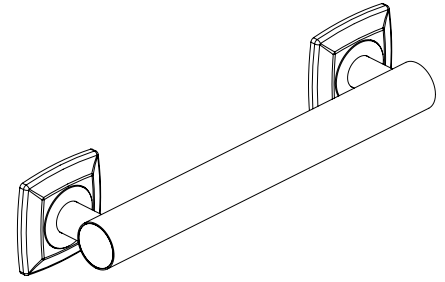



Location:



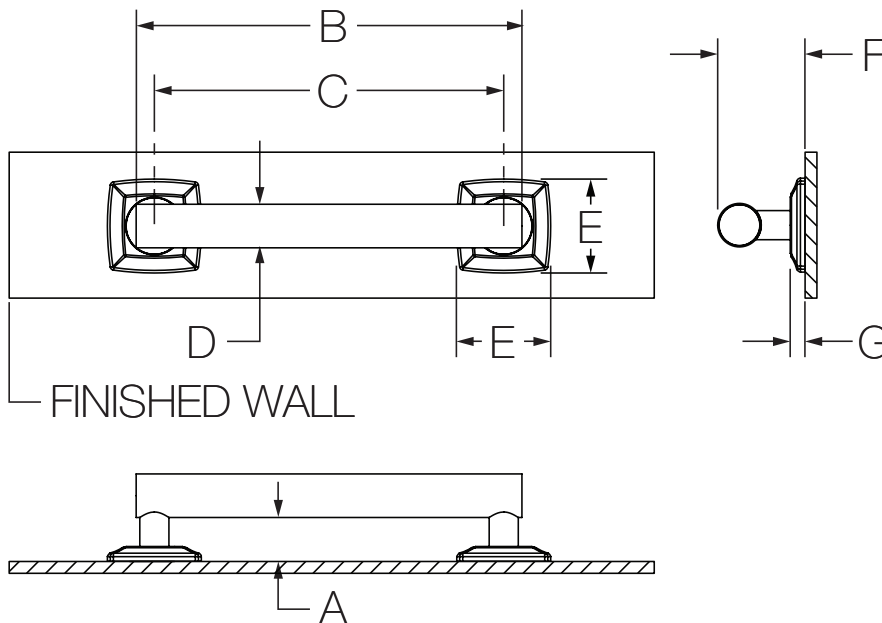
563GB24 (36)
 ADA Grab Bar Series
Specification Submittal

Model Numbers	Options/Modifications
<input type="checkbox"/> 563GB24 24" Grab Bar for ADA Applications <input type="checkbox"/> 563GB36 36" Grab Bar for ADA Applications	<input type="checkbox"/> STN Satin Nickel finish <input type="checkbox"/> MB Matte Black finish
Feature Highlights	Warranty
<ul style="list-style-type: none"> • Supports up to 250 lbs. • 1-1/2" bar diameter • 3" flange diameter • Bar extends 1-1/2" from wall • Concealed mounting for a clean look • Meets WW-P-541/8B Federal Specification for Manufacturing • Meets ADA load requirements when properly installed • Stainless steel construction 	<p>Limited Lifetime - to the original end purchaser in consumer/residential installations. 10 Years - for commercial/industrial installations. Refer to www.symmons.com/warranty for complete warranty information.</p> 

Architectural/Engineering Specification

Symmons ADA Grab Bar Series _____ Includes Supports up to 250 lbs, 1-1/2" bar diameter, 3" flange diameter, Bar extends 1-1/2" from wall, Concealed mounting for a clean look, Meets WW-P-541/8B Federal Specification for Manufacturing, Meets ADA load requirements when properly installed, Stainless steel construction. 10 Year Commercial Warranty. Available options: "STN - Satin Nickel finish", and "MB - Matte Black finish".

Dimensions



Measurements	
A	1-1/2", 38 mm
B	25-1/4", 641 mm (563GB-24) 37-1/4", 946 mm (563GB-36)
C	24", 610 mm (563GB-24) 36", 914 mm (563GB-36)
D	Ø 1-1/2", 38 mm
E	(2x) 3-1/4", 82 mm
F	3", 76 mm
G	1/2", 13 mm

Note:

1) Dimensions subject to change without notice.