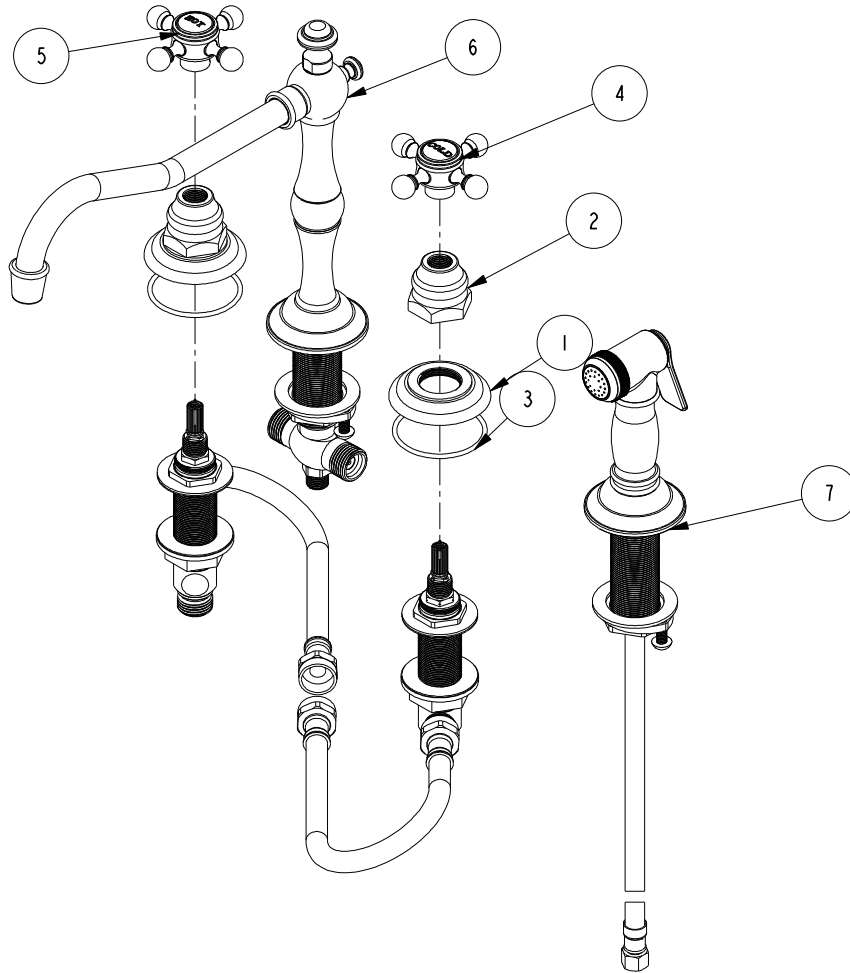


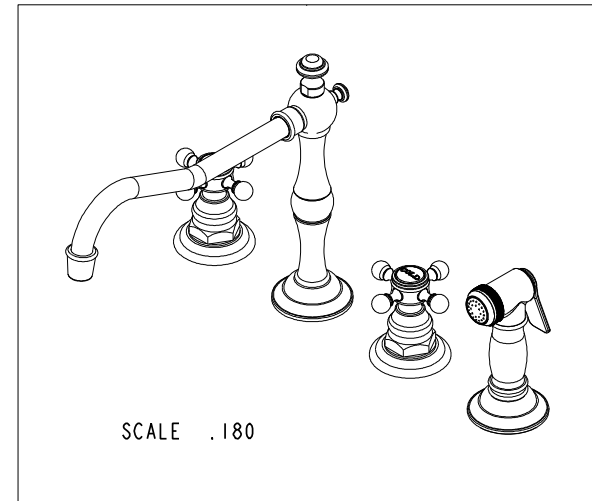
NOTES:

1. TO INSPECT ASSEMBLY, FOLLOW FIRST ARTICLE AND IN PROCESS INSPECTION SHEET.



BILL OF MATERIAL (CURRENT LEVEL)

ITEM	PT/ASSY	DESCRIPTION	TYPE	QTY.
1	10048	ESCUTCHEON W/S VALVE	PART	2
2	10523	HEX ESCUTCHEON BONNET	PART	2
3	91753	O-RING, # 2-136, EP, 50 DURO - GREY	PART	2
4	2-142	HANDLE ONLY, COLD	ASSEMBLY	1
5	2-141	HANDLE ONLY, HOT	ASSEMBLY	1
6	2-174	SPOUT ASM - 943	ASSEMBLY	1
7	129	KITCHEN SPRAY HEAD	ASSEMBLY	1
8	1-541	VALVE KIT - 943	ASSEMBLY	1



-	G	EN-4300gg	03/01/21	R.S.
-	F	EN-3722	02/08/19	C.G.
-	E	EN-3777	01/08/19	-
-	D	EN-2334	12/20/12	-
-	C	EO-0449	11/11/04	-
-	B	EO-0443	11/02/04	-
ZONE	REV	DESCRIPTION	DATE	APPROVED

COPYRIGHT 2005 BRASSTECH, INC. THESE DRAWINGS AND THE DESIGNS DEPICTED HEREIN ARE THE PROPRIETARY PROPERTY OF BRASSTECH. ANY USE OR REPRODUCTION IS SUBJECT TO THE EXPRESS APPROVAL OF BRASSTECH. UNAUTHORIZED USE IS STRICTLY PROHIBITED. ALL RIGHTS RESERVED.

TESTING	-	-	-
ASSEMBLY	-	-	-
PLATING	-	-	-
POLISHING	-	NEXT ASSY	USED ON
MACHINING	-	APPLICATION	
TOOLING FIXTURE #	REMOVE ALL BURRS AND SHARP EDGES		

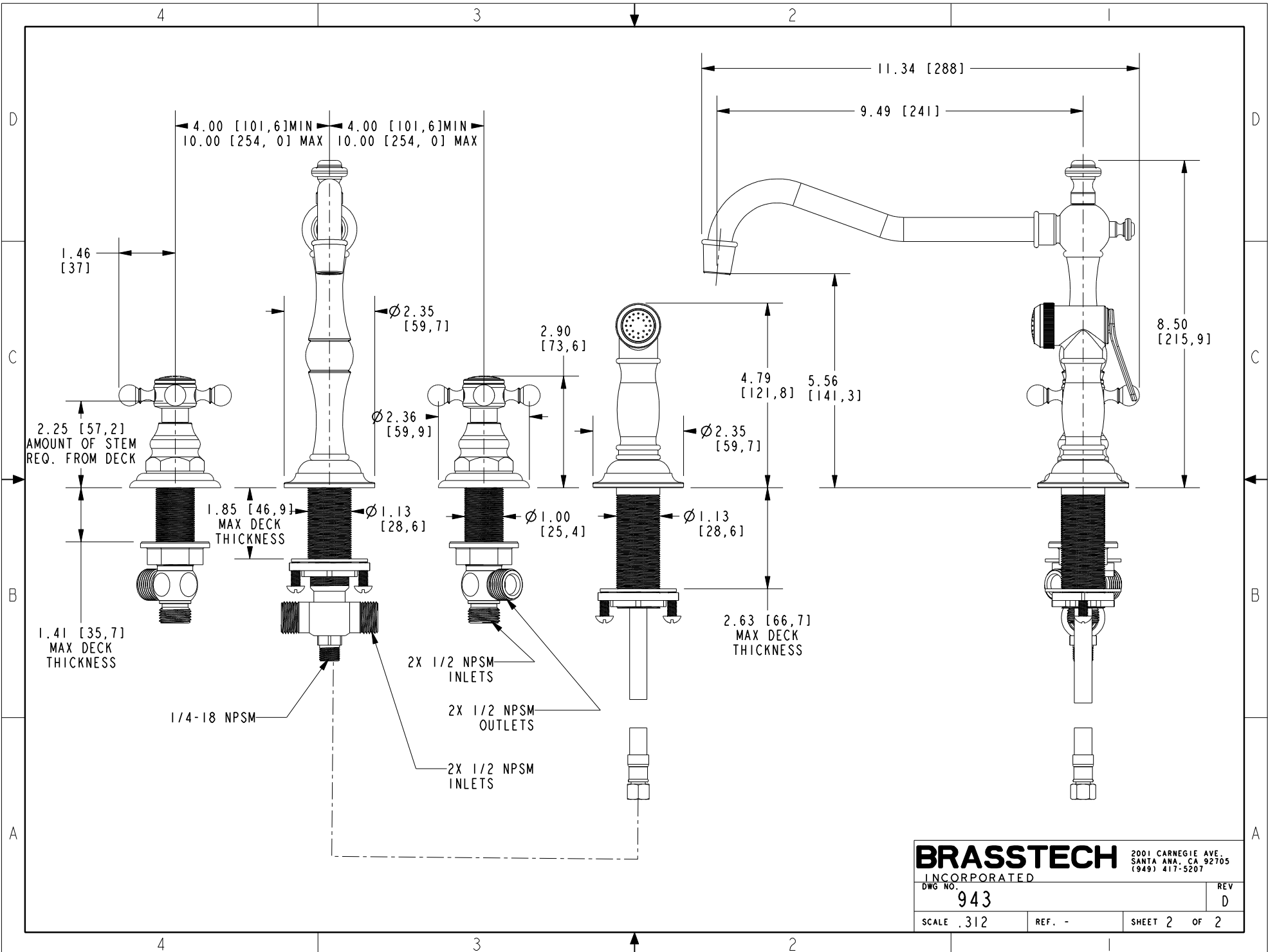
UNITS ARE: INCHES [MM]			
TOLERANCES ARE:			
FRACTIONS	DECIMALS	ANGLES	
±1/16"	.X ±.1 [2.5]	±1°	
	.XX ±.06 [1.5]		
(X.XXX) DENOTES CRITICAL DIMS. ALL THREADS ARE CRITICAL			
DRAWN	MANJUNATH	02/08/19	
CHECKED	C.G.	02/08/19	
APPROVED	C.G.	02/08/19	

BRASSTECH 2001 CARNEGIE AVE. SANTA ANA, CA 92705 (949) 417-5207
INCORPORATED

KITCHEN FAUCET WITH SPRAY

DWG NO. **943** REV **G**

SCALE .225 REF. - SHEET 1 OF 2



BRASSTECH
 INCORPORATED
 2001 CARNEGIE AVE.
 SANTA ANA, CA 92705
 (949) 417-5207

DWG NO.	943	REV	D
SCALE	.312	REF.	-
SHEET 2		OF 2	