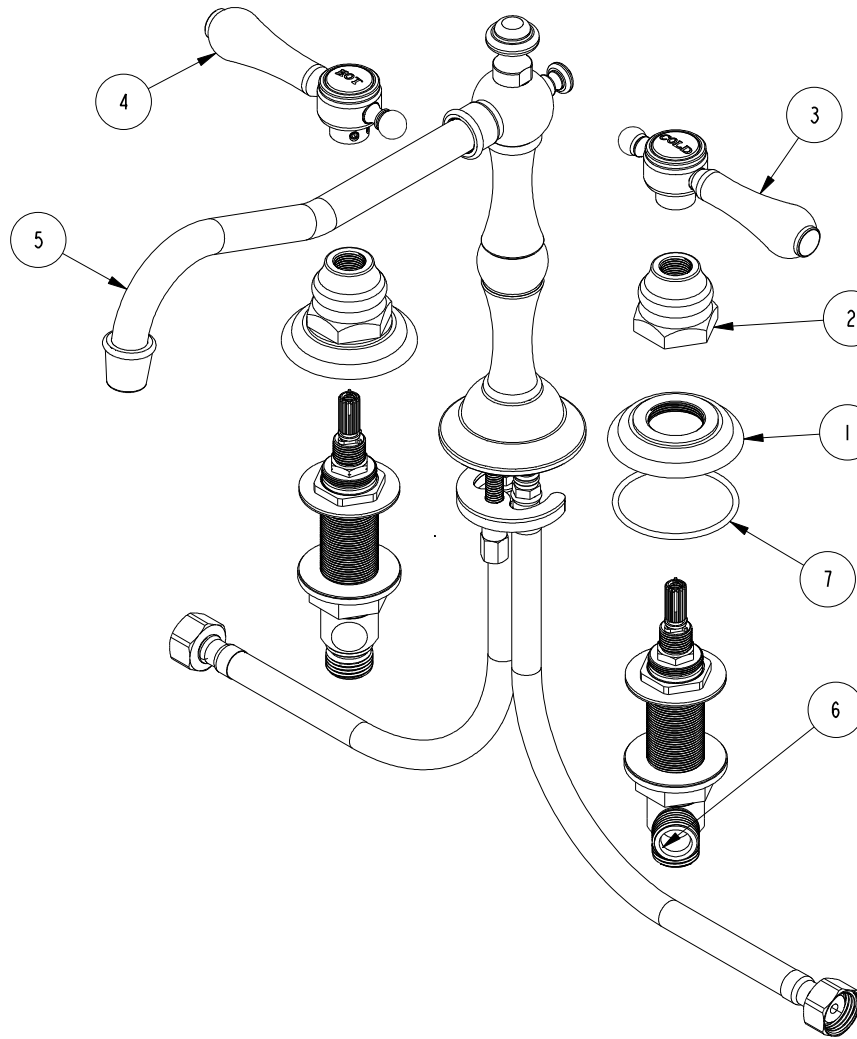


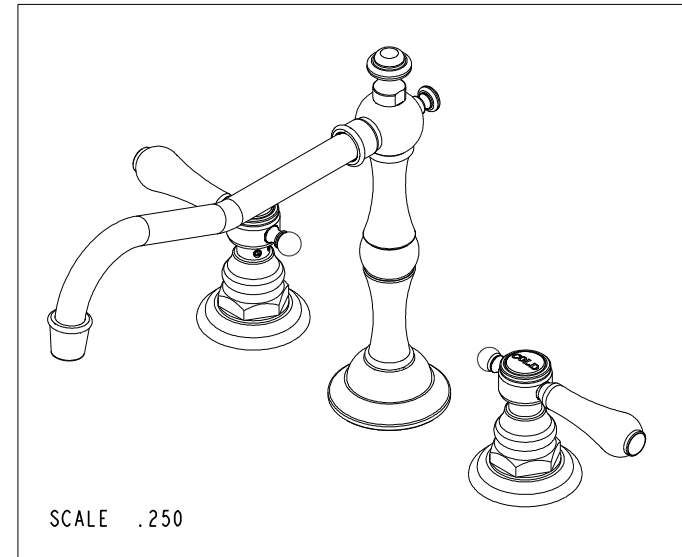
NOTES:

1. TO INSPECT ASSEMBLY, FOLLOW FIRST ARTICLE AND IN PROCESS INSPECTION SHEET.



BILL OF MATERIAL (CURRENT LEVEL)

ITEM	PT/ASSY	DESCRIPTION	TYPE	QTY.
1	10048	ESCUTCHEON W/S VALVE	PART	2
2	10523	HEX ESCUTCHEON BONNET	PART	2
3	2-133	HANDLE ASSEMBLY - COLD	ASSEMBLY	1
4	2-134	HANDLE ASSEMBLY - HOT	ASSEMBLY	1
5	2-614	942 KITCHEN SPOUT	ASSEMBLY	1
6	1-525	W/S VALVE ASM	ASSEMBLY	1
7	91753	O-RING, # 2-136, EP, 50 DURO - GREY	PART	2



TESTING	-	-	-
ASSEMBLY	-	-	-
PLATING	-	-	-
POLISHING	-	NEXT ASSY	USED ON
MACHINING	-	APPLICATION	
TOOLING FIXTURE #	REMOVE ALL BURRS AND SHARP EDGES		

UNITS ARE: INCHES [MM]
 TOLERANCES ARE:
 FRACTIONS DECIMALS ANGLES
 ±1/16" .X ±.1 [2.5] ±°
 .XX ±.06 [1.5]

(X.XXX) DENOTES CRITICAL DIMS.
 ALL THREADS ARE CRITICAL

DRAWN	MANJUNATH	02/08/19
CHECKED	C.G.	02/08/19
APPROVED	C.G.	02/08/19

BRASSTECH
 INCORPORATED

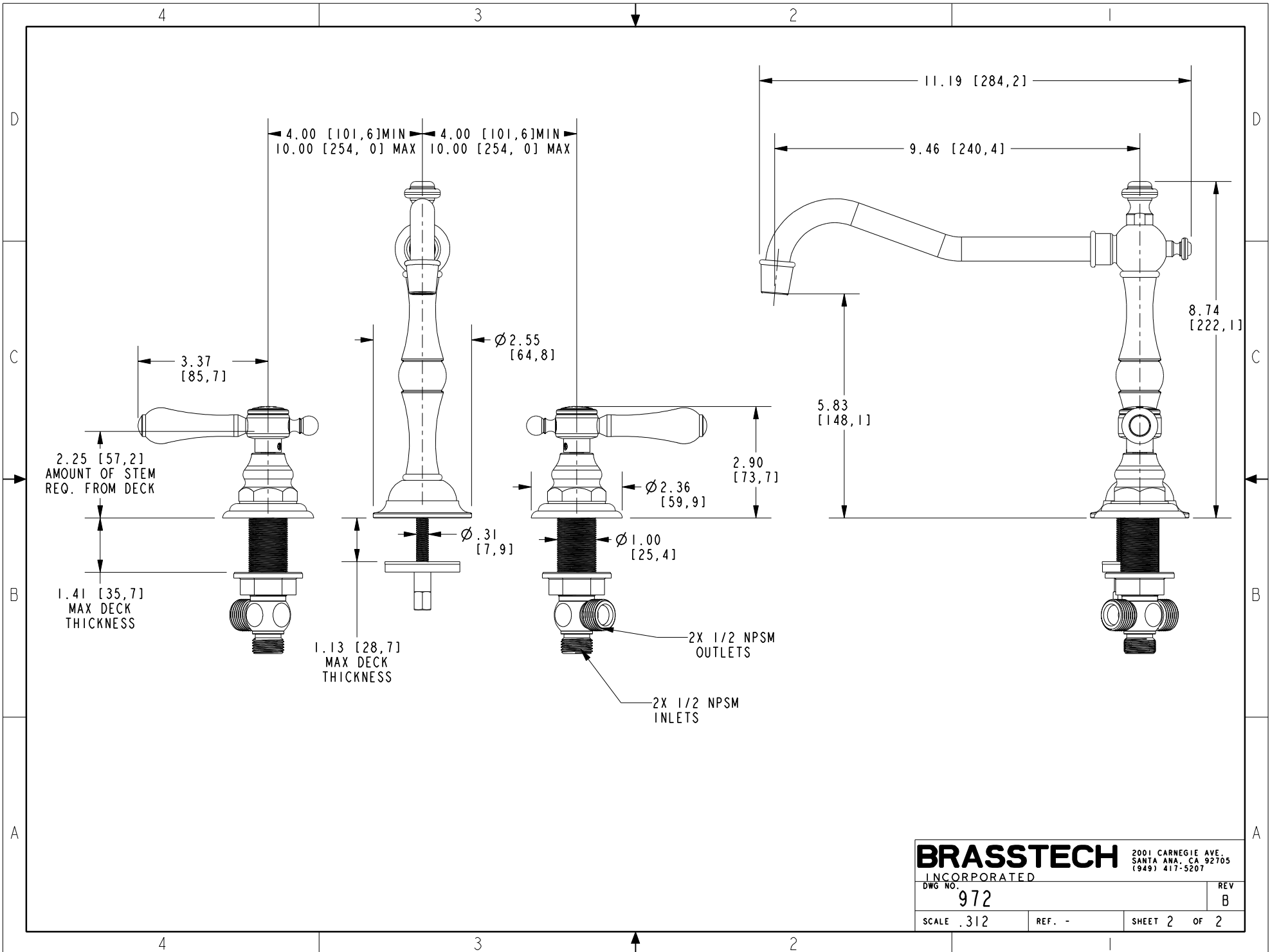
2001 CARNEGIE AVE.
 SANTA ANA, CA 92705
 (949) 417-5207

KITCHEN FAUCET

-	B	EN-4300gg	03/02/21	R.S.
-	A	EN-3722	02/08/19	C.G.
-	-	EN-3426	10/16/17	AN
ZONE	REV	DESCRIPTION	DATE	APPROVED

COPYRIGHT 2005 BRASSTECH, INC.
 THESE DRAWINGS AND THE DESIGNS
 DEPICTED HEREIN ARE THE PROPRIETARY
 PROPERTY OF BRASSTECH. ANY USE
 OR REPRODUCTION IS SUBJECT TO
 THE EXPRESS APPROVAL OF BRASSTECH.
 UNAUTHORIZED USE IS STRICTLY
 PROHIBITED. ALL RIGHTS RESERVED.

DWG NO.	972	REV	B
SCALE	.300	REF.	-
SHEET	1	OF	2



BRASSTECH INCORPORATED
 2001 CARNEGIE AVE.
 SANTA ANA, CA 92705
 (949) 417-5207

DWG NO. 972	REV B
SCALE .312	REF. -
SHEET 2 OF 2	