

**SPECIFICATIONS**

**TRADITIONAL  
PULLS**



**FEATURES**

- Traditional styling
- Multiple finishes
- Concealed installation

**WARRANTY**

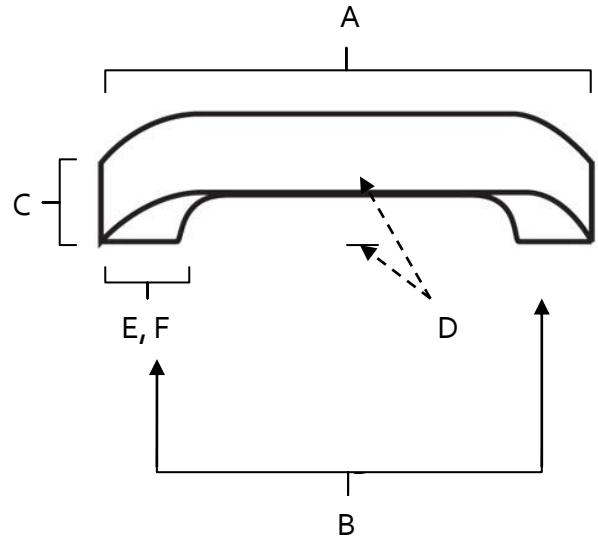
Limited lifetime

**FINISHES**

- Polished Brass (PB)
- Polished Chrome (PC)
- Antique Pewter (AP)
- Barcelona (BARC)
- Bronze (BRZ)
- Chocolate Bronze (CHBRZ)
- Matte Black (MB)
- Polished Antique (PA)
- Polished Nickel (PN)
- Satin Nickel (SN)

**MATERIAL**

Brass



| Item#   | A      | B      | C     | D    | E (L) | F (W) |
|---------|--------|--------|-------|------|-------|-------|
| A701-3  | 3 1/2" | 3"     | 7/16" | 3/4" | 1/2"  | 7/16" |
| A701-35 | 4 1/2" | 3 3/4" | 1/2"  | 7/8" | 1/2"  | 1/2"  |

**KEY:**

- A - Overall Length
- B - Center to Center
- C - Handle Width
- D - Projection
- E - Mount Length
- F - Mount Width

NOTE: Dimensions and specifications are subject to change without notice.