

**PORTIA  
67" ACRYLIC  
OVAL TUB**

Cat. No.  
ATOVN67IG-WH



L: 67", 42-3/4" bottom  
W: 38", 22-3/4" bottom  
H: 23-3/4"

Water depth: 18-1/4" to top of tub  
Water depth: 15" to OF  
Overflow slot length: 4"  
Center drain to back of rim: 18-1/2"  
Bottom of drain to floor: 3-1/8"  
Bathing well to floor: 4-3/4"  
Sitting area: 17"  
Base Height: 3"

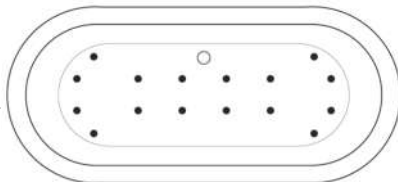
The following is recommended for  
ATOVN67IG tubs:

- Faucets: part #4602 and #7082
  - Double offset supplies: part #5576
  - Rigid, free standing supplies: part #4502
  - Freestanding filler: #7932, 7952, or 7918
- (Supplies included with filler)



For easier installation we  
recommend use of 5598-ITD  
Easy Install Rough In Kit

Gallon Capacity with OF: 66  
Shipping Weight: 154 lbs.  
Empty Weight: 91 lbs.  
Filled Weight with OF: 639 lbs.



(Air jet configuration if system is added,  
more info on page 2.)

**Features:**

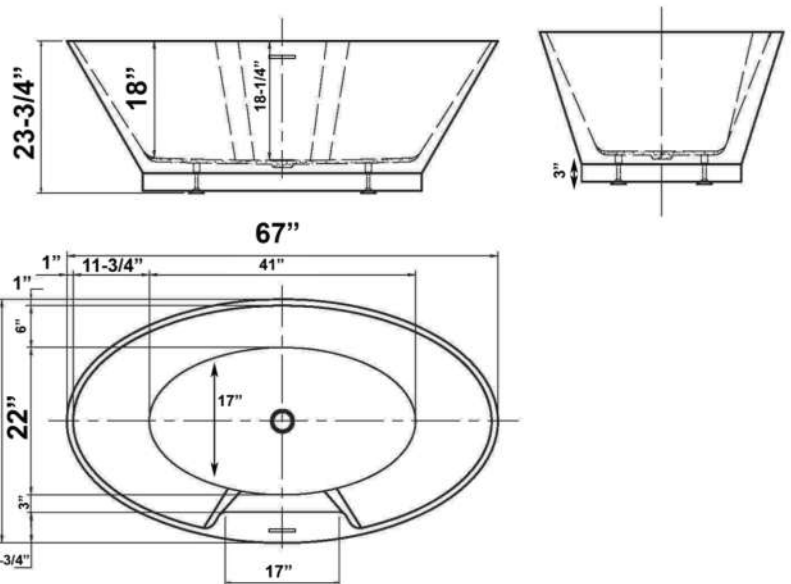
- ▶ Interior and exterior walls acrylic sheets
- ▶ Drain and overflow covers included (available in 6 finishes)
- ▶ Overflow slot with integrated drain
- ▶ Drain included
- ▶ Tub base included
- ▶ Rim measurement: 1-1/4"
- ▶ Includes built-in adjusters
- ▶ No faucet holes with Tap deck
- ▶ Angle slope of tub: 59°
- ▶ Tub is thoroughly inspected before shipment
- ▶ Option to add foam insulation between tub walls available
- ▶ **New:** Air jet system now available, more info on page 2



**Finishes:**

- BN** Brushed Nickel
- CP** Polished Chrome
- ORB** Oil Rubbed Bronze
- PB** Polished Brass
- PN** Polished Nickel
- WT** White

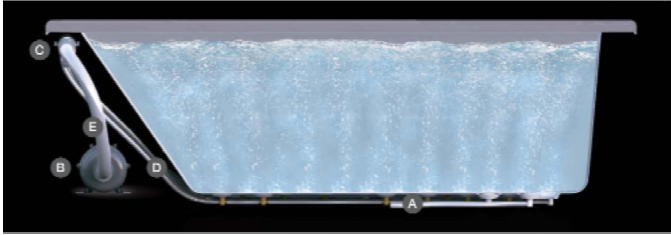
**Custom Colors Available** (inside of tub is always white enamel):  
Painted bathtubs are considered "special order" and are not returnable  
\$160 Bisque or Black \$250 Designer Color



Dimensions of fixture are nominal and specifications subject to change without notice.

# BATHTUB AIR JET KIT

Cat. No.  
AIR KIT 1, AIR KIT 2



- A** AIR JET - Bottom air jets for maximum bubble action.
- B** BLOWER - The heart of the massage system.
- C** MANIFOLD - Double back flow security prevention device.
- D** FLEXIBLE PVC HOISING - IAPMO certified.
- E** MAIN AIR INTAKE HOSE - High temperature and pressure resistant.

## Features:

- ▶ 750 Watt blower motor operates system
- ▶ 300 Watt air heater warms air
- ▶ System powered by 120V
- ▶ 16 brass air jets placed in bottom of tub
- ▶ Each air jet has 24 holes
- ▶ Air jet caps available in white (AIR KIT 1) or black (AIR KIT 2)
- ▶ Includes 1 1/4" x 3' main air hose plus 1 1/4" x 9' extension hose
- ▶ Automatic system purge after each use
- ▶ Automatic safety timer turns off system after 20 minutes
- ▶ Includes water tight remote control
- ▶ Compatible with most acrylic, copper and resin tubs with no feet
- ▶ Not available with cast iron tubs or tubs with feet

**Air Kit is installed in tub before shipment**

## INSIDE TUB VIEW - WILL VARY BY TUB DESIGN

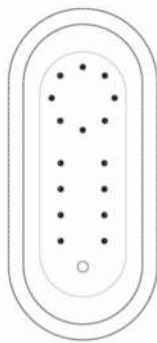


Air Jet

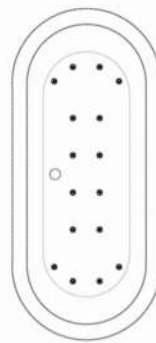


Remote

**Oval bathtub**  
Sample jet configuration

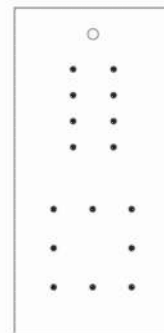


with end drain

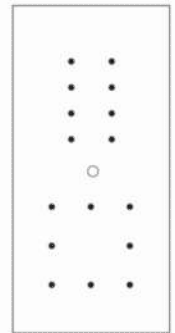


with center drain

**Rectangular bathtub**  
Sample jet configuration

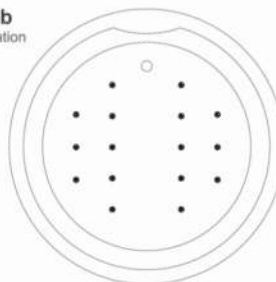


with end drain



with center drain

**Round bathtub**  
Sample jet configuration



These diagrams are general representations.  
Jet placement may vary dependent on tub shape

### Features:

(16) Maxi Air Jets



Elbows for air jets



Tees for air jets