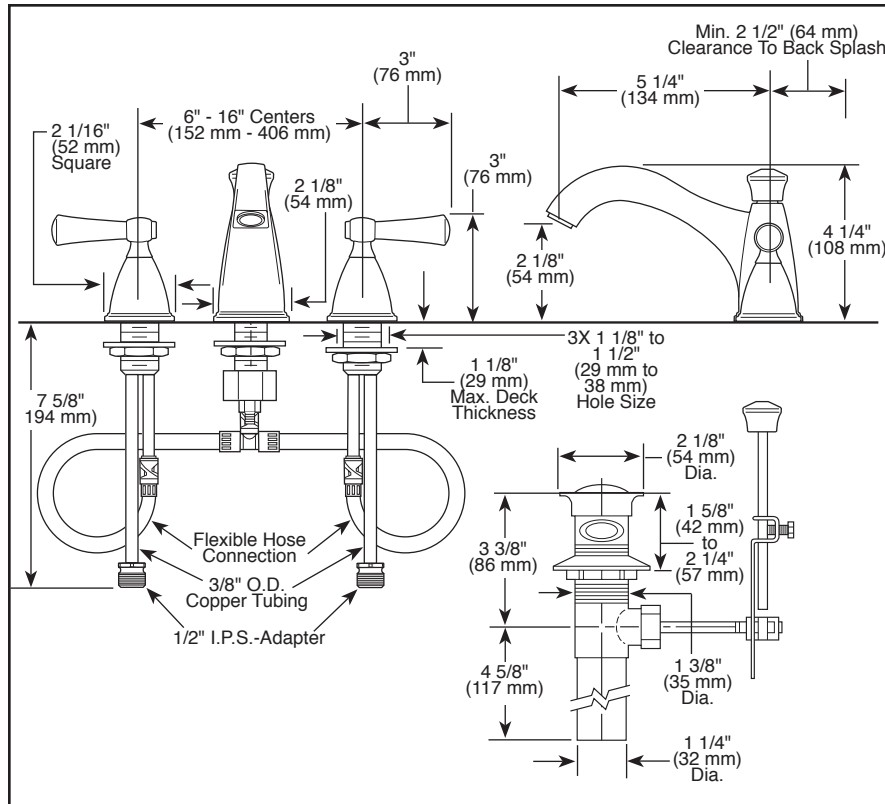


65340LF-▲
65340LF-▲-ECO



Submitted Model No.: _____

Specific Features: _____



▲ Designate proper finish suffix

BRIZO®

LAVATORY FAUCET

- Vesi® Collection
- Two Handle Widespread Deck Mount

FEATURES:

- Quick-Snap® Installation

STANDARD SPECIFICATIONS:

- Max flow rate: 1.50 GPM @ 60 PSI, 5.68 L/Min @ 414 kPa
- Max flow rate (ECO models only): 1.20 GPM @ 60 PSI, 4.54 L/Min @ 414 kPa
- Three hole mount
- Ceramic cartridge
- 1/4 turn stops may be removed for 180° rotation
- Hot and cold stems are interchangeable
- Quick connect hoses and self-locating bases
- Includes metal drain with pop-up type fitting with plated flange and stopper
- Standard mounting deck thickness can be extended 1" (25 mm) with RP10612
- Solid brass fabricated end valves and spout body

WARRANTY:

- Lifetime limited warranty on parts (other than electronic parts and batteries) and finishes: or, for commercial users, for 5 years from date of purchase.
- 5 year limited warranty on electronic parts (other than batteries); or, for commercial users, for 1 year from the date of purchase. No warranty is provided on batteries.



COMPLIES WITH:

- ASME A112.18.1 / CSA B125.1
- ASME A112.18.2 / CSA B125.2
- Indicates compliance to ICC/ANSI A117.1
- EPA WaterSense®
- Verified compliant with 0.25% weighted average Pb content regulations