

California Faucets®

Corsano™

PREP KITCHEN FAUCET

Features

- Over 28 finishes including 13 PVD finishes
- All brass construction
- 360° rotating spout
- Magnetic docking secures sprayhead into spout
- One button brass sprayhead has dual function aerated or spray mode
- Spray jets have easy-to-clean surface that withstands mineral build-up
- Quiet polymer-braided hose with rotating joint at sprayhead allows for smooth and non-binding use
- Ceramic disc cartridge
- 1.8 gpm (6.8 L/min) max flow rate

Codes/Standards Applicable

- Meets or exceeds the following:
- ASME A112.18.1/CSA B125.1
 - NSF 61 and NSF 372
 - CEC / DOE
 - Commonwealth of MA
 - ADA Compliant



CF-K51-101-XX

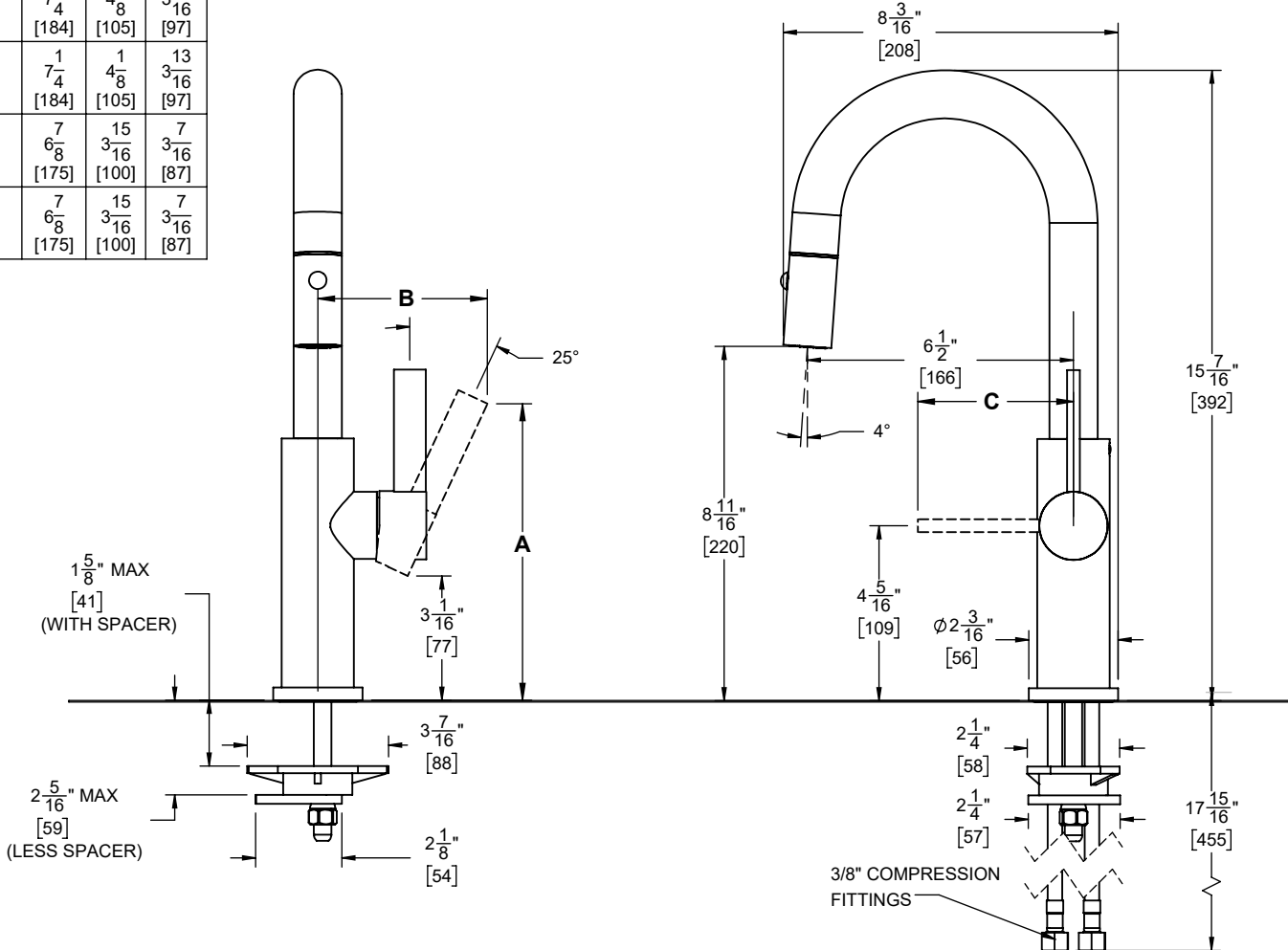


CF-K51-101-FB shown

XX = DENOTES HANDLE STYLE

DIMENSIONS (in.)			
XX HANDLE	A	B	C
FB	1 7/4 [184]	1 4/8 [105]	13 3/16 [97]
BFB	1 7/4 [184]	1 4/8 [105]	13 3/16 [97]
ST	7 6/8 [175]	3 15/16 [100]	7 3/16 [87]
BST	7 6/8 [175]	3 15/16 [100]	7 3/16 [87]

THROUGH-HOLE SPECIFICATIONS		
MIN	RECOMENDED	MAX
Ø 1-1/4" [32]	Ø 1-3/8" [35]	Ø 1-3/8" [35]



SPECIFICATIONS SUBJECT TO CHANGE WITHOUT NOTICE

ALL DIMENSIONS SHOWN TO NEAREST 1/16"
[ALL DIMENSIONS SHOWN TO NEAREST 1MM]