

MX QSI-3637-BF 0.625 in. RRF AcryIX Alcove Three-Piece Shower

Model number:

106546-000-002-001

Dimensions: 42.25" x 38.5" x 77.625"

Installation: Alcove

Material: AcryIX™ Applied Acrylic



Standard Features:

- 3-piece transfer shower with return receiver flanges (RRF)
- AcryIX™ high gloss finish and ArmorCore™ resin-based reinforcement, for a stronger product with a limited lifetime residential warranty
- ADA/ANSI code compliant unit
- Remodeling sectional
- Standard accessories factory installed: stainless steel curtain rod and grab bars, white fold-up seat and recessed soap dish
- To learn more about the QSI program, download our brochure

Product characteristics:

- Made in North America
- ADA
- Quick Ship Inventory Program

Standard Colors:



White (002)

Certifications

MAAX products adhere to one or more of the following certifications:



MAAX

MX QSI-3637-BF 0.625 in. RRF AcryIX Alcove Three-Piece Shower

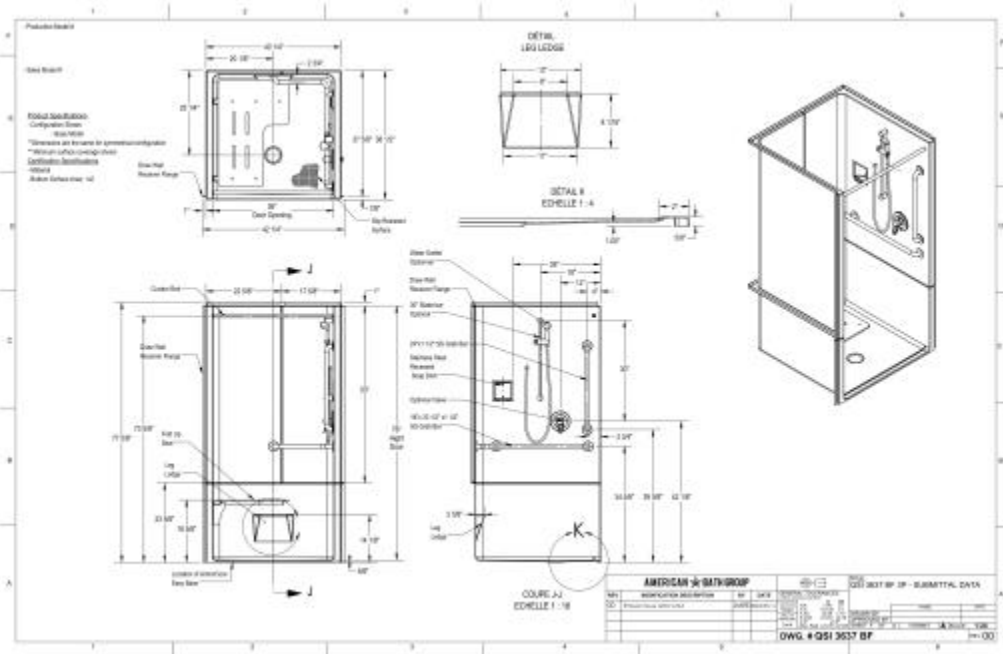
Model number:

106546-000-002-001

Dimensions: 42.25" x 38.5" x 77.625"

Installation: Alcove

Material: AcryIX™ Applied Acrylic



Dimensions

42 1/4 x 38 1/2 x 77 3/4 In.
(1073 x 978 x 1972 mm)

Shape

Rectangular

Pieces

3

Drain location:

Left valve wall / Right seat

Right valve wall / Left seat

Project:

Contractor:

Representative:

Date:

Tel:

Notes:

MAAX