

MX QSI-3838-BF 0.5 in. AcrylX Alcove Shower Base

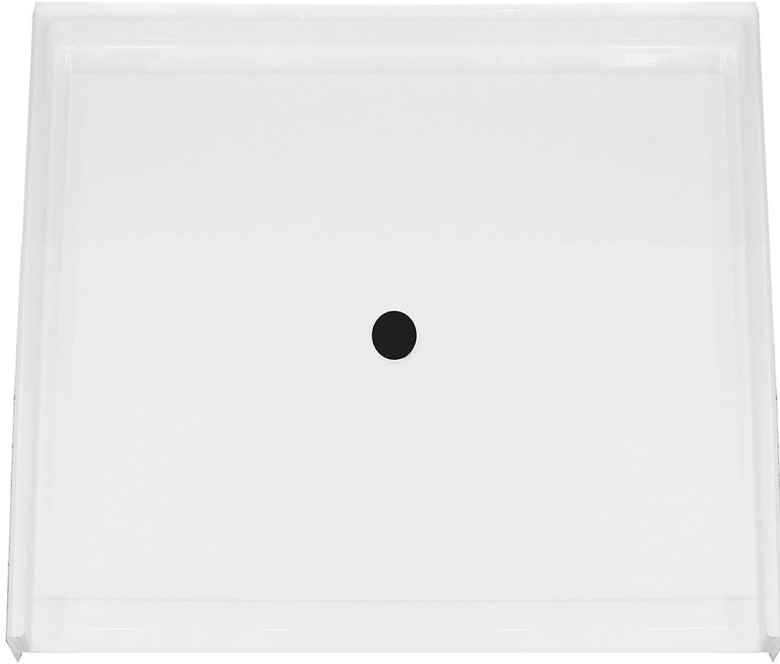
Model number:

106553-000-002-000

Dimensions: 38.625" x 38.5" x 4.5"

Installation:

Material: AcrylX™ Applied Acrylic



Standard Features:

- ADA/ANSI compliant base
- AcrylX™ high gloss finish and ArmorCore™ resin-based reinforcement, for a stronger product with a limited lifetime residential warranty
- 0.5 inch threshold
- Alcove installation
- Center drain
- To learn more about the QSI program, download our brochure

Product characteristics:

- Made in North America
- Aging in Place
- Quick Ship Inventory Program

Standard Colors:



White (002)

Certifications

MAAX products adhere to one or more of the following certifications:



Recommended products (Visit our website for a complete list of our recommended products)

No	Description
<input type="checkbox"/> 136451	Kleara 2-panel 36 ½-39 ½ x 69 in. 6mm Pivot Shower Door for Alcove Installation

MAAX

MX QSI-3838-BF 0.5 in. AcrylX Alcove Shower Base

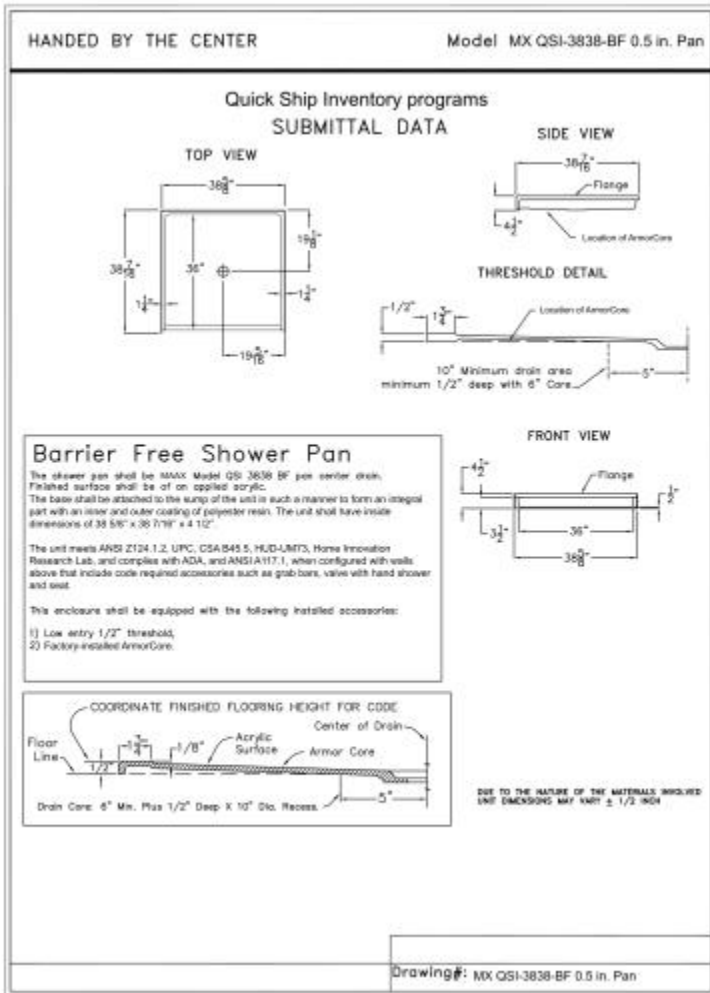
Model number:

106553-000-002-000

Dimensions: 38.625" x 38.5" x 4.5"

Installation:

Material: AcrylX™ Applied Acrylic



Dimensions

38 3/4 x 38 1/2 x 4 1/2 In.
(981 x 978 x 114 mm)

Shape

Square

Drain location:

Center

Project:

Contractor:

Representative:

Date:

Tel:

Notes:

MAAX