

B3Round 6042 Acrylic Configurable Shower Base

Model number:

410036-543-001-000

Dimensions: 59.875" x 41.875" x 4"

Installation:

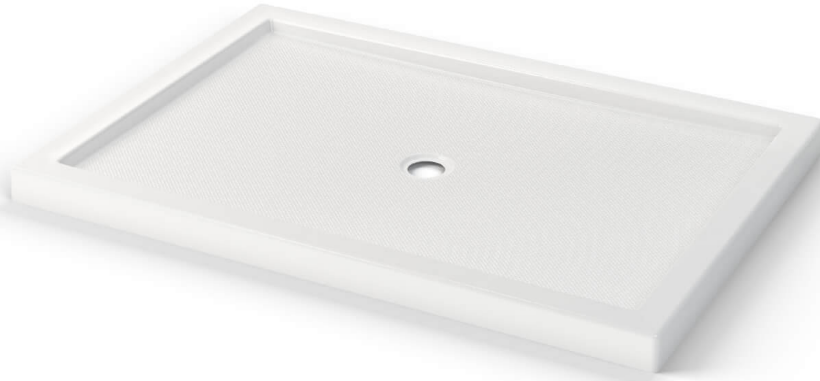
Material: Acrylic

Standard Features:

- Acrylic rectangular shower base with square drain
- 3 in. threshold and smooth floor
- Available with Stabili-T anti-slip bottom meeting ADA, ANSI or CSA requirements
- Center drain
- Drain not included

Product characteristics:

- Made in North America
- Low Threshold
- Easy Installation



Standard Colors:



White (001)

Certifications

MAAX products adhere to one or more of the following certifications:



Recommended products (Visit our website for a complete list of our recommended products)

No	Description
<input type="checkbox"/> 138997	Halo 56 ½-59 x 78 ¾ in. 8mm Sliding Shower Door for Alcove Installation
<input type="checkbox"/> 139394	Halo Return Panel for 42 in. Base

MAAX

B3Round 6042 Acrylic Configurable Shower Base

Model number:

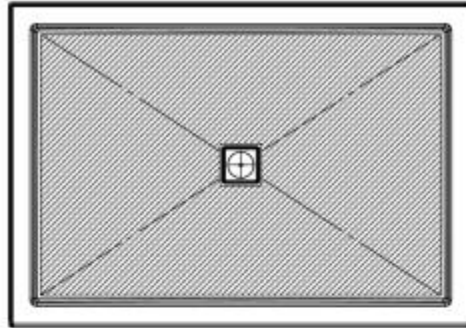
410036-543-001-000

Dimensions: 59.875" x 41.875" x 4"

Installation:

Material: Acrylic

The hatched area represent the antislip surface



Dimensions

60 x 42 x 4 In.
(1521 x 1064 x 102 mm)

Weight

59 lbs - 26 3/4 kg

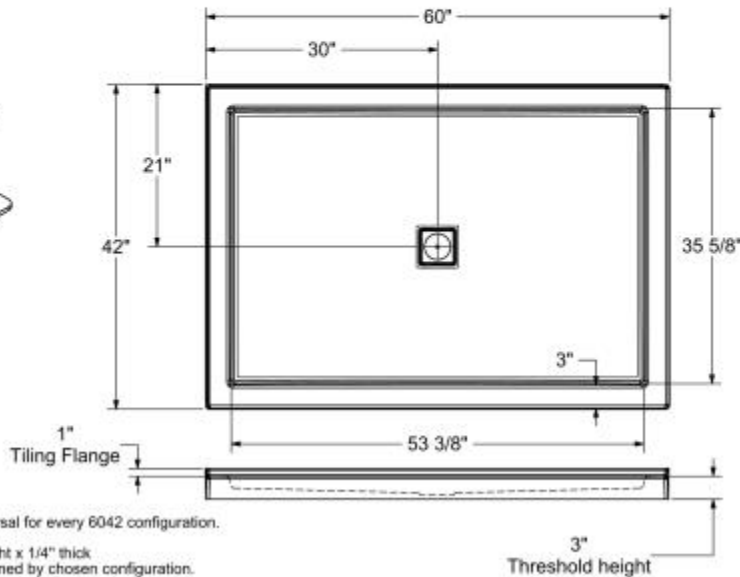
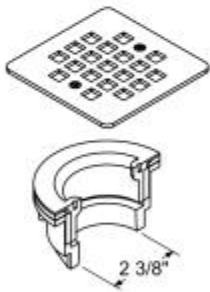
Shape

Rectangular

Drain location:

Center

DRAIN INCLUDED ON B3 SQUARE ONLY



This technical drawing is universal for every 6042 configuration.

Integrated tiling flange : 1" height x 1/4" thick
Tiling flange position is determined by chosen configuration.

All dimensions are approximate. Structure measurements must be verified against the unit to ensure proper fit.

Project:

Contractor:

Representative:

Date:

Tel:

Notes:

MAAX