

Allia TSR-6032 Acrylic Alcove Three-Piece Tub Shower

Model number:

Dimensions: 60" x 32.5" x 85"

Installation: Alcove

Material: Acrylic



Standard Features:

- 3-Piece construction for easy installation and maintenance
- Available in left-hand and right-hand drain configurations to fit your specific bathroom layout
- Textured bottom for added safety
- Standard not-AFR (above-the-floor rough)
- Built-in shelves provide generous storage space, making it easy to keep bathing essentials organized
- Includes a 12 in. white grab bar

Product characteristics:

- Bestseller
- Multi-Piece Unit
- Easy Installation

Systems:

Whirlpool
Combined Whirlpool/Aeroeffect
Aeroeffect

Code Compliant:

CSA

Standard Colors:



White

Certifications

MAAX products adhere to one or more of the following certifications:



MAAX

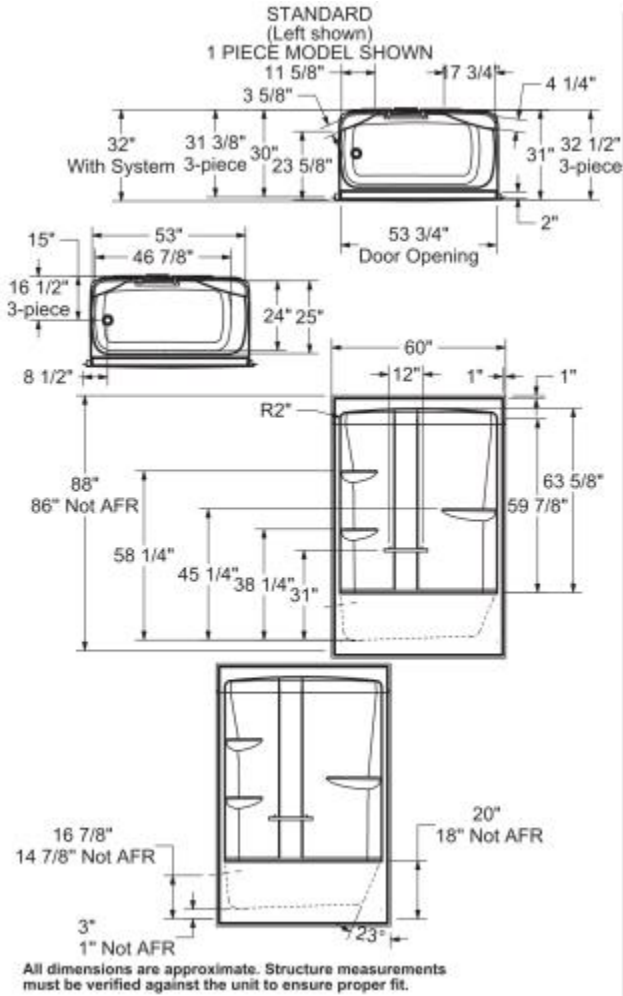
Allia TSR-6032 Acrylic Alcove Three-Piece Tub Shower

Model number:

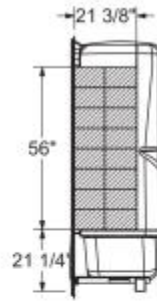
Dimensions: 60" x 32.5" x 85"

Installation: Alcove

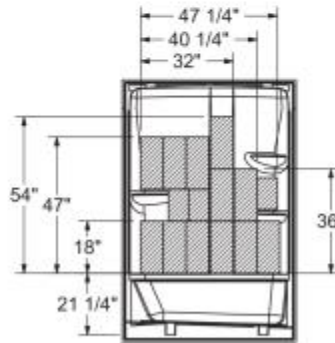
Material: Acrylic



OPTIONAL REINFORCEMENT (Left shown)



OPTIONAL REINFORCEMENT (Back Wall)



Dimensions

60 x 32 1/2 x 85 In.
(1524 x 826 x 2159 mm)

Water Capacity

54.8 gallons - 207 1/4 liters

Weight

166.86 lbs - 76 kg

Deep Sump Height

16.375 In. - 416 mm

Drain location:

Left

Right

Project:

Contractor:

Representative:

Date:

Tel:

Notes:

MAAX